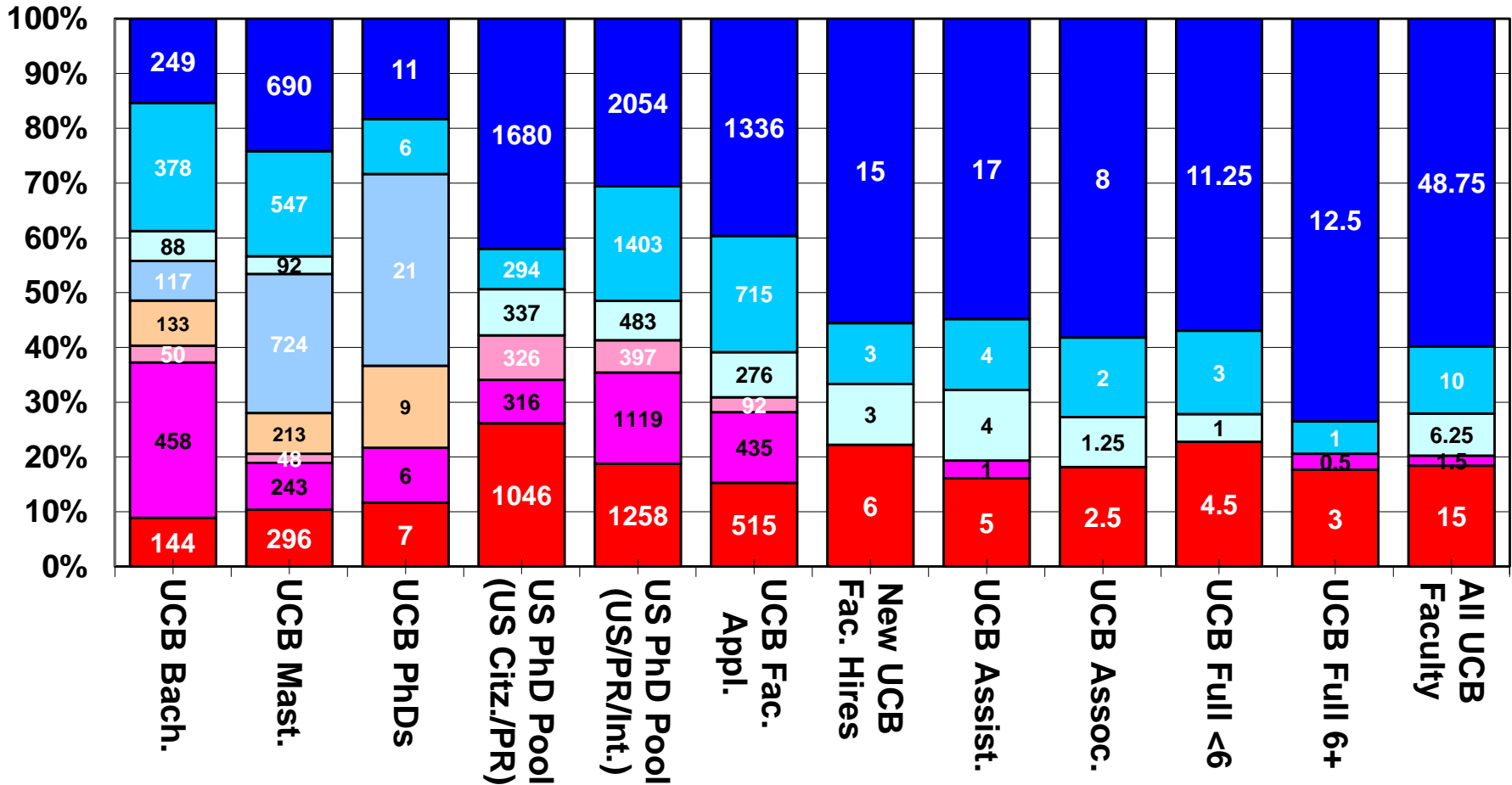
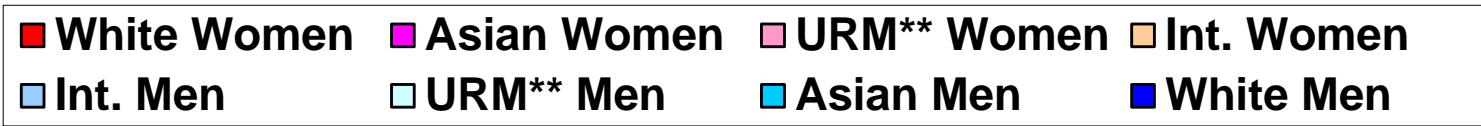


UCB Haas School of Business

Equity Benchmarks

**Prepared by Office for Faculty Equity & Welfare
August 2017**

UCB Haas School of Business, Diversity Pipeline*, AY2016-17

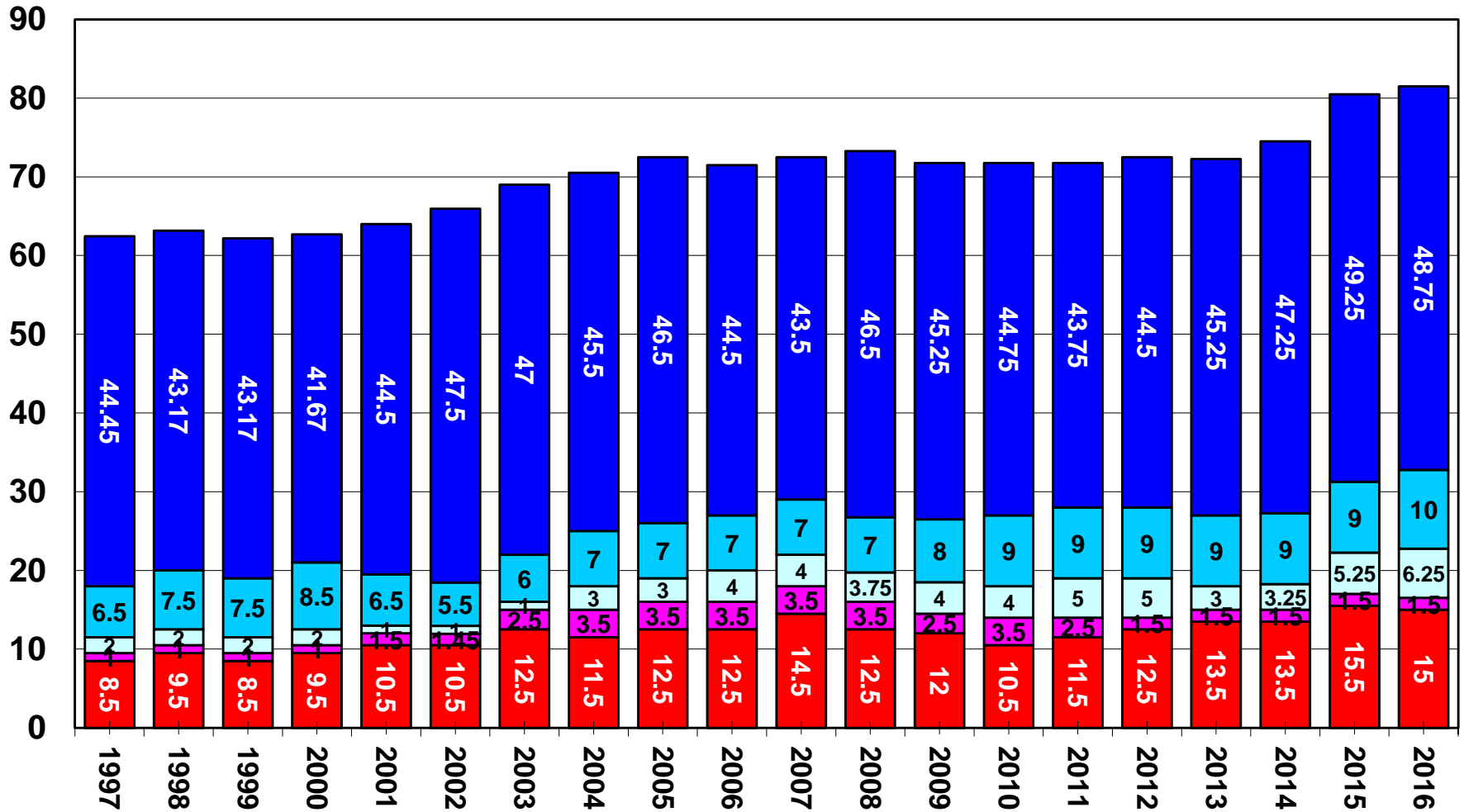


Sources: UCB Degree File, 2011-12--2015-16; Survey of Earned Doctorates (All US PhDs, 2011-15); UCB APRecruit, AY 2012-13—2016-17; Faculty Personnel Records, AY2012-13—2016-17 (Spring). Faculty FTE data as of 4/30/2017.

*All data (degrees, pool, & faculty FTE) are cut to dean level. UCB degree data does not supply race/ethn. for Int. students. Unknown gender/race/ethn. are excluded from pool/applicant analysis. Includes multiple appointments and part-time faculty.

**URM=African Am./African/Black, Native American, & Hispanic.

UCB Faculty Haas School of Business*, AY1997-98--2016-17



Sources: UCB Faculty Personnel Records, AY1997-98--2016-17.
Faculty FTE data as of 4/30/2017.

*Includes multiple appointment & part-time faculty.
**URM=African American, Native American, & Hispanic.