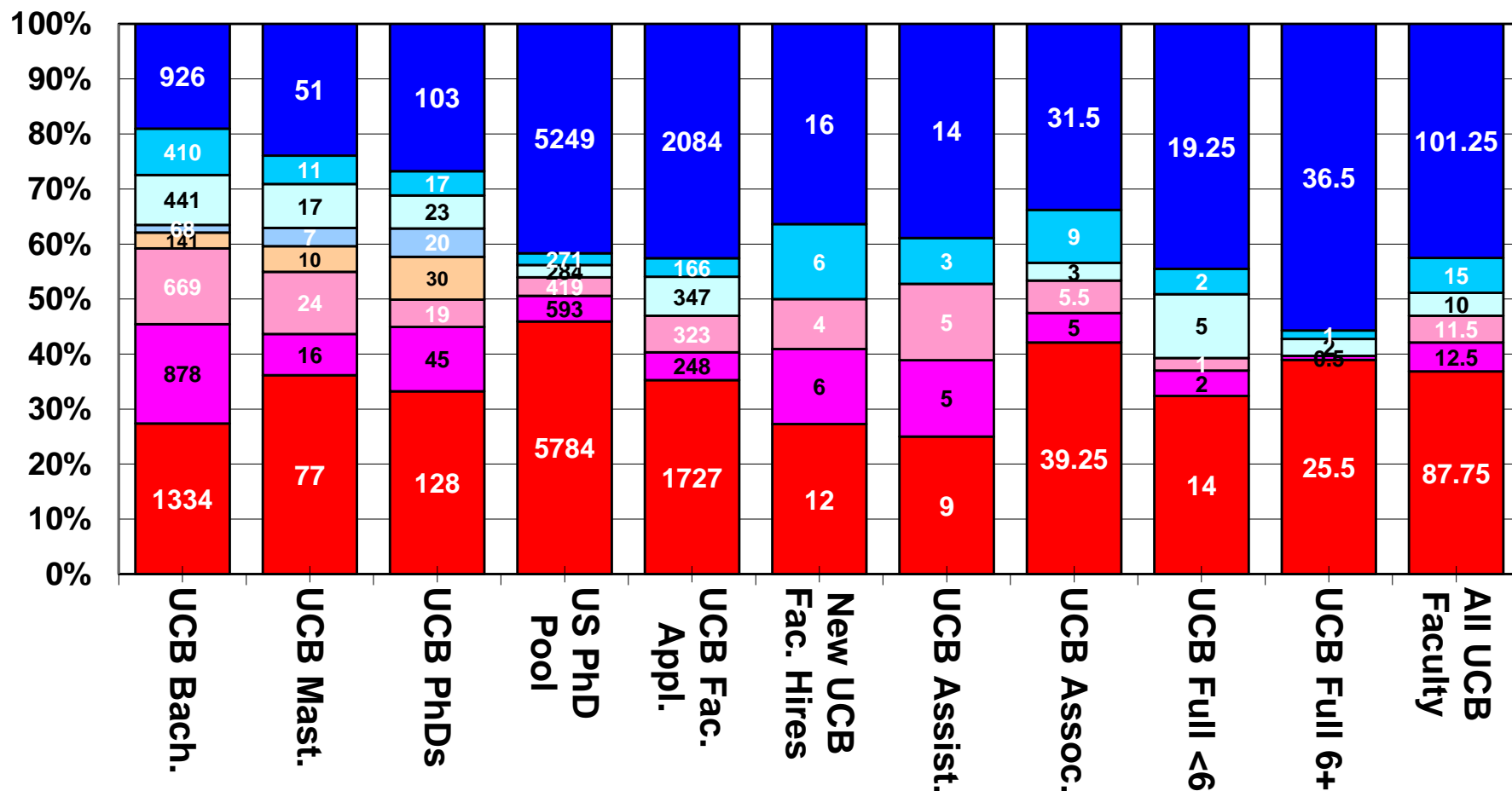
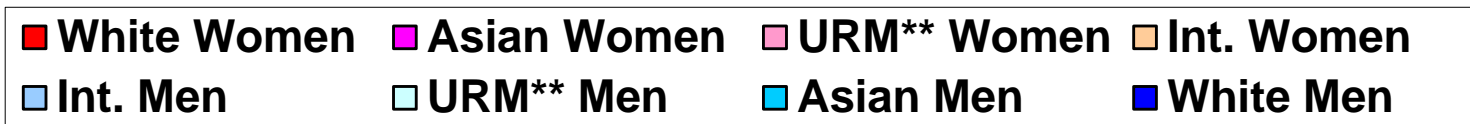


UCB L&S Div of Arts & Humanities

Equity Benchmarks

**Prepared by Office for Faculty Equity & Welfare
July 2016**

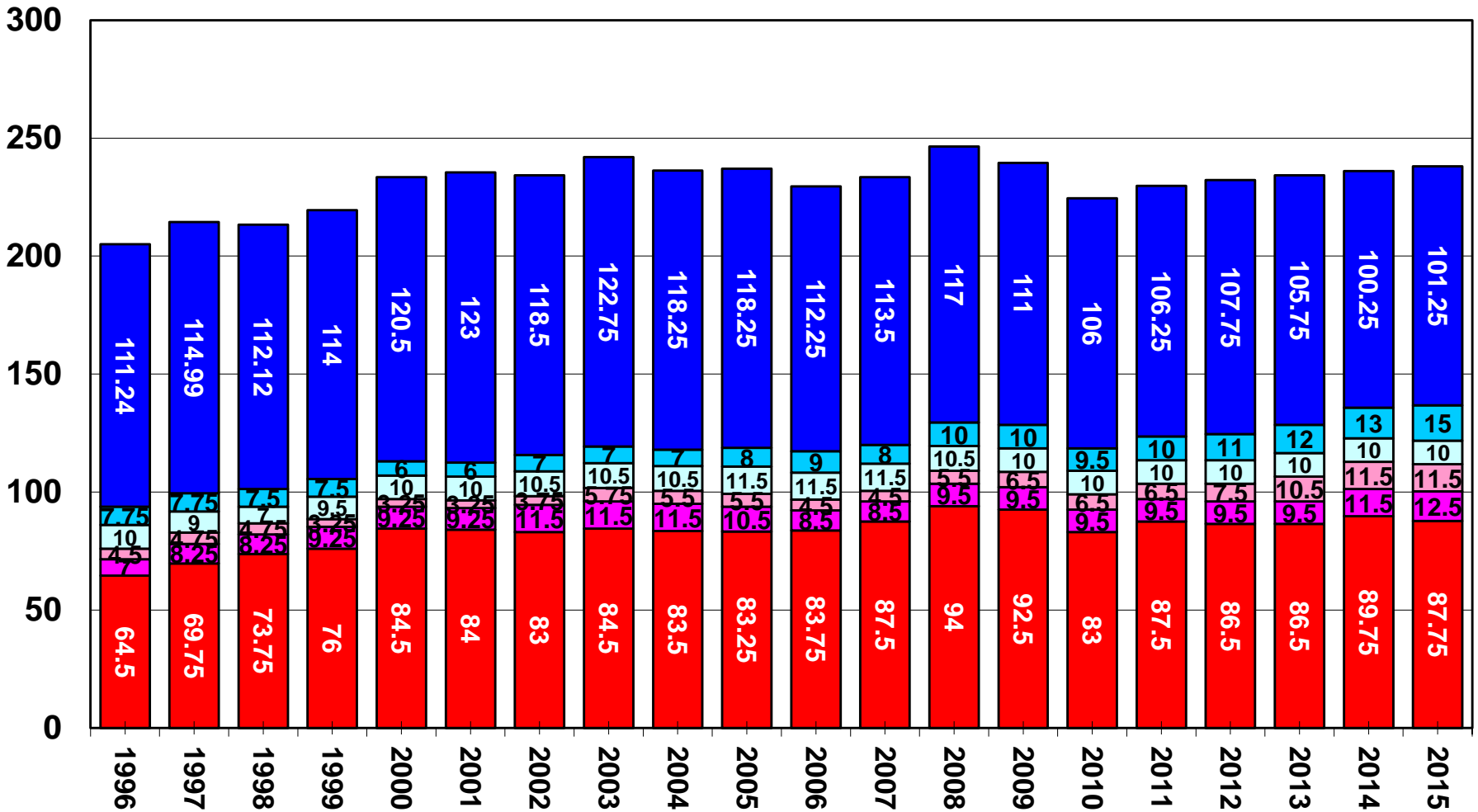
UCB L&S Div of Arts & Humanities, Diversity Pipeline*, AY2015-16



Sources: UCB Degree File, 2010-11--2014-15; Survey of Earned Doctorates (US, PR, 2010-2014); UCB APRecruit, AY 2012-13—2015-16; Faculty Personnel Records, AY2011-12—2015-16 (Spring). Faculty FTE data as of 4/30/2016.

*All data (degrees, pool, & faculty FTE) are cut to dean level. Unknown gender/race/ethn. are excluded from pool analysis. Includes multiple appointments and part-time faculty.
 **URM=African American, Native American, & Hispanic.

UCB Faculty L&S Div of Arts & Humanities*, AY1996-97--2015-16



Sources: UCB Faculty Personnel Records, AY1996-97--2015-16.
Faculty FTE data as of 4/30/2016.

*Includes multiple appointment & part-time faculty.
**URM=African American, Native American, & Hispanic.