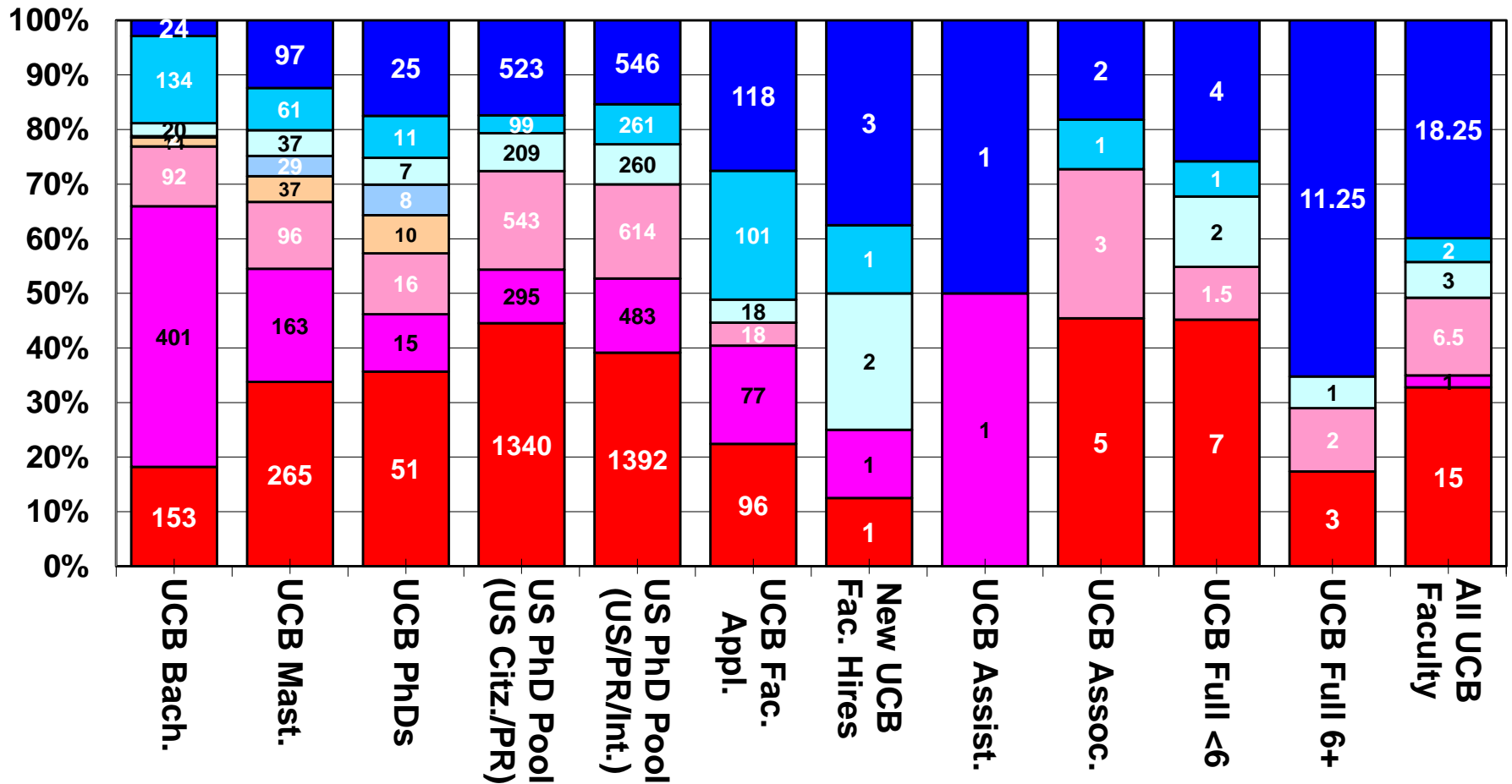
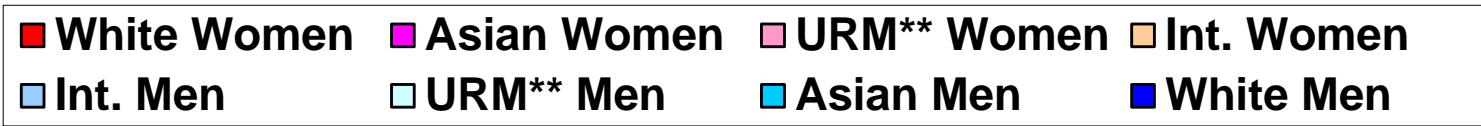


# **UCB School of Public Health**

## ***Equity Benchmarks***

**Prepared by Office for Faculty Equity & Welfare  
August 2017**

# UCB School of Public Health, Diversity Pipeline\*, AY2016-17

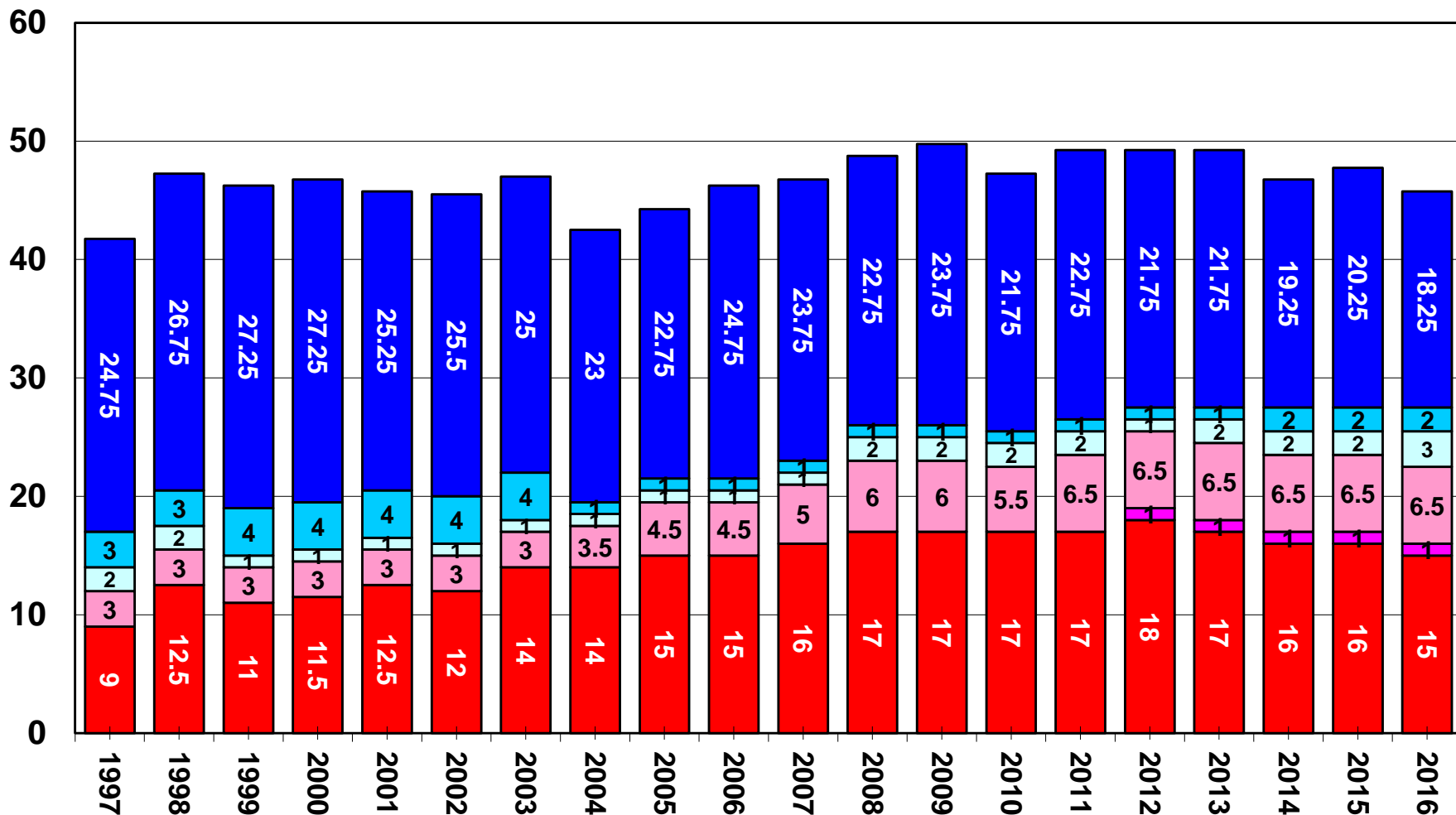


Sources: UCB Degree File, 2011-12--2015-16; Survey of Earned Doctorates (All US PhDs, 2011-15); UCB APRecruit, AY 2012-13—2016-17; Faculty Personnel Records, AY2012-13—2016-17 (Spring). Faculty FTE data as of 4/30/2017.

\*All data (degrees, pool, & faculty FTE) are cut to dean level. UCB degree data does not supply race/ethn. for Int. students. Unknown gender/race/ethn. are excluded from pool/applicant analysis. Includes multiple appointments and part-time faculty.

\*\*URM=African Am./African/Black, Native American, & Hispanic.

# UCB Faculty School of Public Health\*, AY1997-98--2016-17



Sources: UCB Faculty Personnel Records, AY1997-98--2016-17.  
Faculty FTE data as of 4/30/2017.

\*Includes multiple appointment & part-time faculty.  
\*\*URM=African American, Native American, & Hispanic.