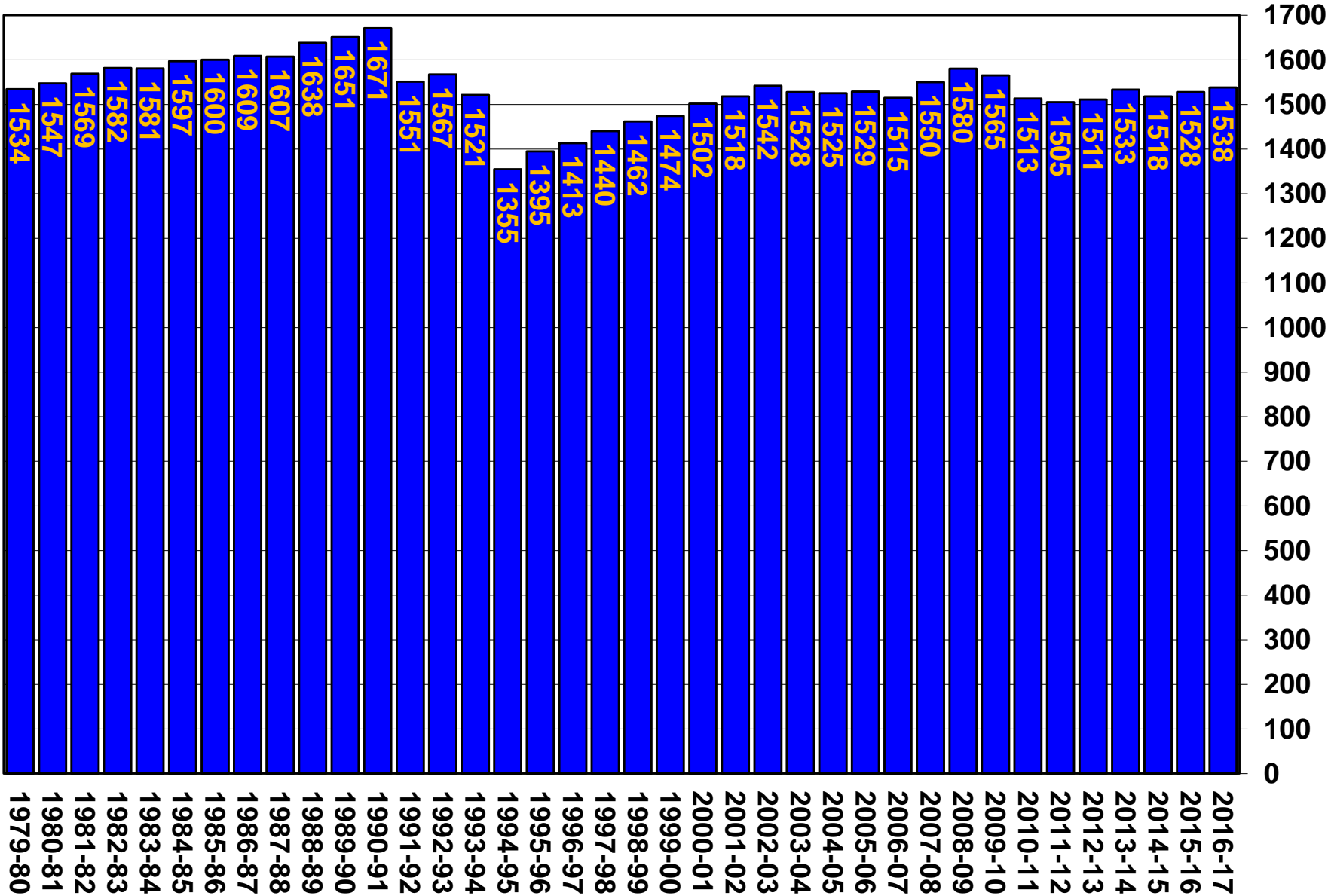


# **UC Berkeley Faculty Profile Over Time**

**September 12, 2016**

Prepared by Marc Goulden

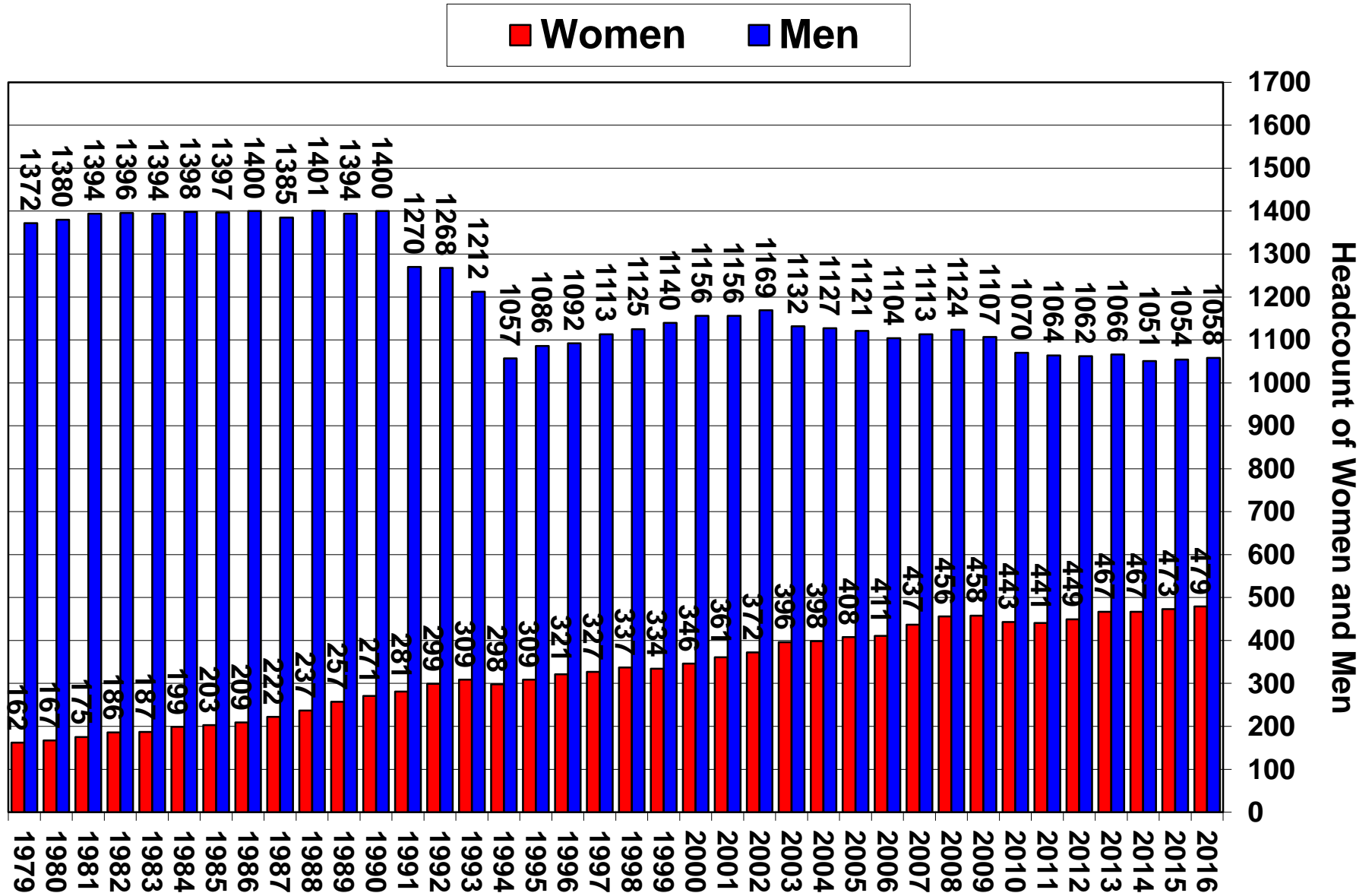
# UC Berkeley Faculty Headcount, AY 1979-80—2016-17\* (spring semester)



Source: UCB Faculty Personnel Records, AY1979-80—2016-17.

\*2016-17 is preliminary, as of Sept. 12, 2016.

# UC Berkeley Faculty Headcount by Gender, AY 1979-80—2016-17\*

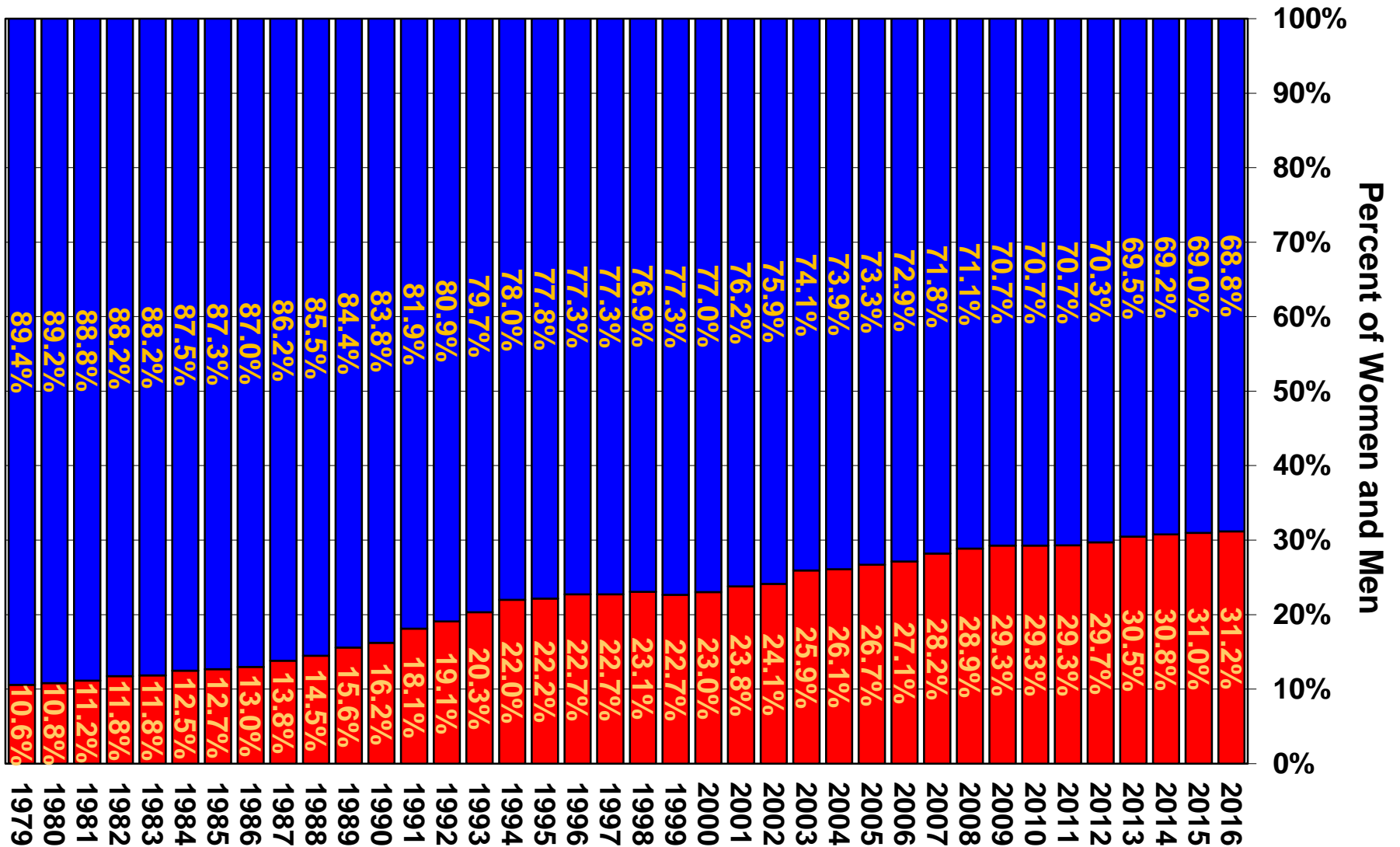


Headcount of Women and Men

1700  
1600  
1500  
1400  
1300  
1200  
1100  
1000  
900  
800  
700  
600  
500  
400  
300  
200  
100  
0

# UC Berkeley Faculty Headcount by Gender, AY 1979-80—2016-17\*

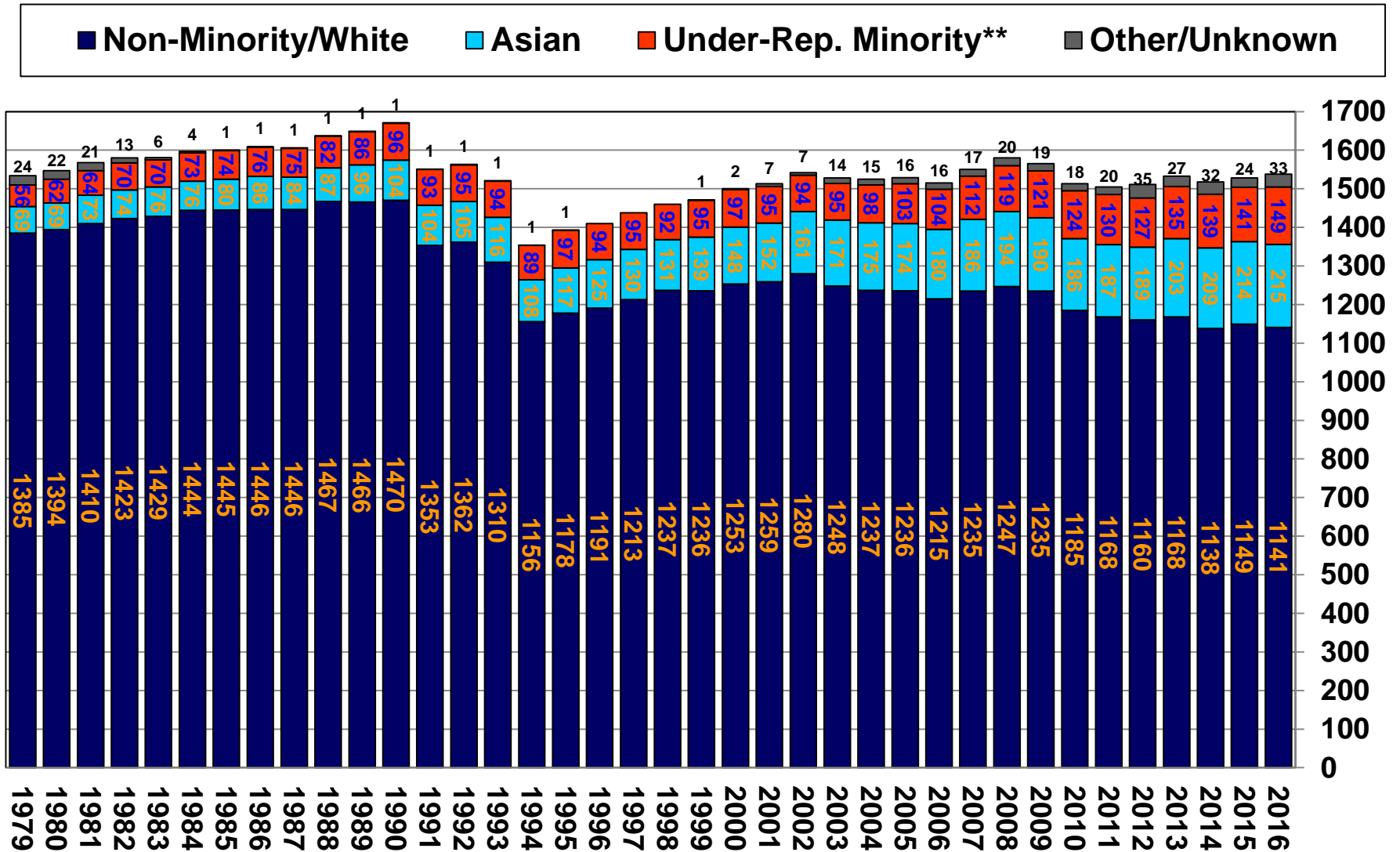
■ Women ■ Men



Percent of Women and Men

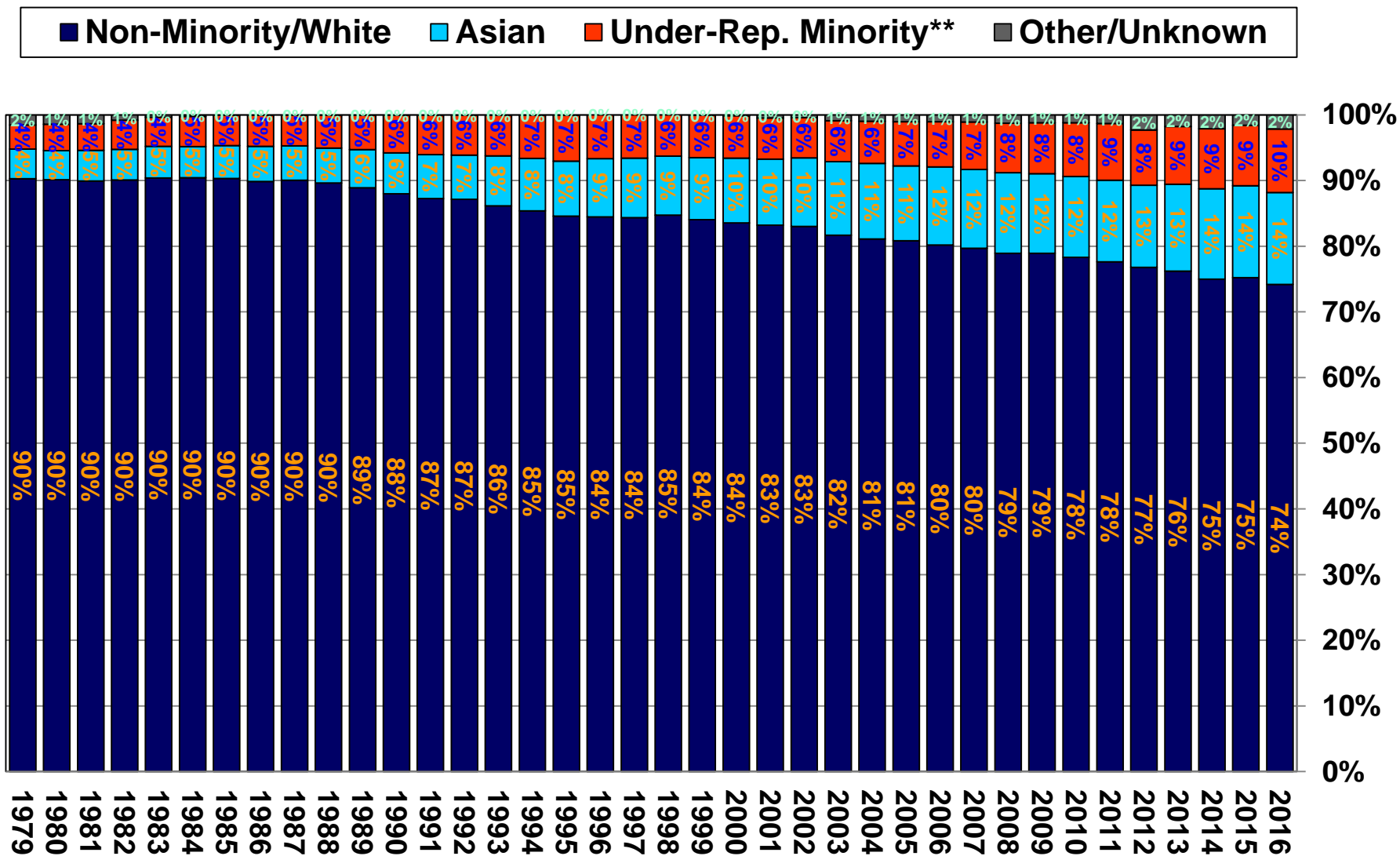
100%  
90%  
80%  
70%  
60%  
50%  
40%  
30%  
20%  
10%  
0%

# UC Berkeley Faculty Headcount by Race/Ethnicity Groups, AY 1979-80—2016-17\*



\*\*URM includes African Am., Hispanic, and Native Am.

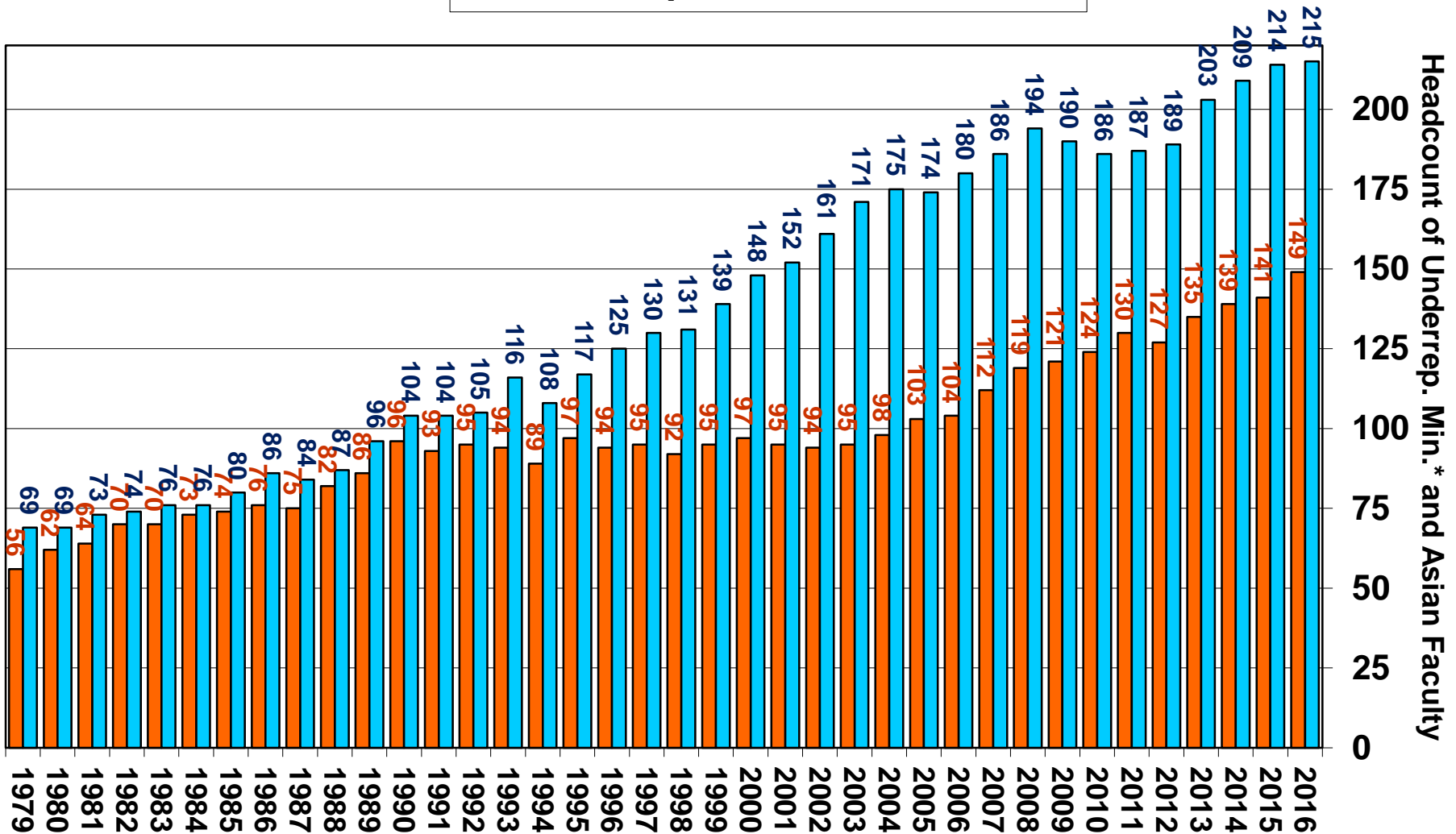
# UC Berkeley Faculty Headcount by Race/Ethnicity Groups, AY 1979-80—2016-17\*



\*\*URM includes African Am., Hispanic, and Native Am.

# UC Berkeley Faculty Headcount by Race/Ethnicity: Underrepresented Minorities (URM)\* and Asian American, AY 1979-80—2016-17\*\*

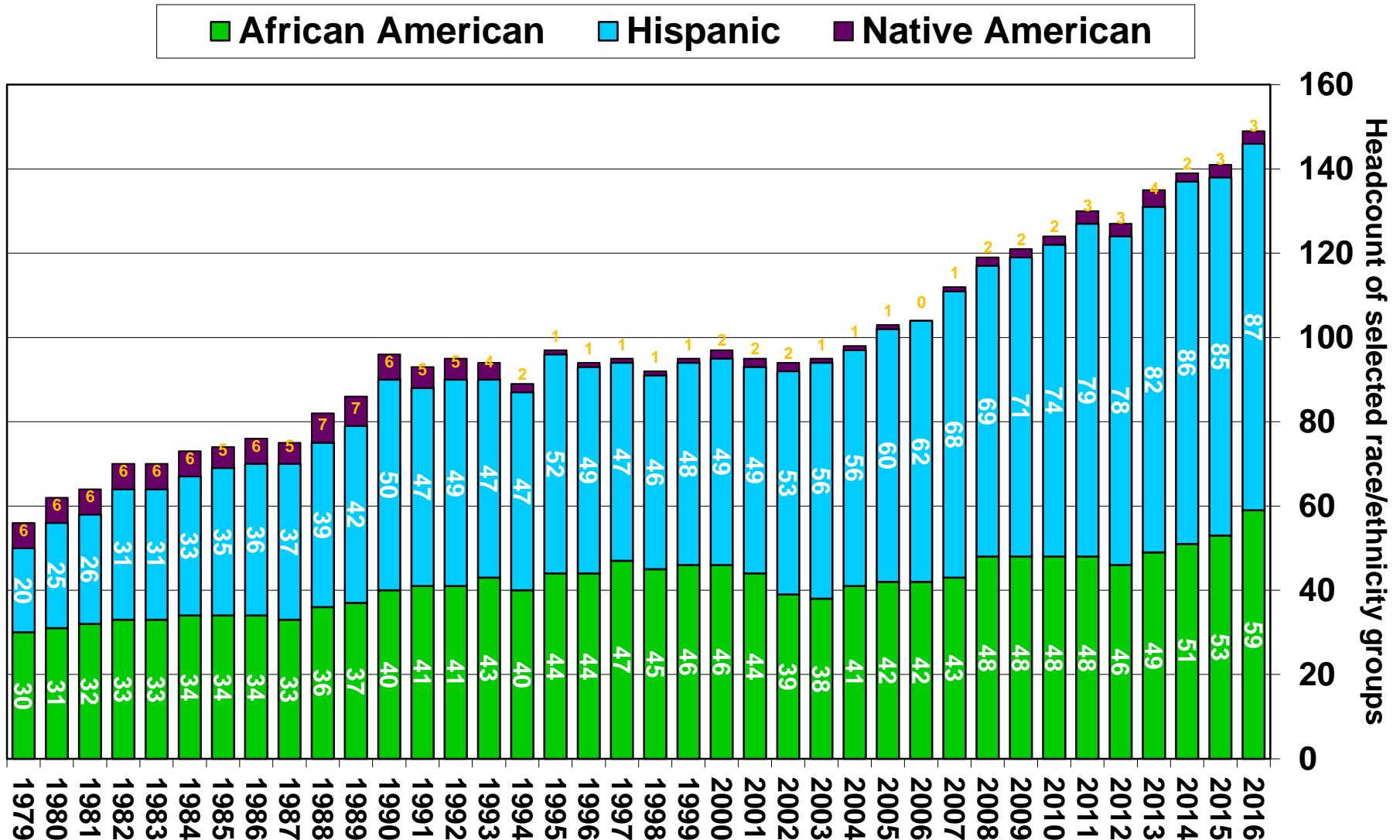
■ Underrep. Min.\*
 ■ Asian Am.



\*URM includes African Am., Hispanic, and Native Am.

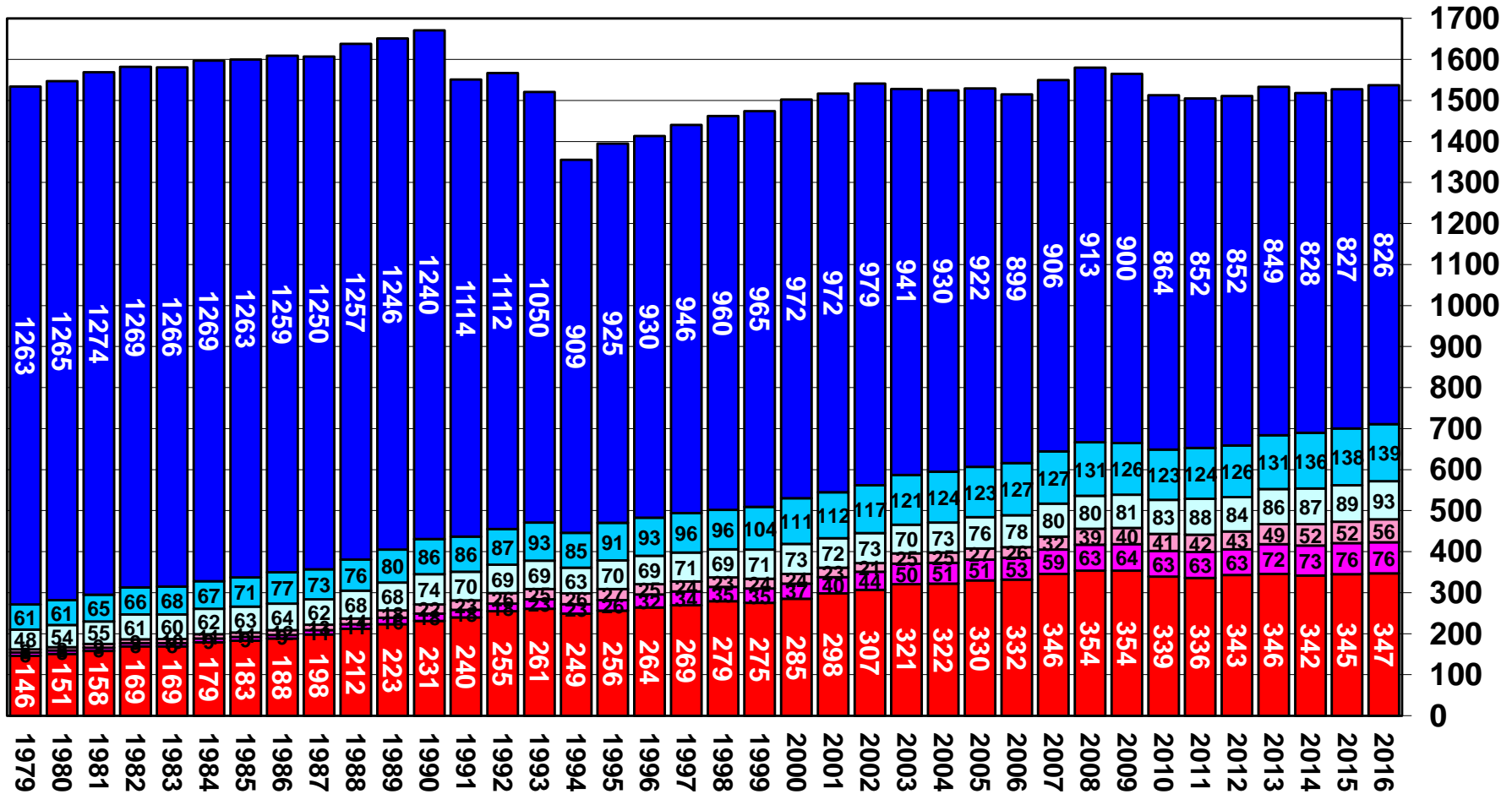
\*\*2016-17 is preliminary, as of Sept. 12, 2016.

# UC Berkeley Faculty Headcount by Race/Ethnicity: African American, Hispanic, & Native American, AY 1979-80—2016-17\*



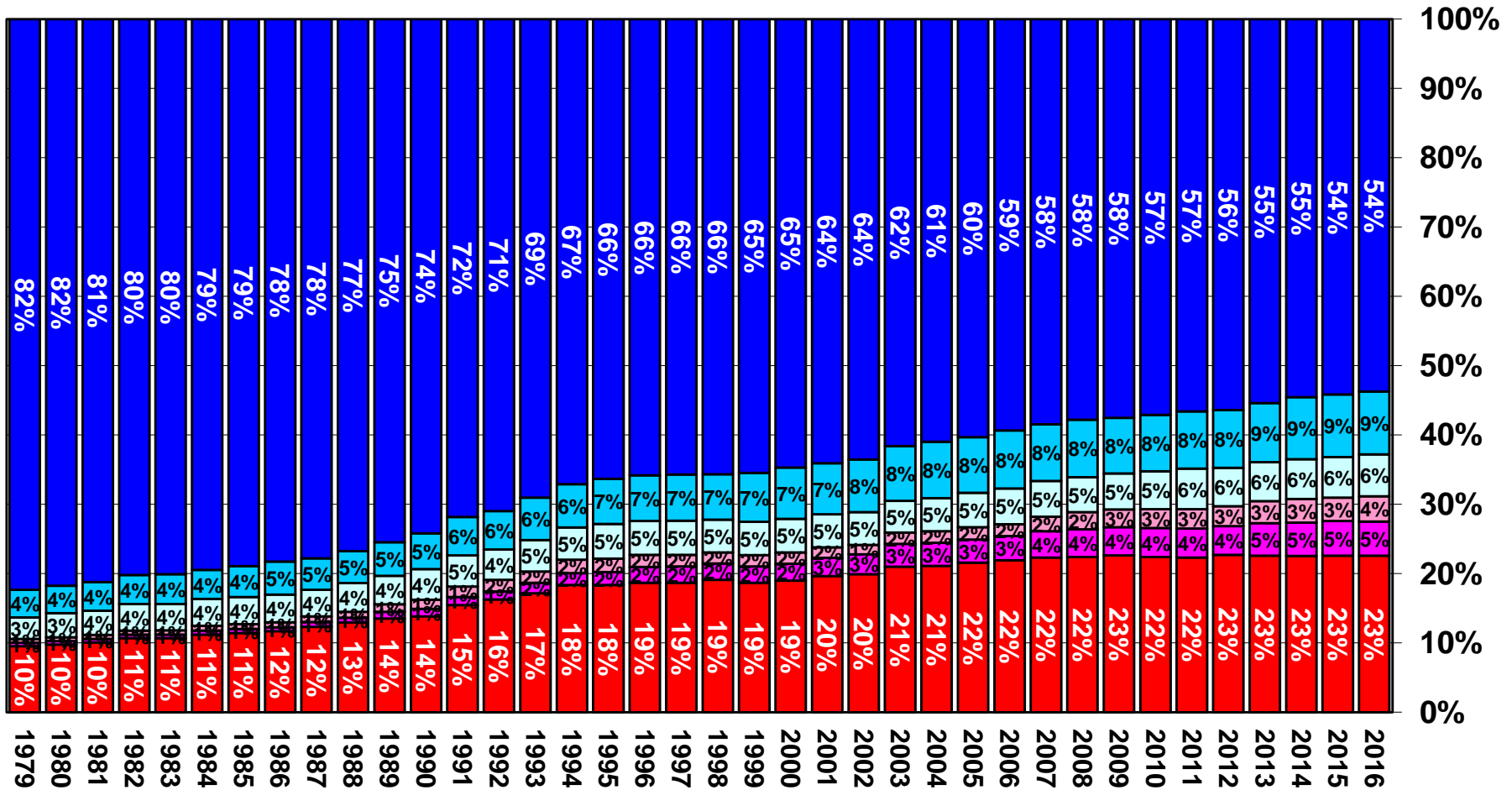


# UC Berkeley Faculty Headcount by Gender/Ethnicity, AY 1979-80—2016-17\*



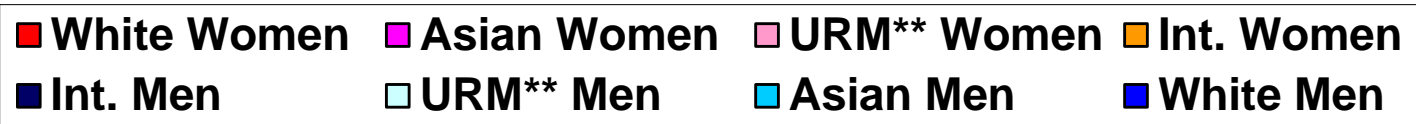
\*\*URM includes African Am., Hispanic, and Native Am.

# UC Berkeley Faculty Headcount by Gender/Ethnicity, AY 1979-80—2016-17\*



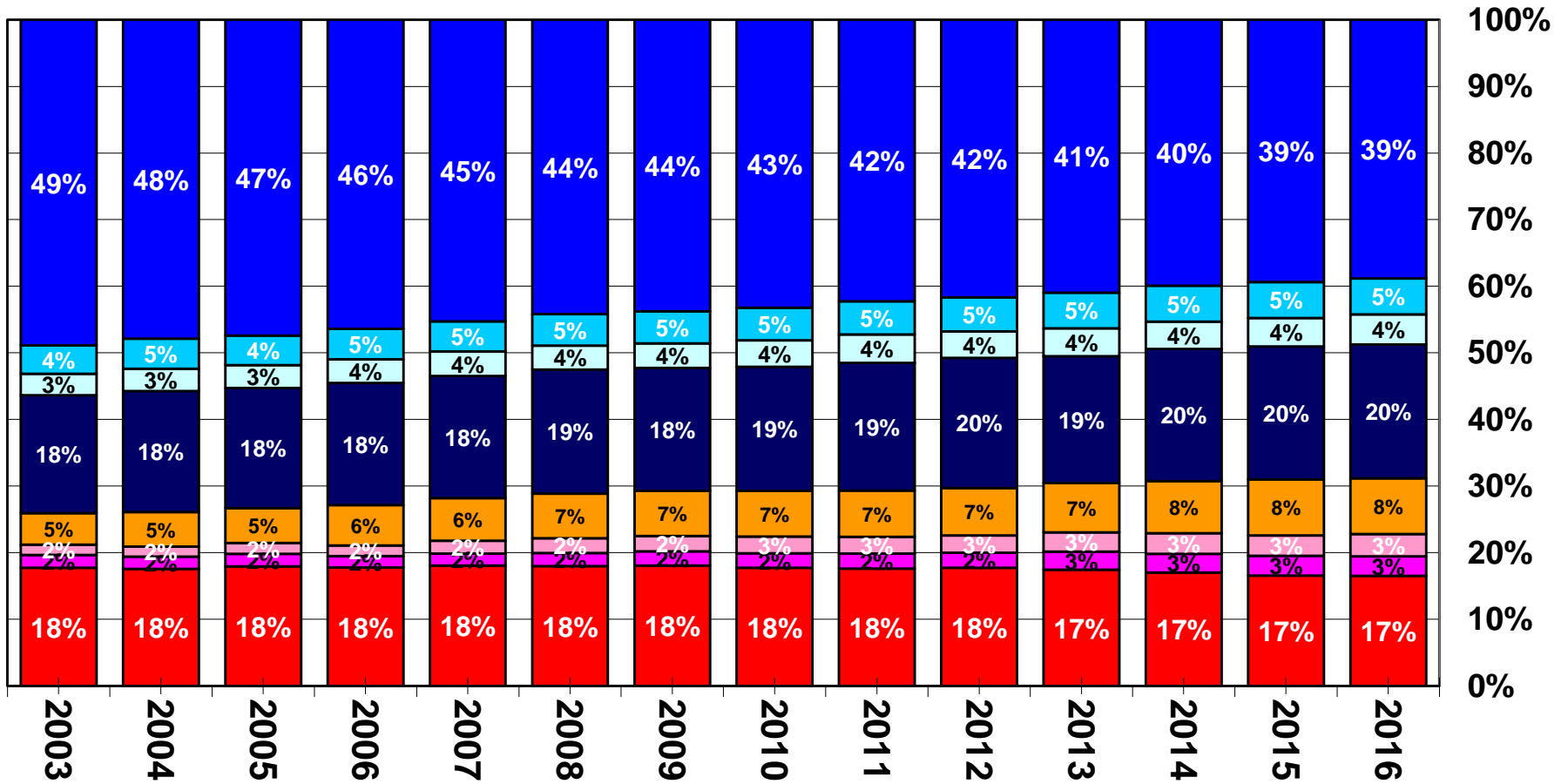
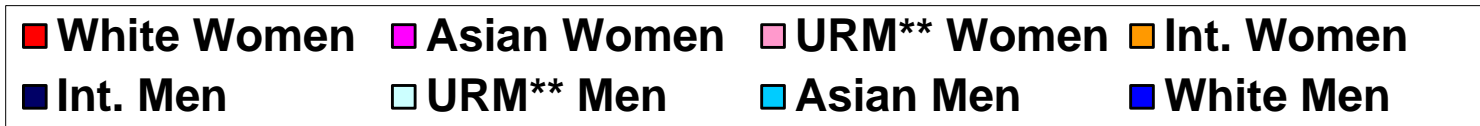
\*\*URM includes African Am., Hispanic, and Native Am.

# UCB Faculty Headcount by Gender, Ethnicity, and International Status, AY 2003-04—2016-17\*



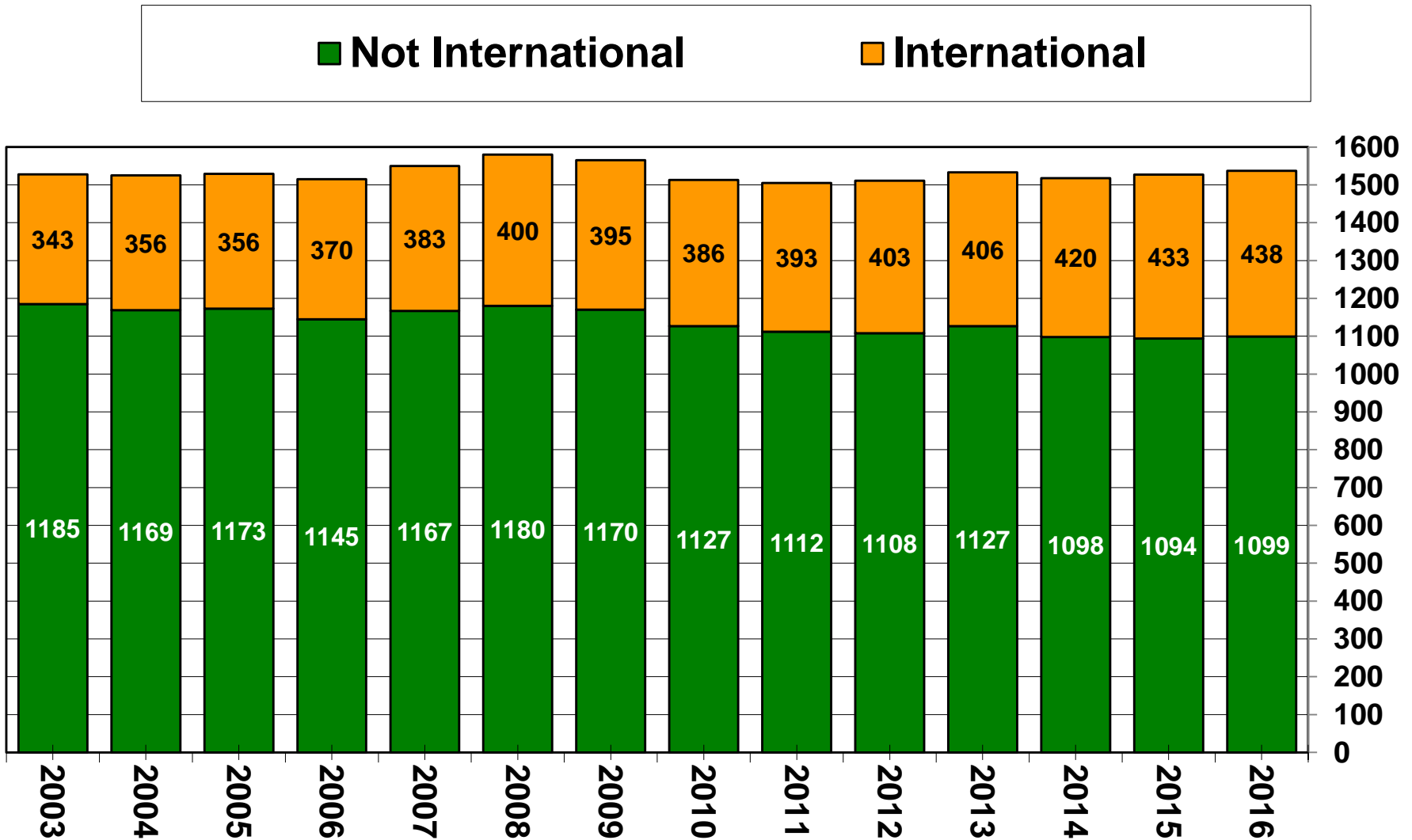
\*\*URM includes African Am., Hispanic, and Native Am.

# UCB Faculty Headcount by Gender, Ethnicity, and International Status, AY 2003-04—2016-17\*

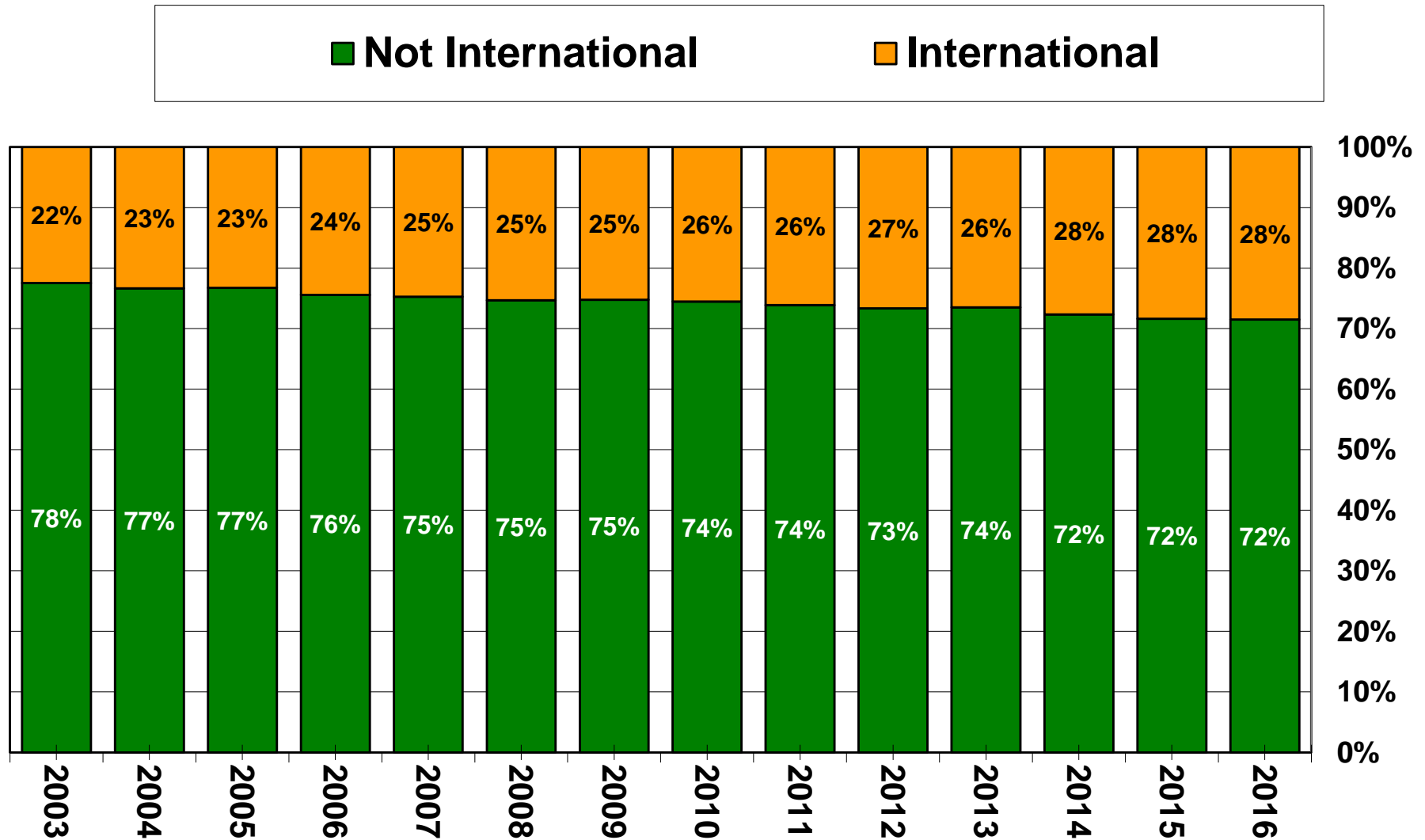


\*\*URM includes African Am., Hispanic, and Native Am.

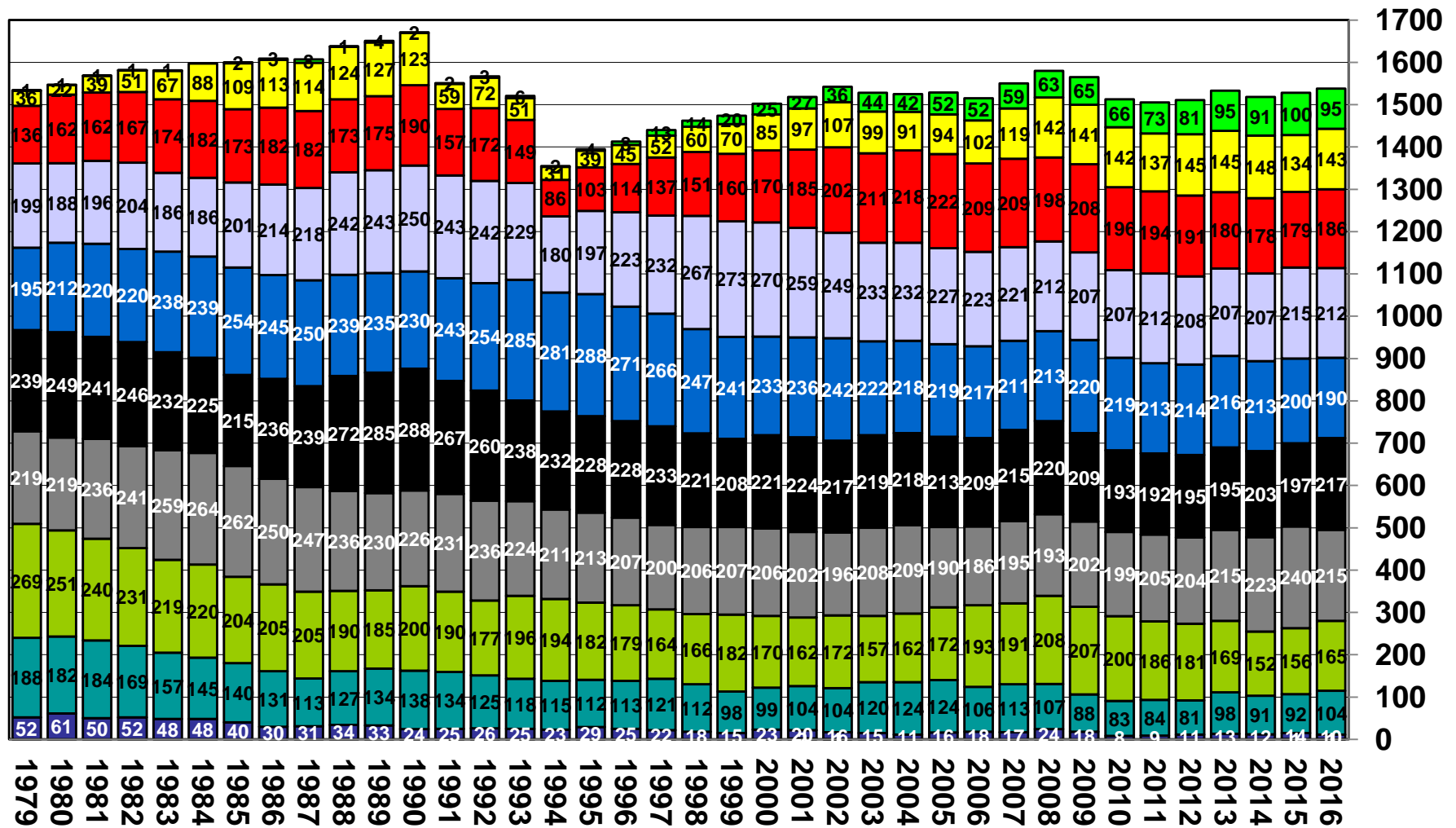
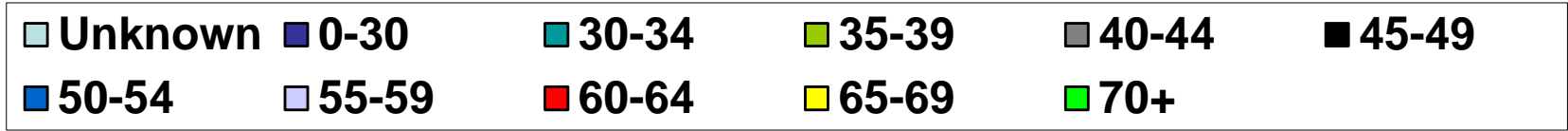
# UCB Faculty Headcount by International Status, AY 2003-04—2016-17\*



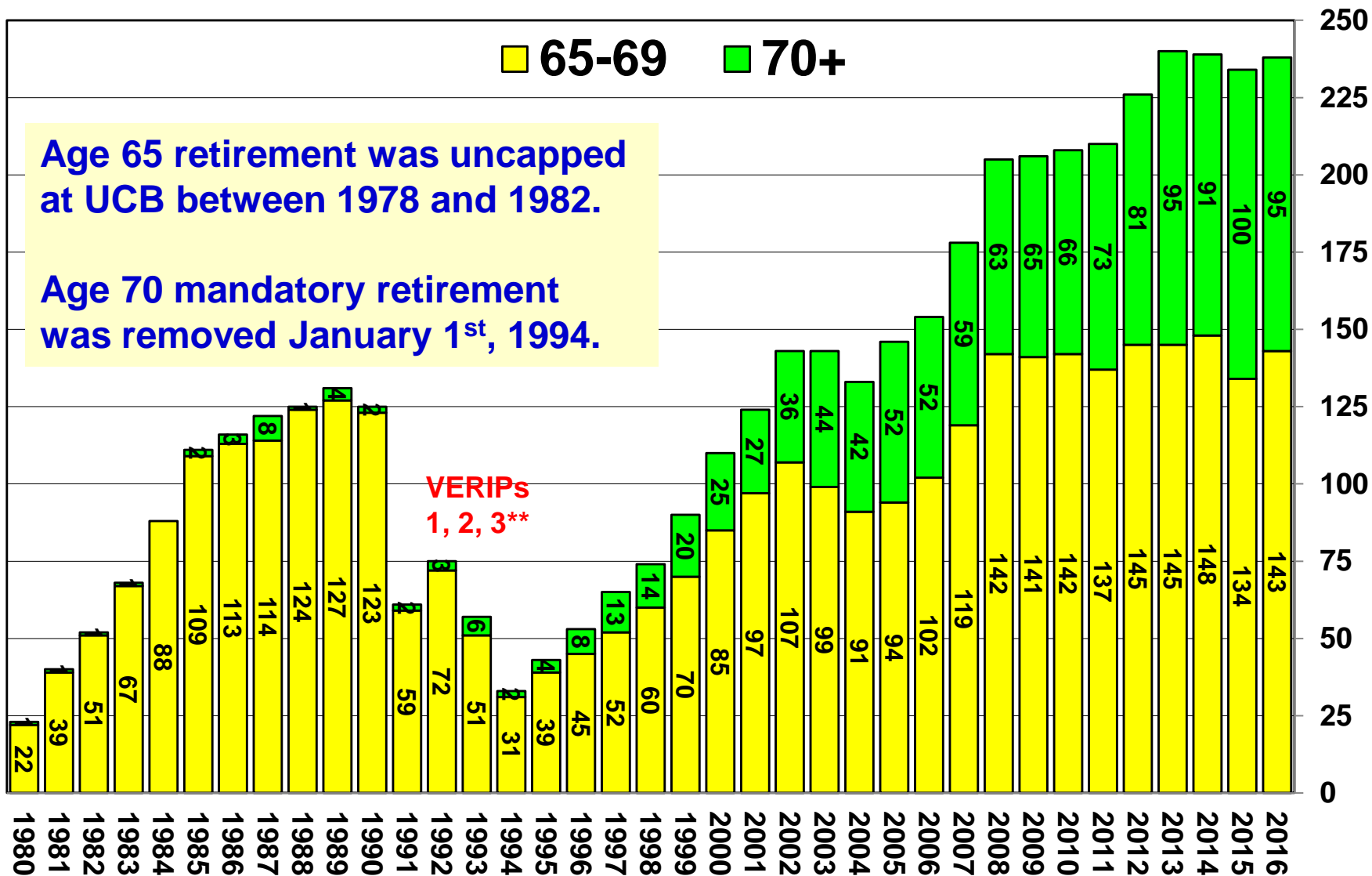
# UCB Faculty Headcount by International Status, AY 2003-04—2016-17\*



# UC Berkeley Faculty Headcount by Age Categories, AY 1979-80—2016-17\*



# UC Berkeley Faculty Headcount by Selected Age Categories, AY 1980-81—2016-17\*



**\*\*Voluntary Early Retirement Incentive Programs.**



# Mean and Median Age of UC Berkeley Faculty, AY 1980-81—2016-17\*

