

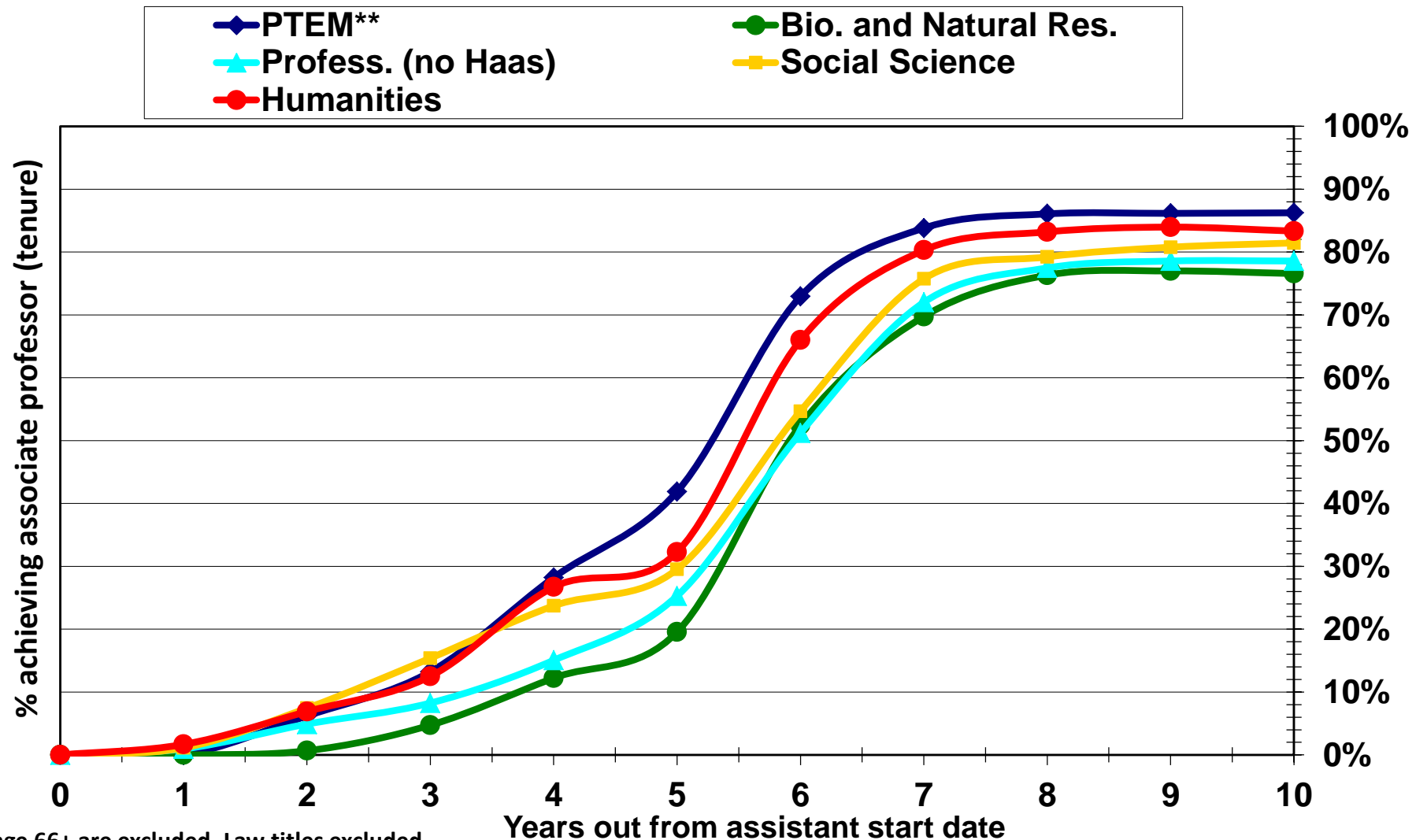
Faculty Advancement at UCB by Broad Disciplinary Groups

Prepared by Marc Goulden, 11/6/2018

Data as of 11/5/2018

Achieving Tenure at UC Berkeley by Broad Disciplinary Groups

(Includes All Current and Former* UCB Faculty with Assistant Start Dates *July 1993-2017*)



*Former UCB faculty age 66+ are excluded. Law titles excluded.

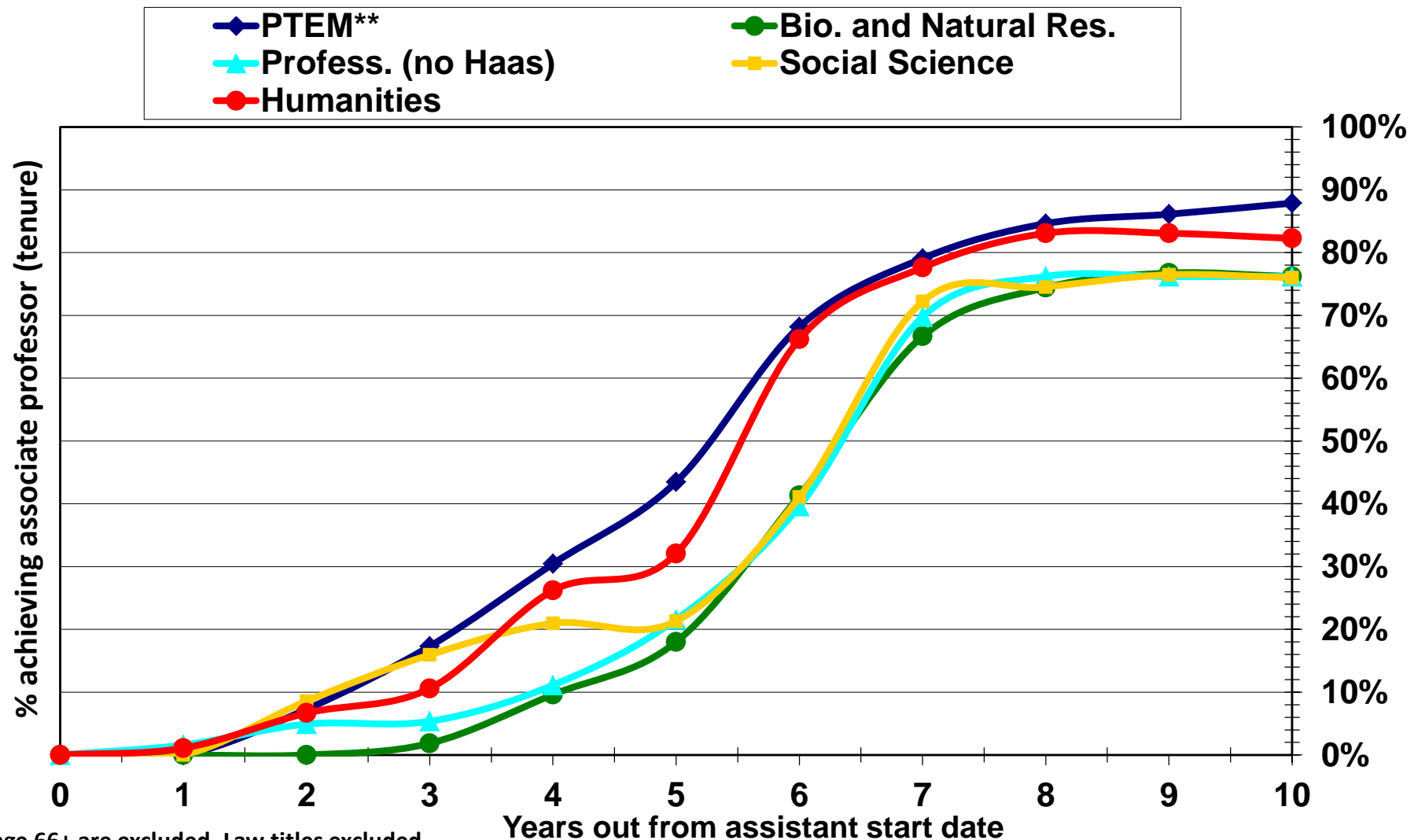
**Includes Phys. Sciences, Tech., Eng., & Math.

Total N=PTEM, 281 to 189; Bio. & Nat. R., 159 to 111; Profess., 105 to 70; Social Sc., 180 to 124; Human., 180 to 126; Haas Business, 101 to 59.

Source: UCB Faculty Personnel Records, AY 1993-94—2018-19. Prepared by Marc Goulden, Nov. 6, 2018. Data as of 11/5/2018

Women Only: Achieving Tenure at UC Berkeley by Broad Disciplinary Groups

(Includes All Current and Former* UCB Faculty with Assistant Start Dates *July 1993-2017*)



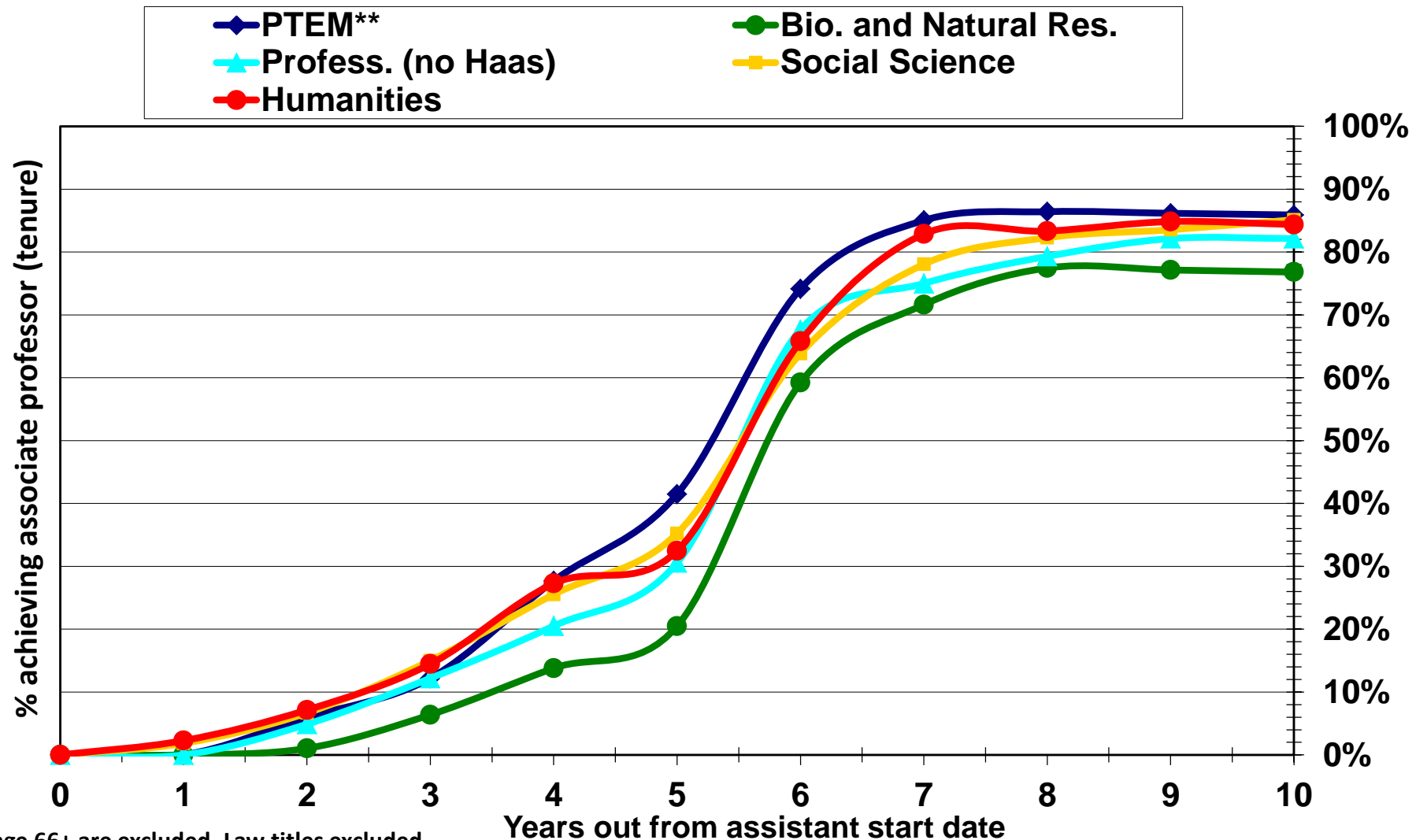
*Former UCB faculty age 66+ are excluded. Law titles excluded.

**Includes Phys. Sciences, Tech., Eng., & Math.

Total N=PTEM, 58 to 33; Bio. & Nat. R., 57 to 42; Prof., 63 to 42; Social Sc., 71 to 50; Human., 92 to 62; Haas Business, 25 to 17.

Men Only: Achieving Tenure at UC Berkeley by Broad Disciplinary Groups

(Includes All Current and Former* UCB Faculty with Assistant Start Dates *July 1993-2017*)



*Former UCB faculty age 66+ are excluded. Law titles excluded.

**Includes Phys. Sciences, Tech., Eng., & Math.

Total N=PTEM, 223 to 156; Bio. & Nat. R., 102 to 69; Prof., 42 to 28;
Social Sc., 109 to 74; Human., 88 to 64; Haas Business, 76 to 42.

Source: UCB Faculty Personnel Records, AY 1993-94—2018-19. Prepared by Marc Goulden, Nov. 6, 2018. Data as of 11/5/2018

Tenure Rates

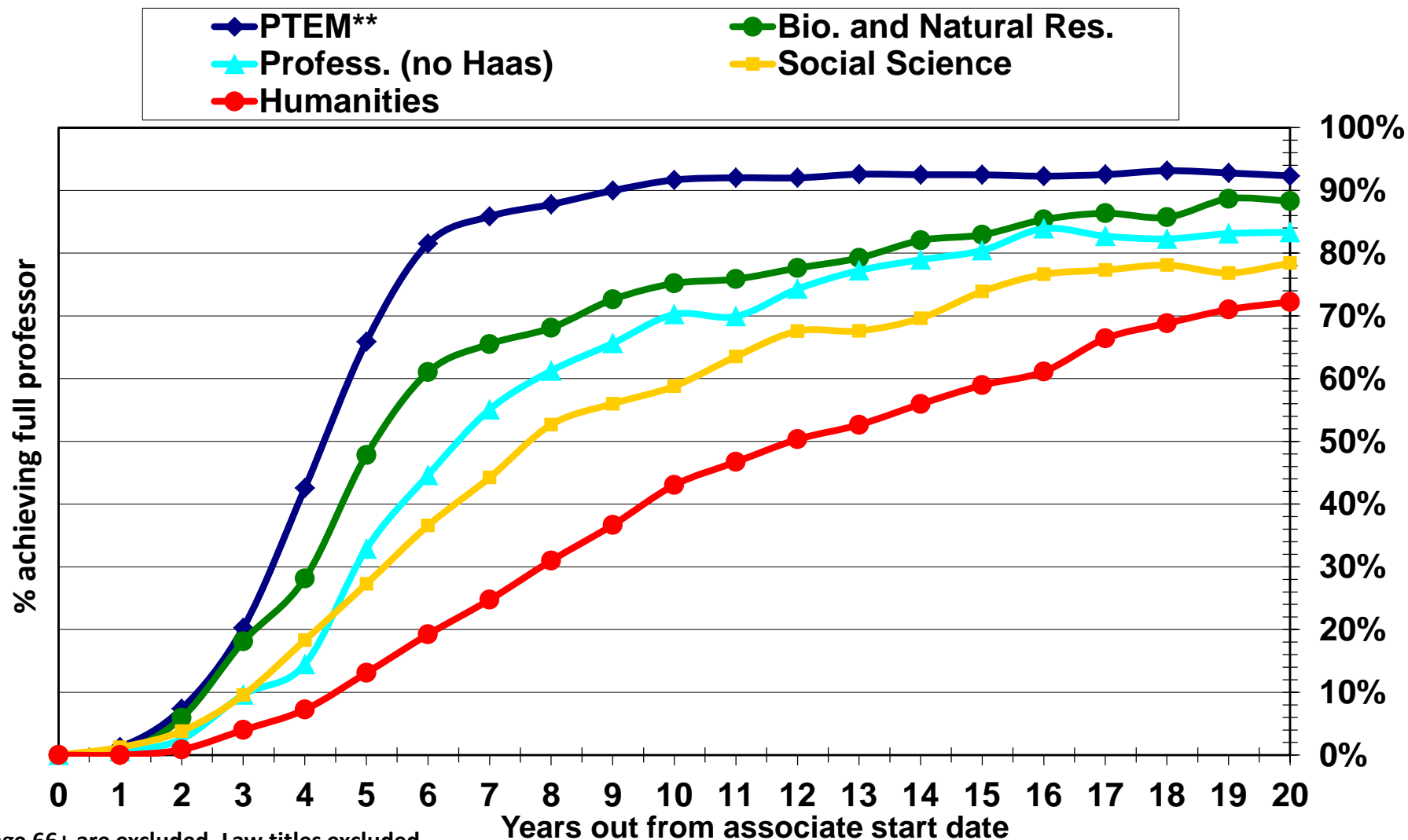
The data in the table below show the number of faculty (headcount) hired as assistant professors by gender/ethnicity with start dates of 2000-01 to 2009-10 (10-year cohort) who were granted tenure within the eight year period since their date of hire. Note: Some faculty separate before going up for tenure.

UCB Faculty, Tenure Rate (8 th year), 10-year cohort, July 2000-09							
Discipline		White	Asian	URM		Men	Women
Total # appointed as assist prof		316	79	48		277	174
# receiving tenure		253	65	39		229	130
% of group receiving tenure		80%	82%	81%		83%	75%*

*significant difference at $p < .05$.

Achieving Full Professor at UC Berkeley by Broad Disciplinary Groups

(Includes All Current and Former* UCB Faculty with Associate Start Dates *July 1983-2017*)



*Former UCB faculty age 66+ are excluded. Law titles excluded.

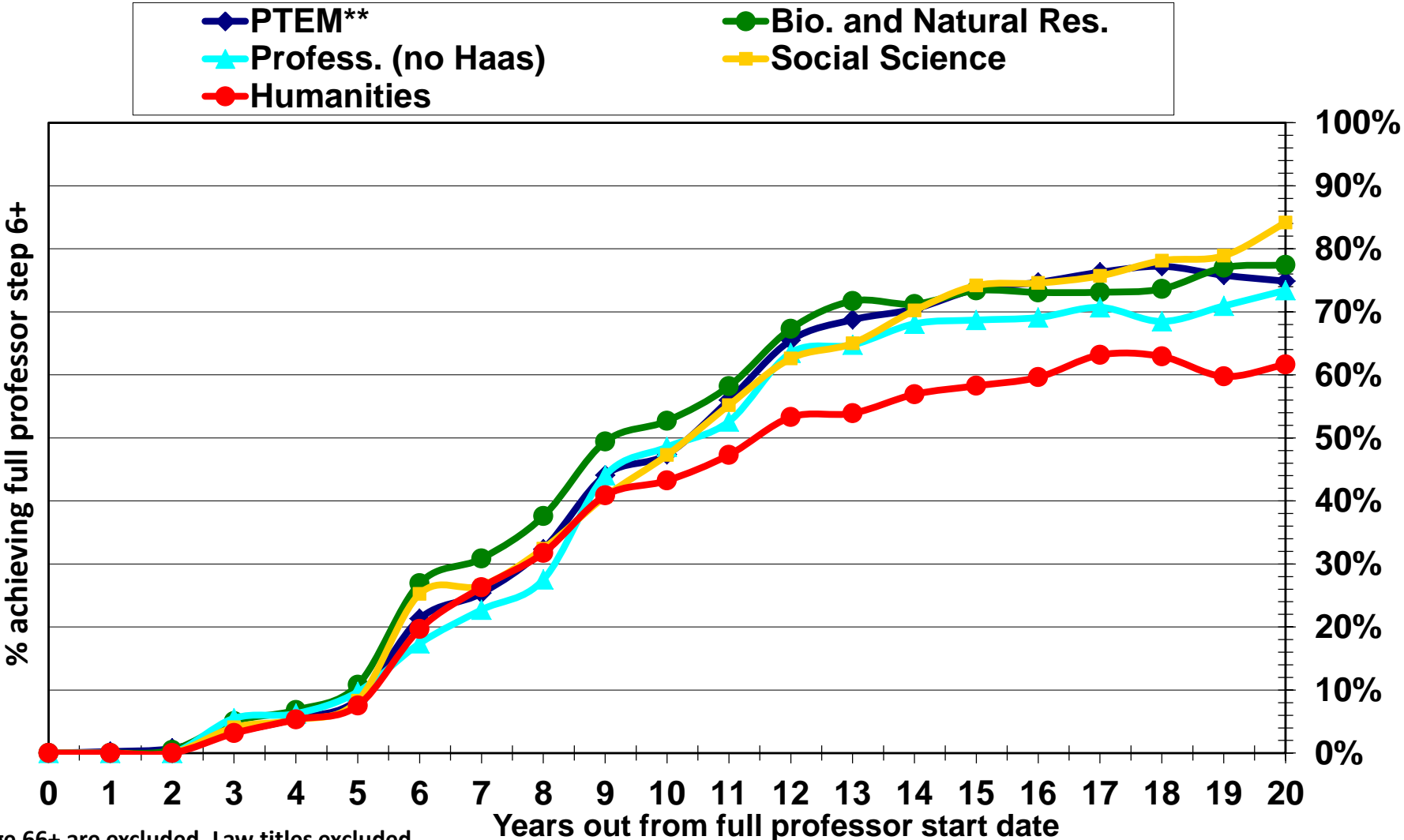
**Includes Phys. Sciences, Tech., Eng., & Math.

Total N=PTEM, 387 to 182; Bio. & Nat. R., 206 to 94; Profess., 164 to 72;
Social Sc., 243 to 88; Human., 238 to 90; Haas Business, 84 to 36.

Source: UCB Faculty Personnel Records, AY 1983-84—2018-19. Prepared by Marc Goulden, Nov. 6, 2018. Data as of 11/5/2018

Achieving Full Professor Step 6+ at UC Berkeley by Broad Disciplinary Groups

(Includes All Current and Former* UCB Faculty with Full Professor Start Dates *July 1983-2017*)



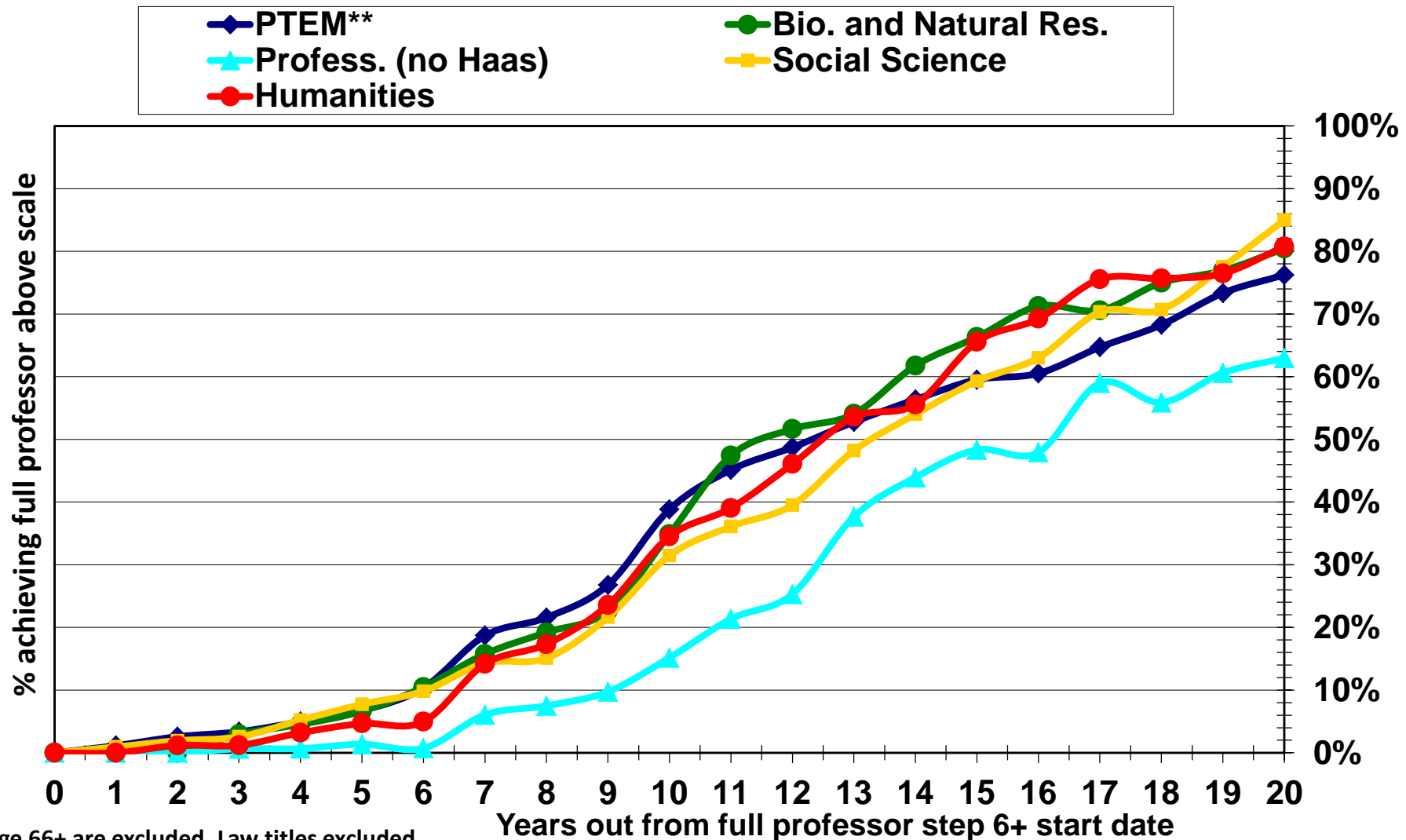
*Former UCB faculty age 66+ are excluded. Law titles excluded.

**Includes Phys. Sciences, Tech., Eng., & Math.

Total N=PTEM, 419 to 179; Bio. & Nat. R., 208 to 93; Prof., 194 to 79; Social Sc., 236 to 82; Human., 201 to 73; Haas Business, 67 to 27.

Achieving Full Professor Above Scale at UC Berkeley by Broad Disciplinary Groups

(Includes All Current and Former* UCB Faculty with Full Professor Step 6+ Start Dates *July 1983-2017*)



*Former UCB faculty age 66+ are excluded. Law titles excluded.

**Includes Phys. Sciences, Tech., Eng., & Math.

Total N=PTEM, 439 to 101; Bio. & Nat. R., 209 to 46; Profess., 170 to 27;
Social Sc., 215 to 40; Human., 181 to 26; Haas Business, 48 to 9.

Source: UCB Faculty Personnel Records, AY 1983-84—2018-19. Prepared by Marc Goulden, Nov. 6, 2018. Data as of 11/5/2018