

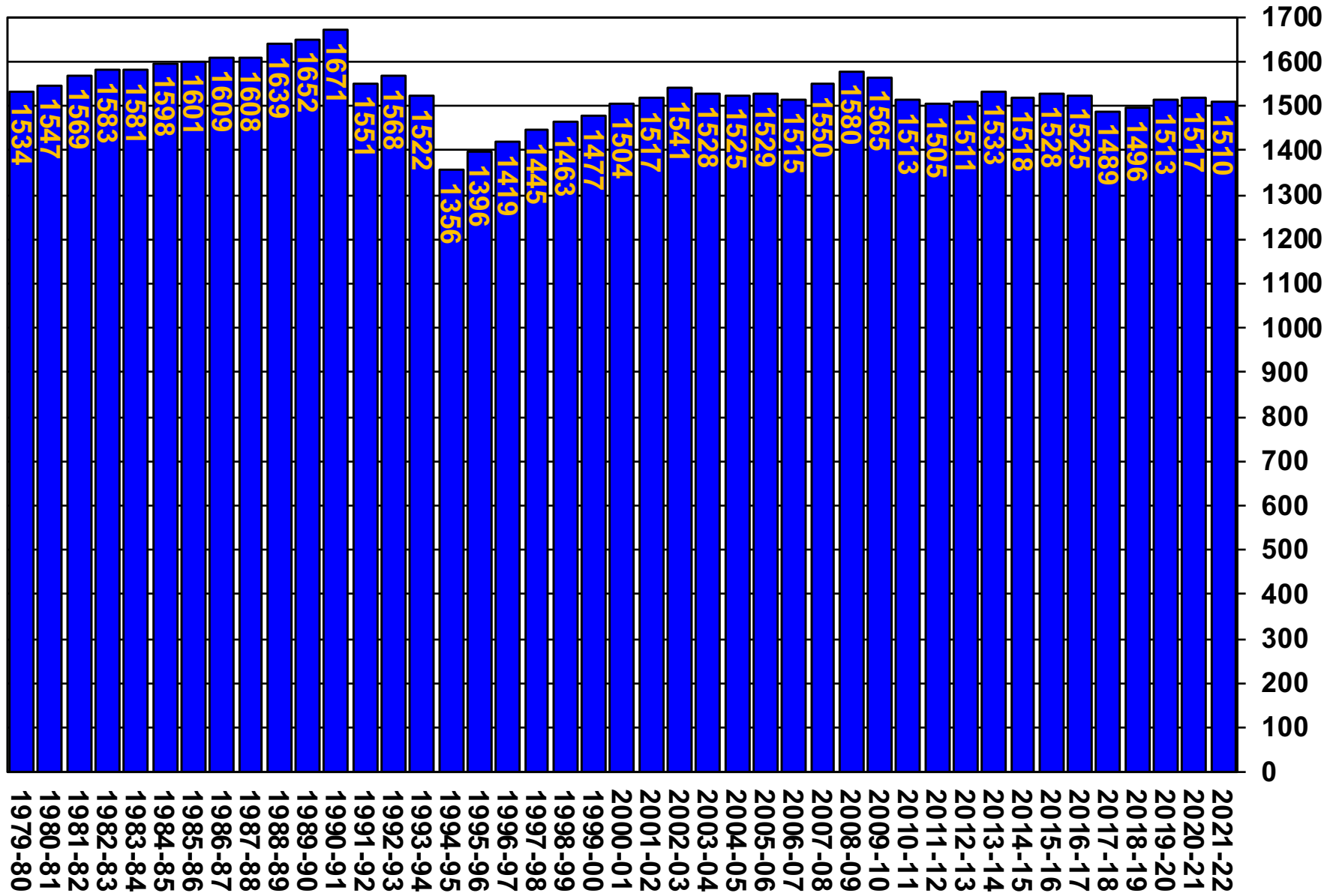
UC Berkeley Faculty Profile Over Time*

August 17, 2021

Prepared by Marc Goulden

*2021-22 is preliminary, as of August 17, 2021

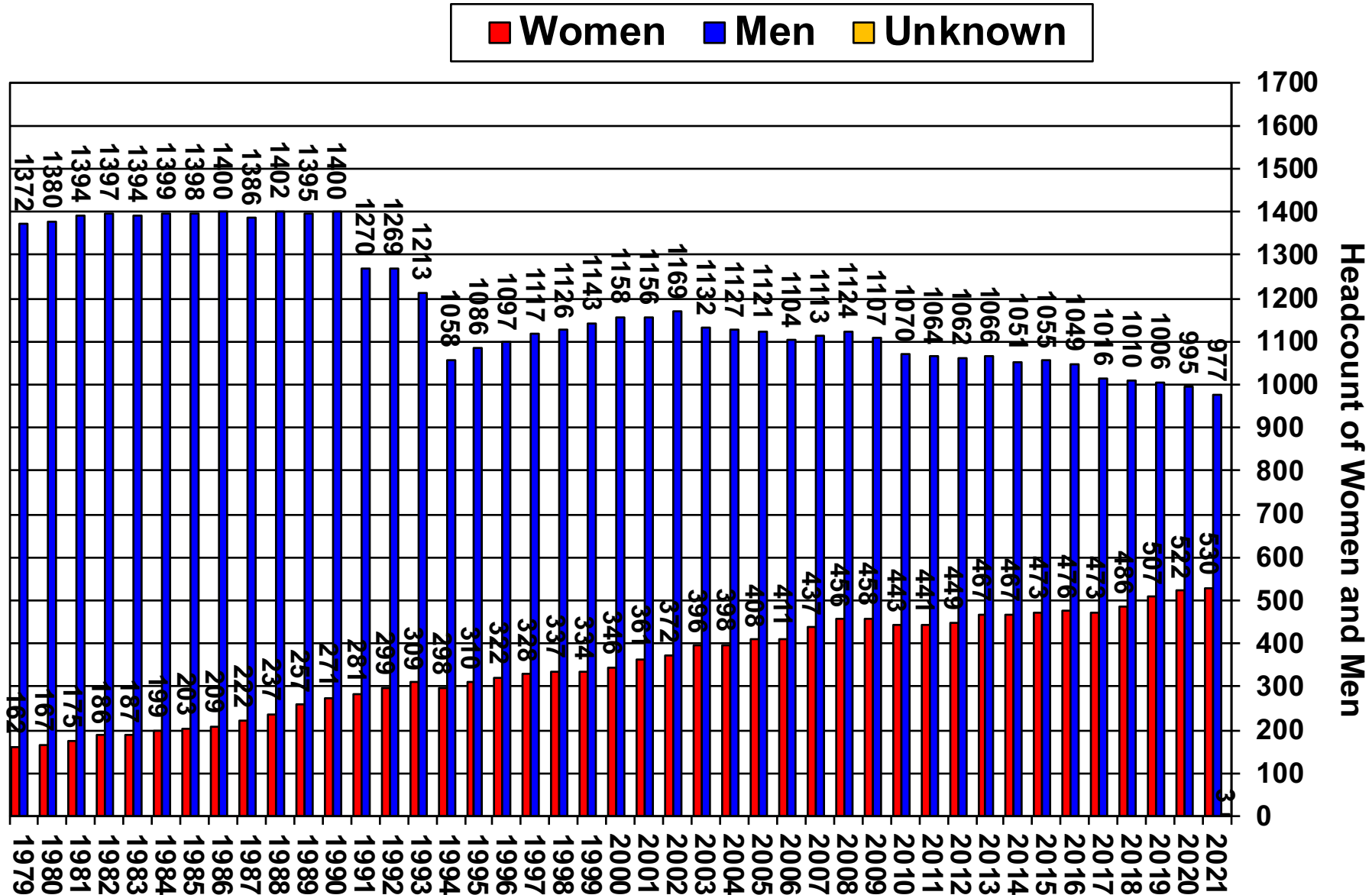
UC Berkeley Faculty Headcount, AY 1979-80—2021-22* (spring semester)



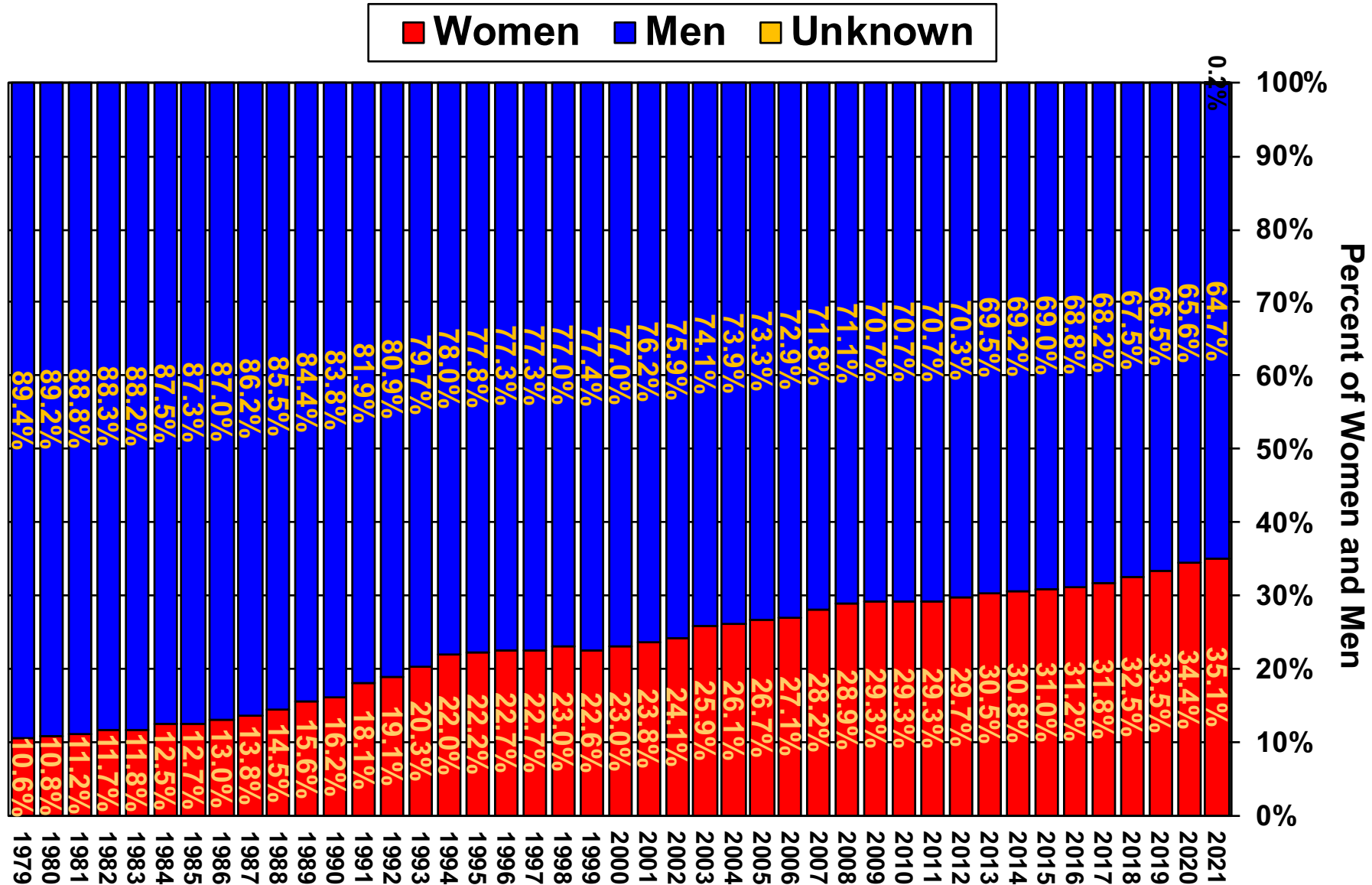
Source: UCB Faculty Personnel Records, AY1979-80—2021-22.

*2021-22 is preliminary, as of August 17, 2021.

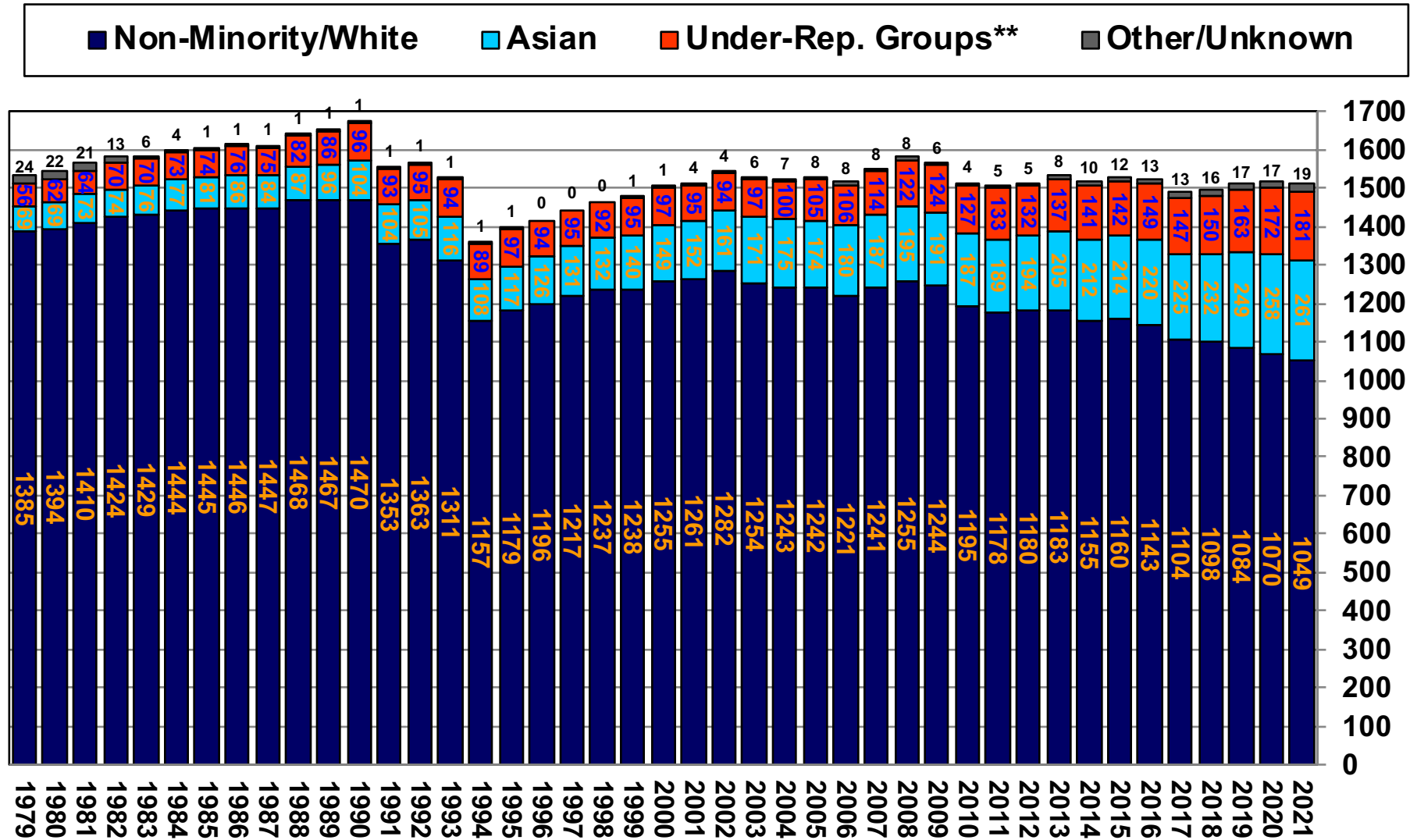
UC Berkeley Faculty Headcount by Gender, AY 1979-80—2021-22*



UC Berkeley Faculty Headcount by Gender, AY 1979-80—2021-22*

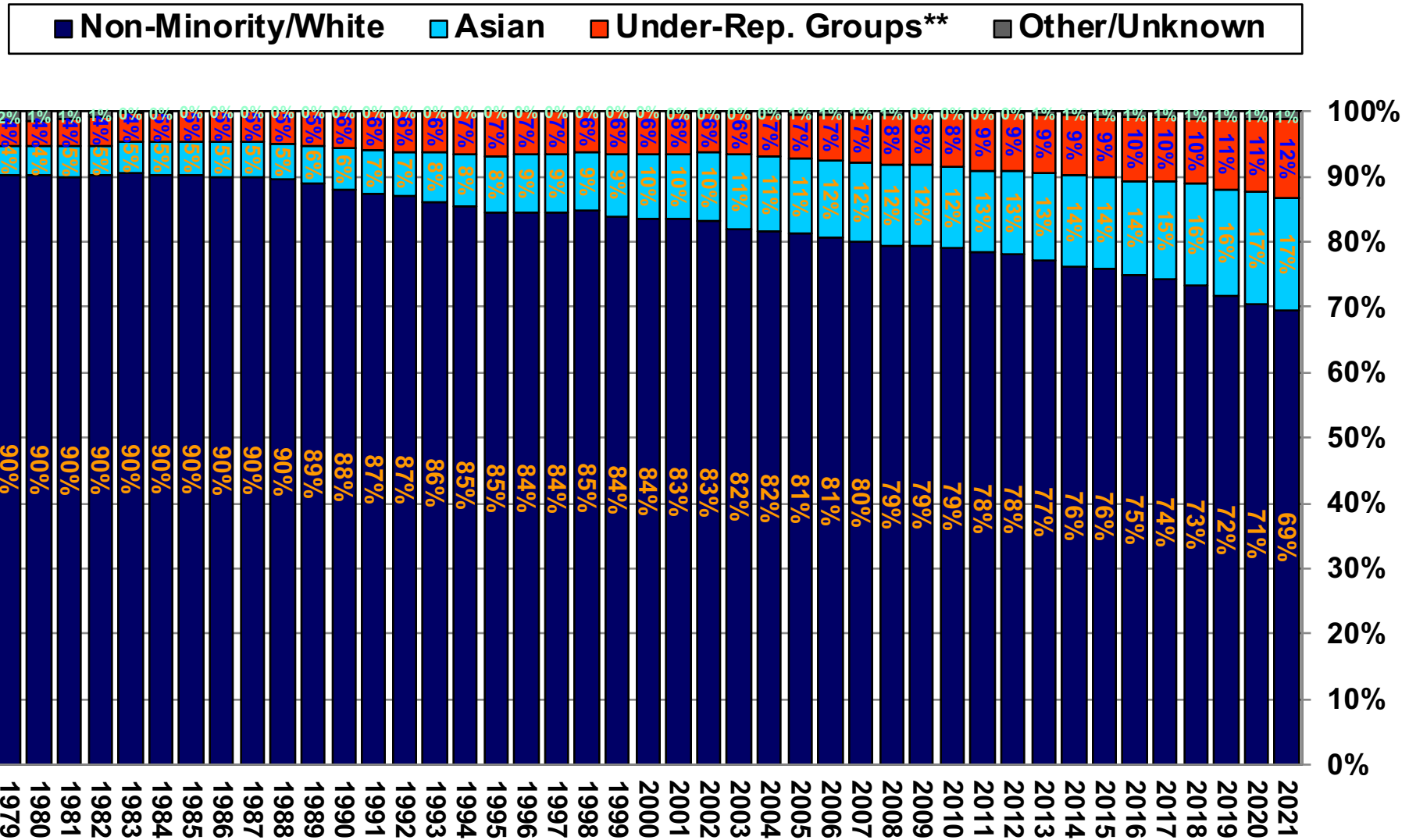


UC Berkeley Faculty Headcount by Race/Ethnicity Groups, AY 1979-80—2021-22*



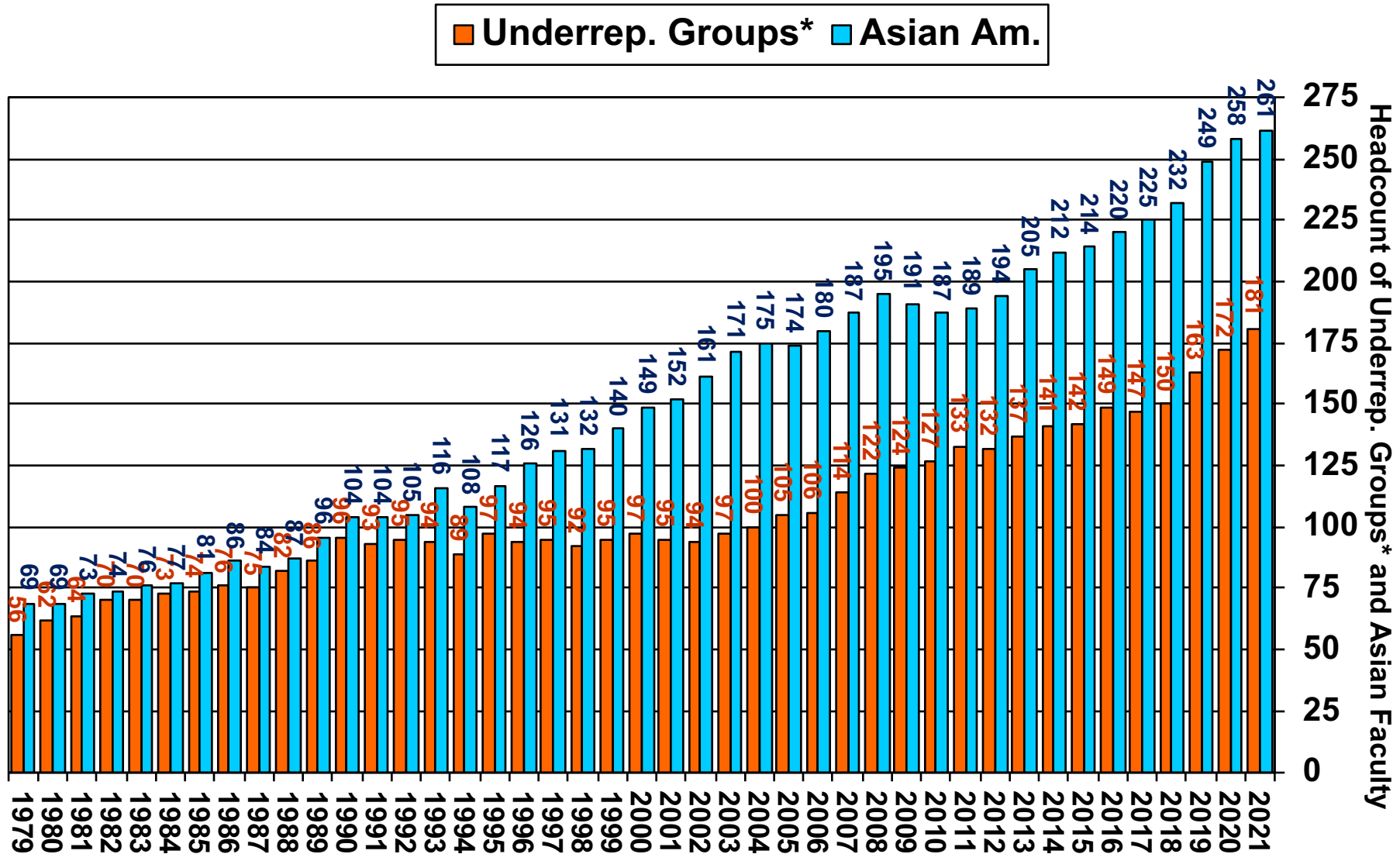
**URG includes African Am., Hispanic, and Native Am.

UC Berkeley Faculty Headcount by Race/Ethnicity Groups, AY 1979-80—2021-22*



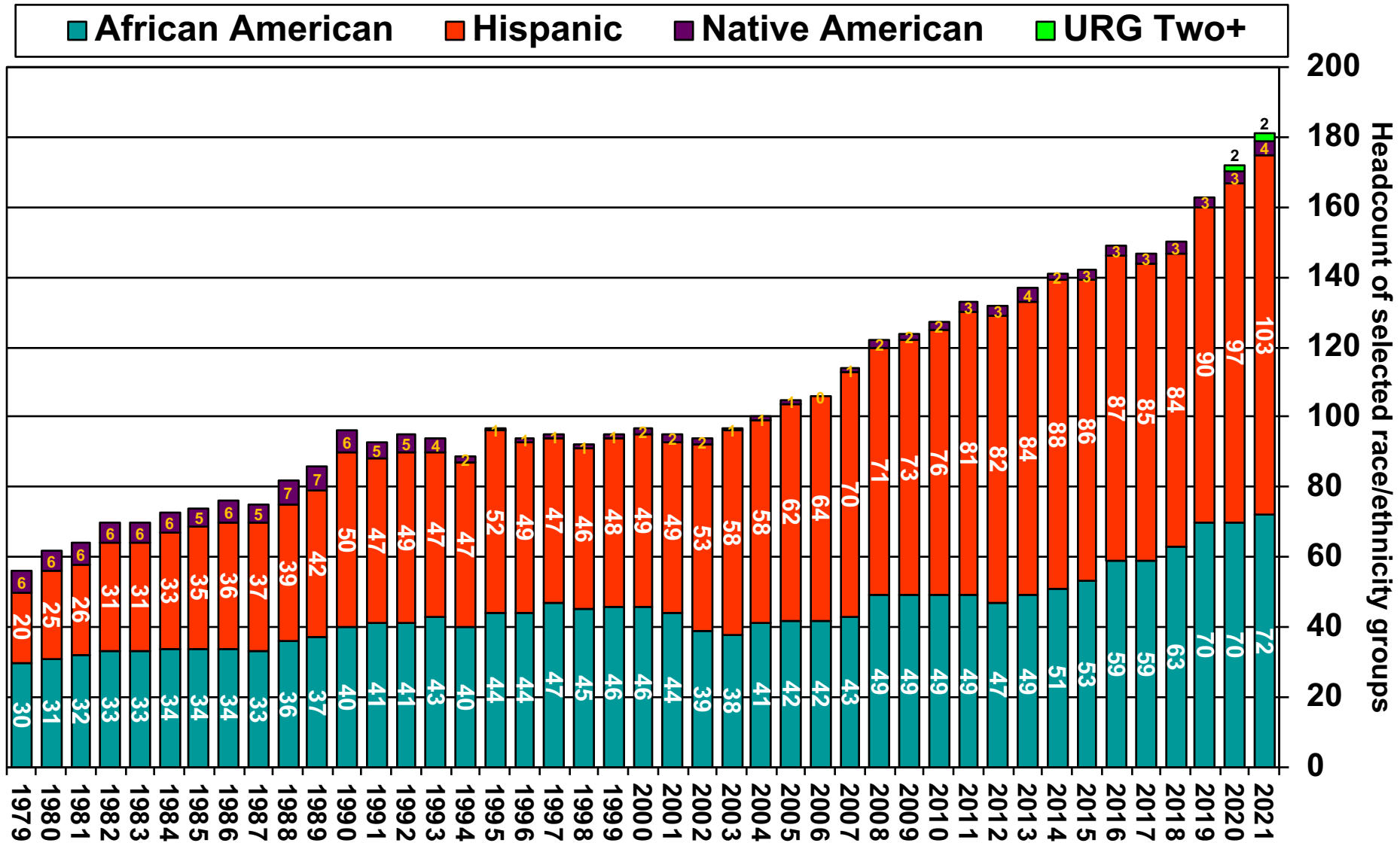
**URG includes African Am., Hispanic, and Native Am.

UC Berkeley Faculty Headcount by Race/Ethnicity: Underrepresented Groups (URG)* and Asian American, AY 1979-80—2021-22**



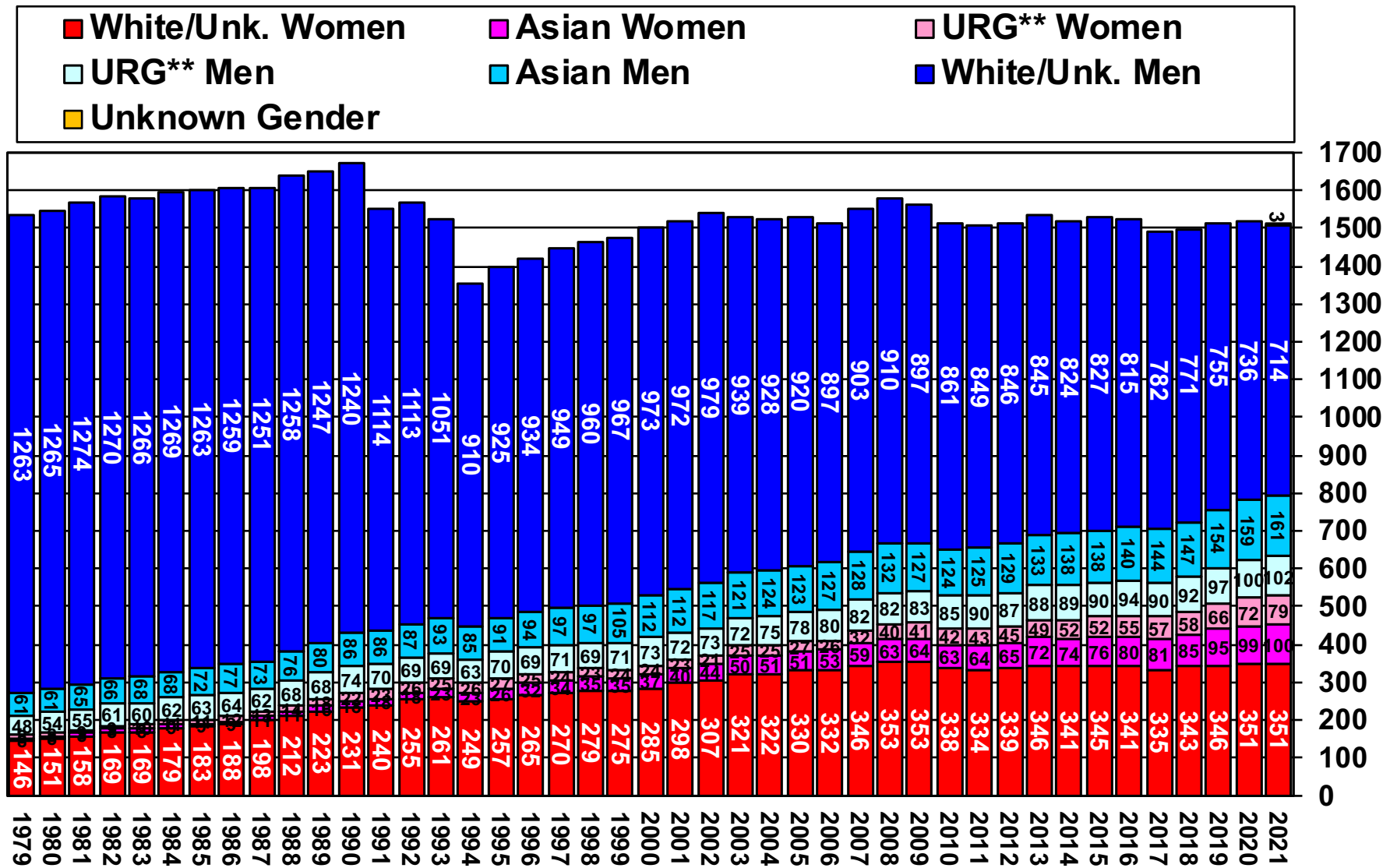
*URG includes African Am., Hispanic, and Native Am.

UC Berkeley Faculty Headcount by Race/Ethnicity: African American, Hispanic, Native American, & URG Two+, AY 1979-80—2021-22*



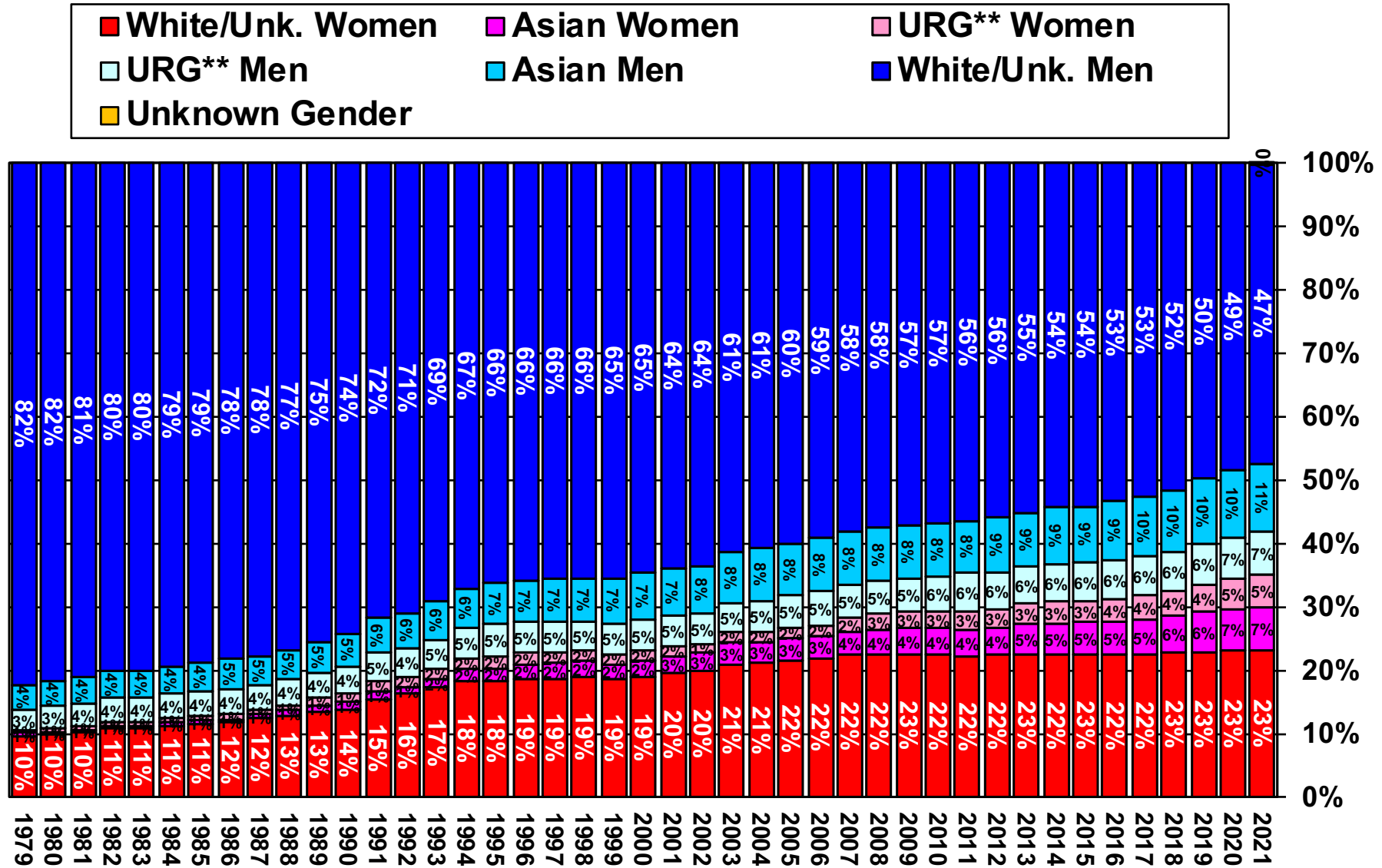
*2021-22 is preliminary, as of August 17, 2021. UCPath

UC Berkeley Faculty Headcount by Gender/Ethnicity, AY 1979-80—2021-22*



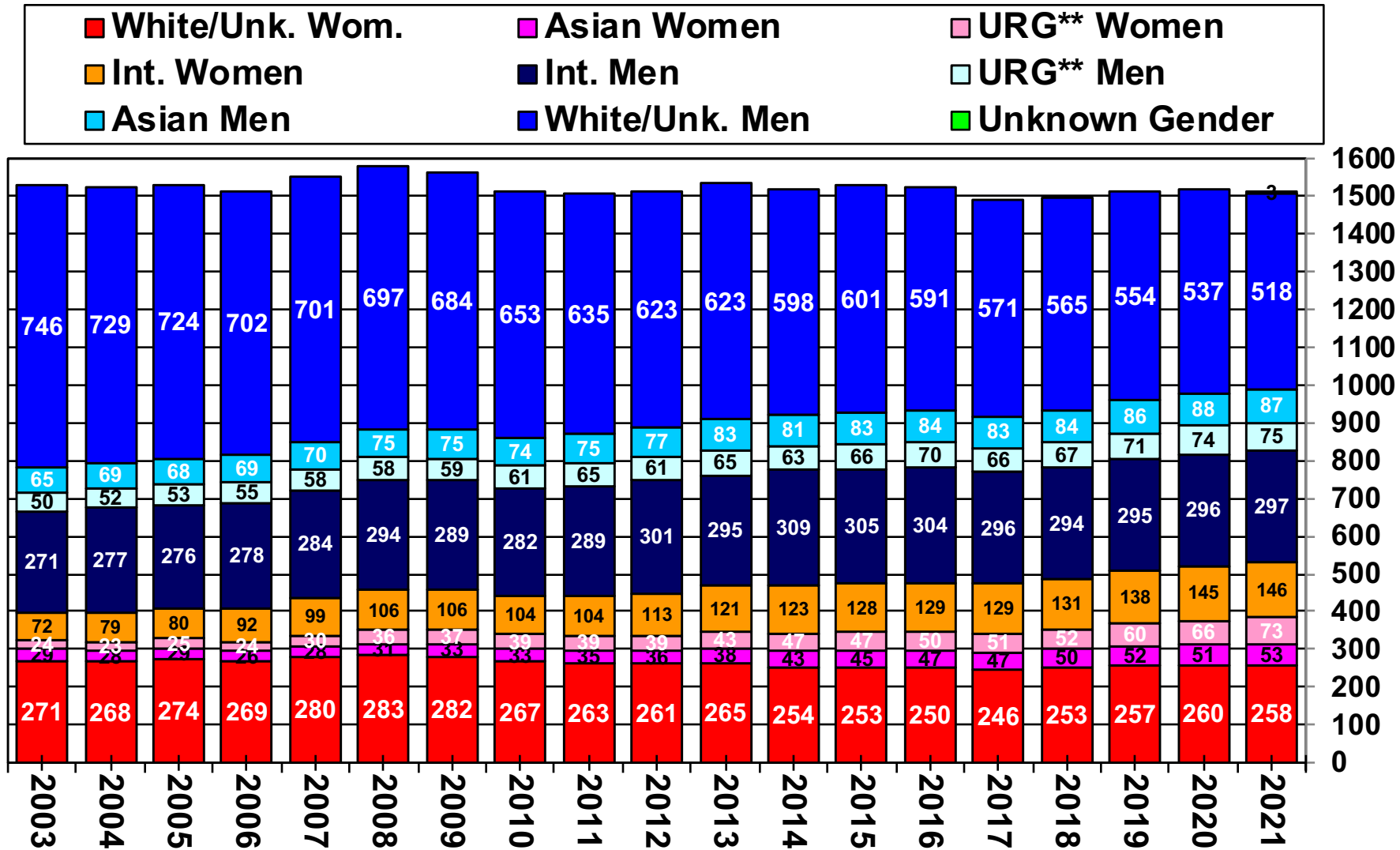
**URG includes African Am., Hispanic, and Native Am.

UC Berkeley Faculty Headcount by Gender/Ethnicity, AY 1979-80—2021-22*



**URG includes African Am., Hispanic, and Native Am.

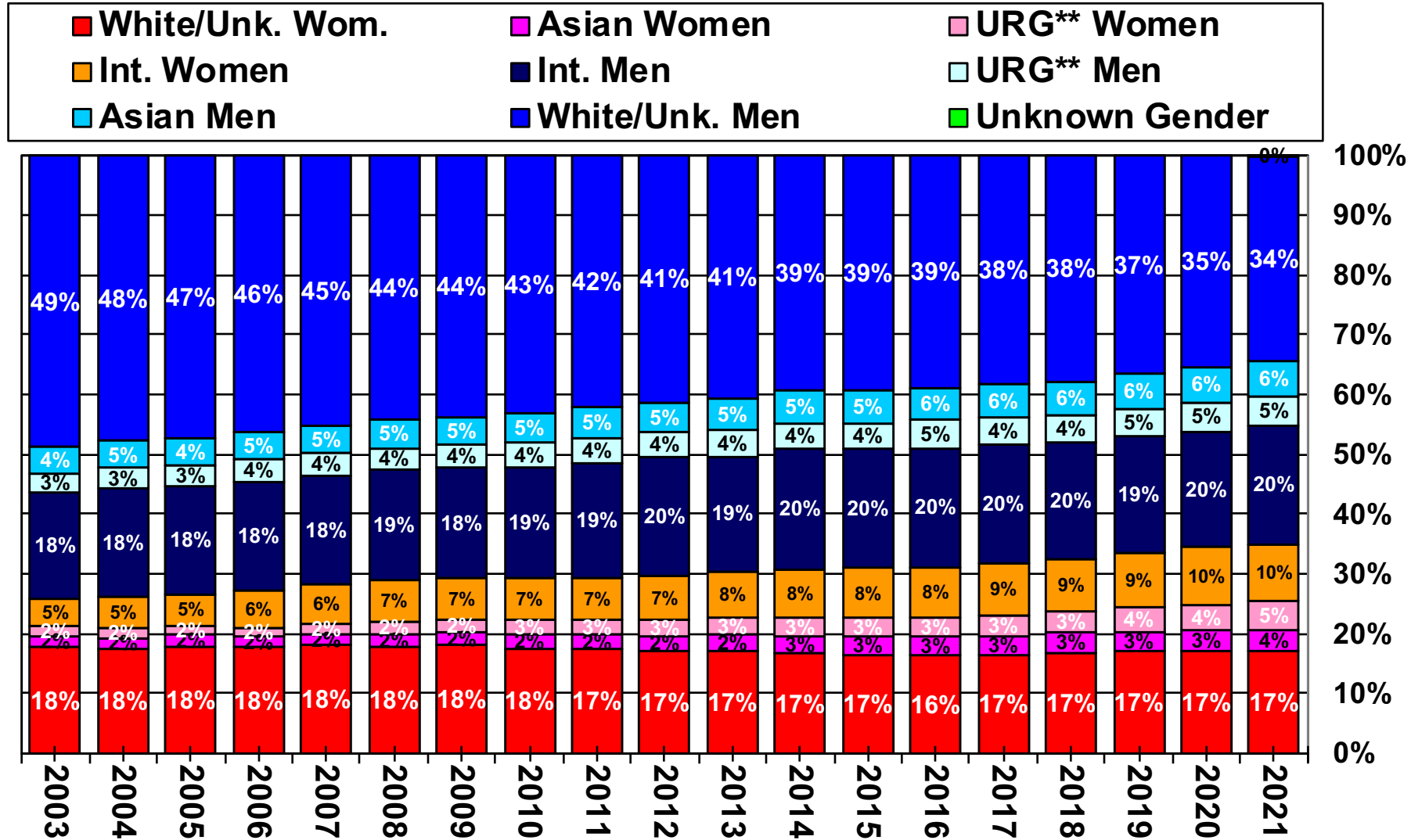
UCB Faculty Headcount by Gender, Ethnicity, and International Status, AY 2003-04—2021-22*



**URG includes African Am., Hispanic, and Native Am.

*2021-22 is preliminary, as of August 17, 2021.
Data drawn from UCPath. Some faculty are missing citizenship data.

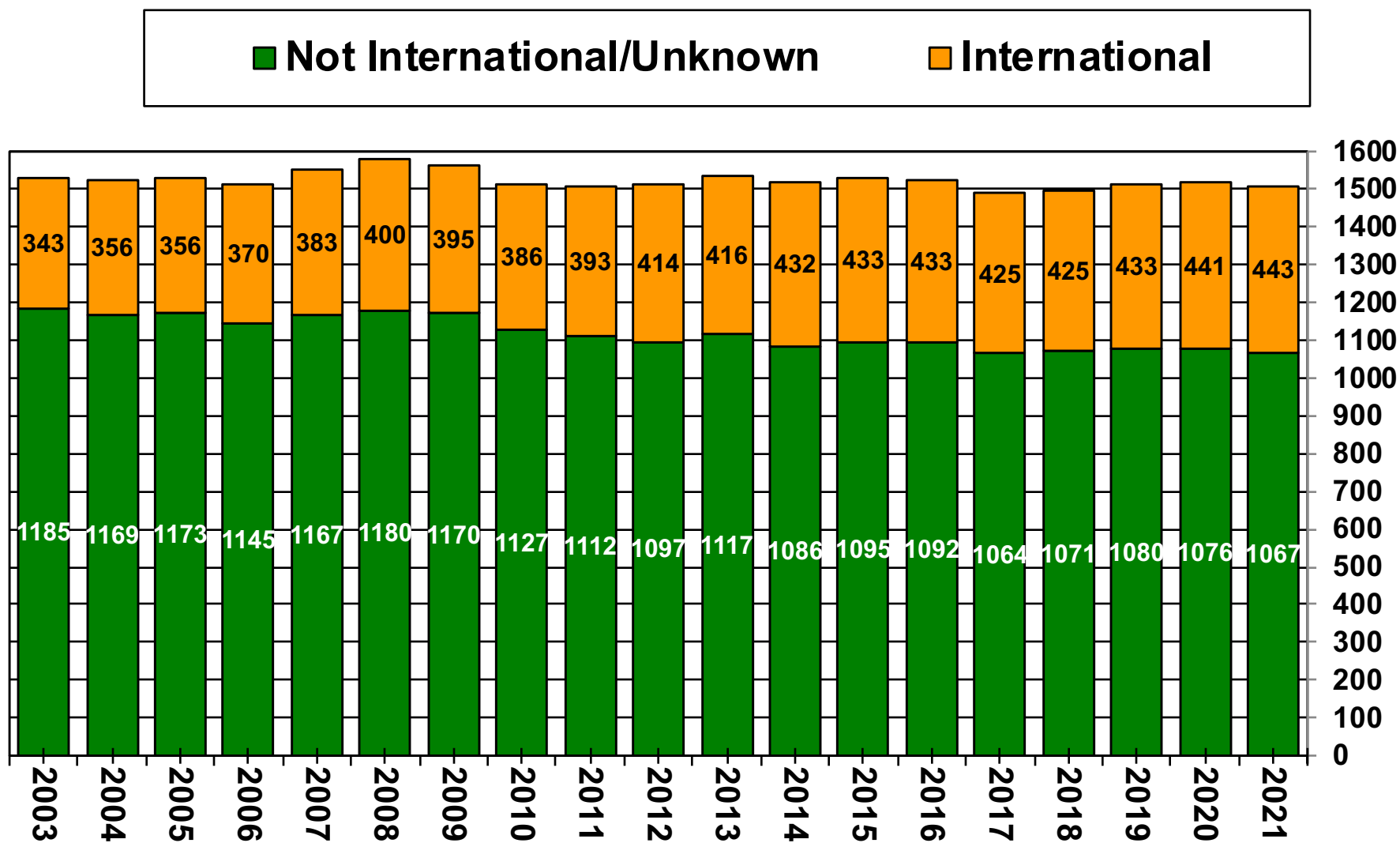
UCB Faculty Headcount by Gender, Ethnicity, and International Status, AY 2003-04—2021-22*



**URG includes African Am., Hispanic, and Native Am.

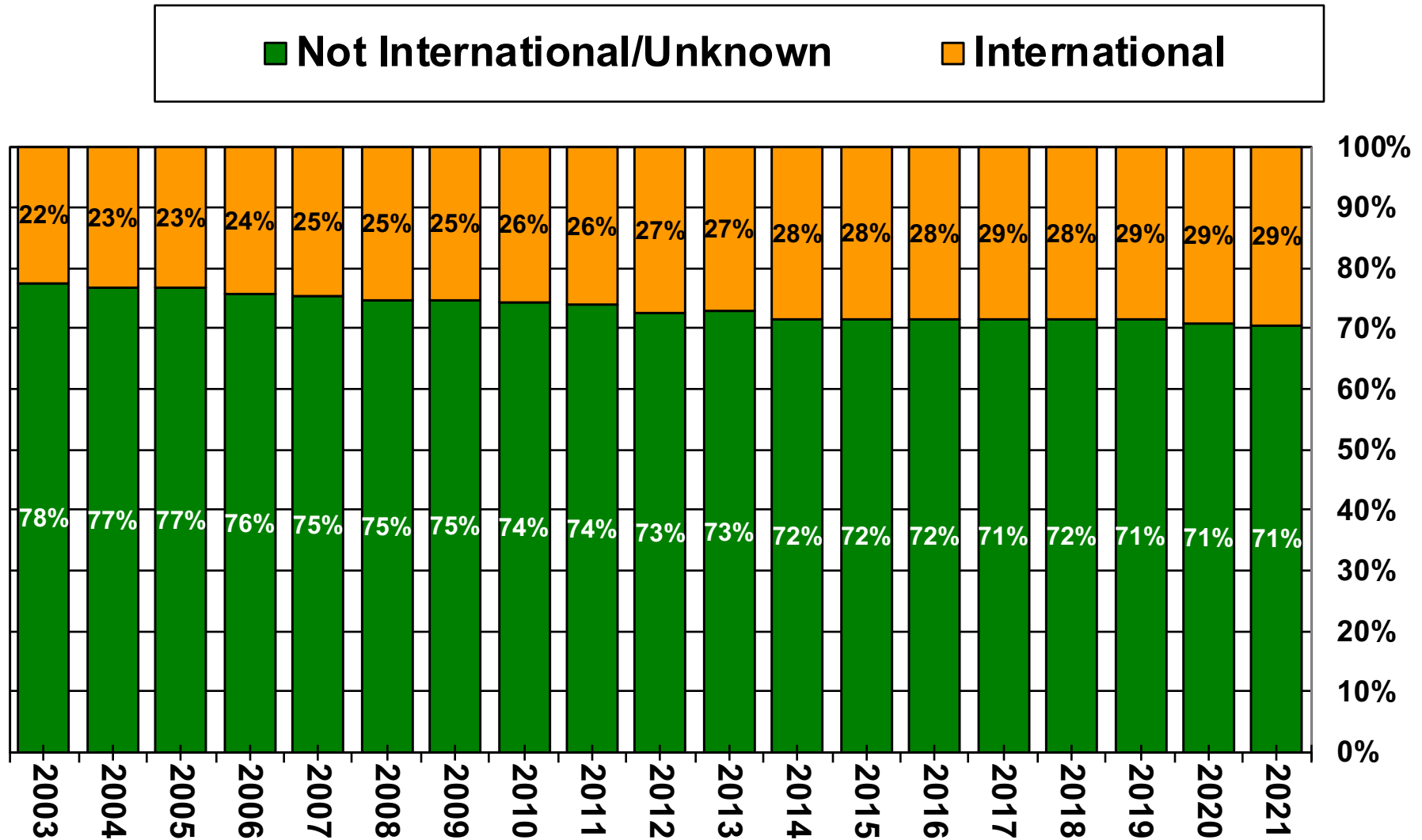
*2021-22 is preliminary, as of August 17, 2021. Data drawn from UCPath. Some faculty are missing citizenship data.

UCB Faculty Headcount by International Status, AY 2003-04—2021-22*



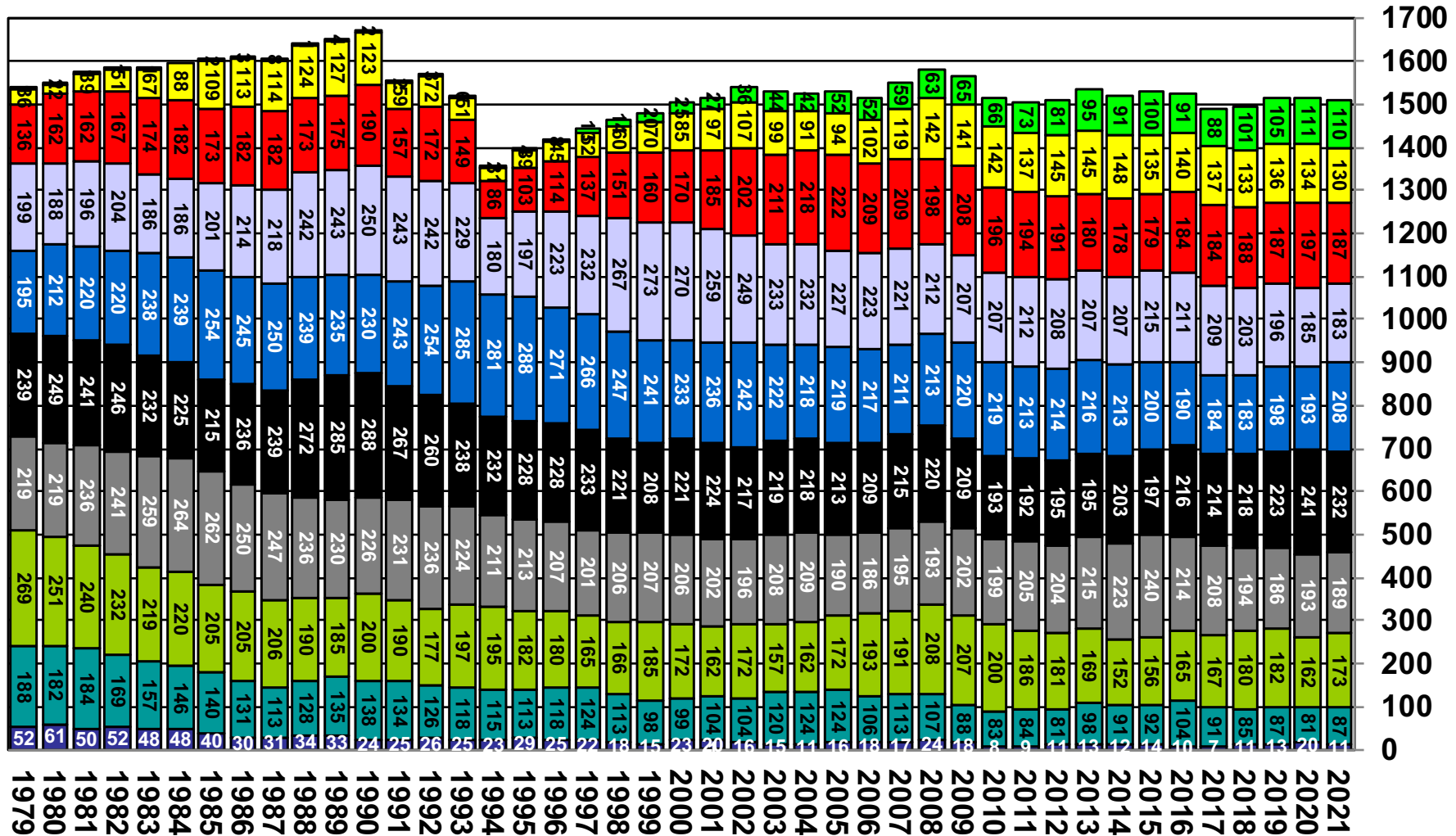
*2021-22 is preliminary, as of August 17, 2021.
Data drawn from UCPath. Some faculty are missing citizenship data.

UCB Faculty Headcount by International Status, AY 2003-04—2021-22*



*2021-22 is preliminary, as of August 17, 2021.
Data drawn from UCPath. Some faculty are missing citizenship data.

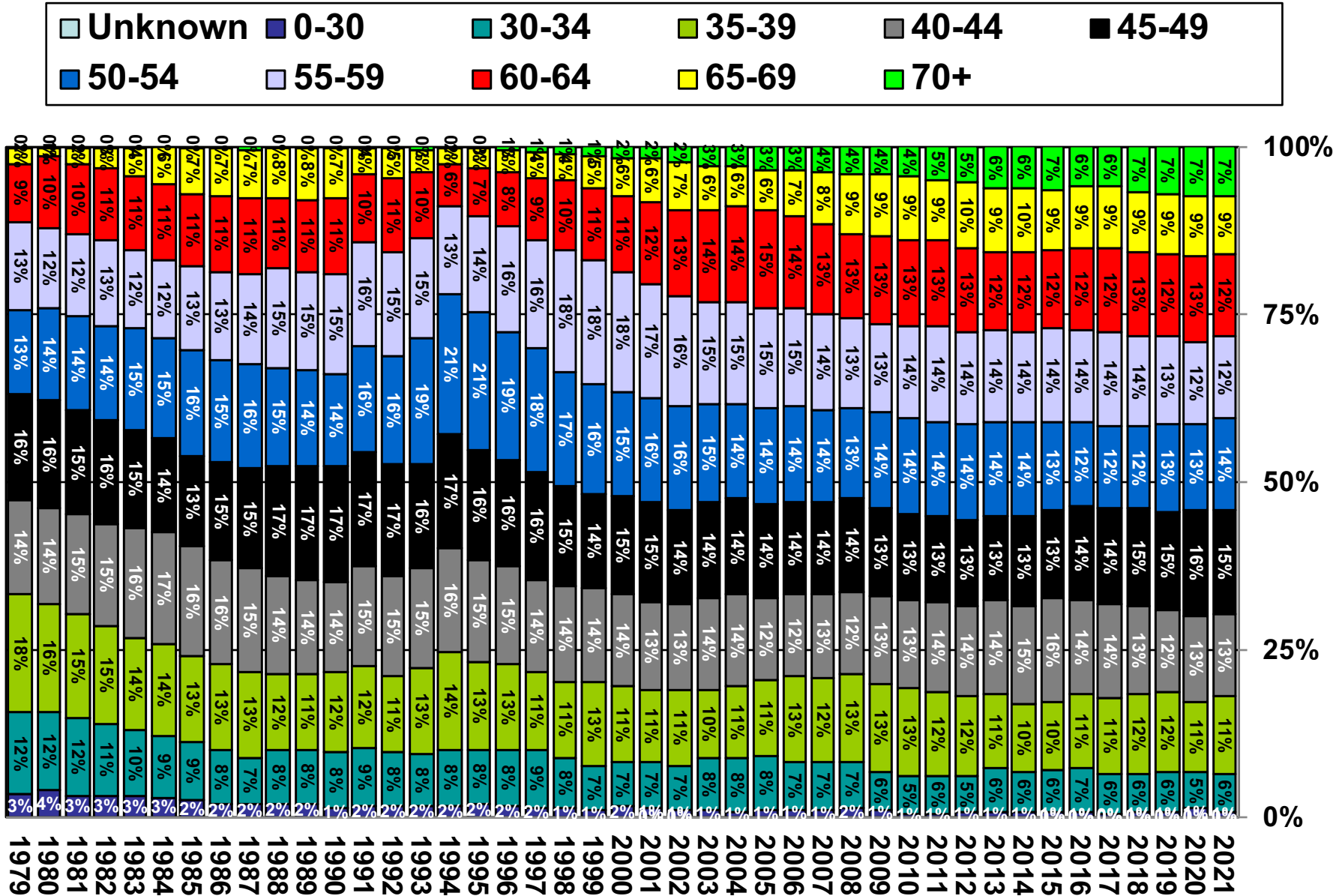
UC Berkeley Faculty Headcount by Age Categories, AY 1979-80—2021-22*



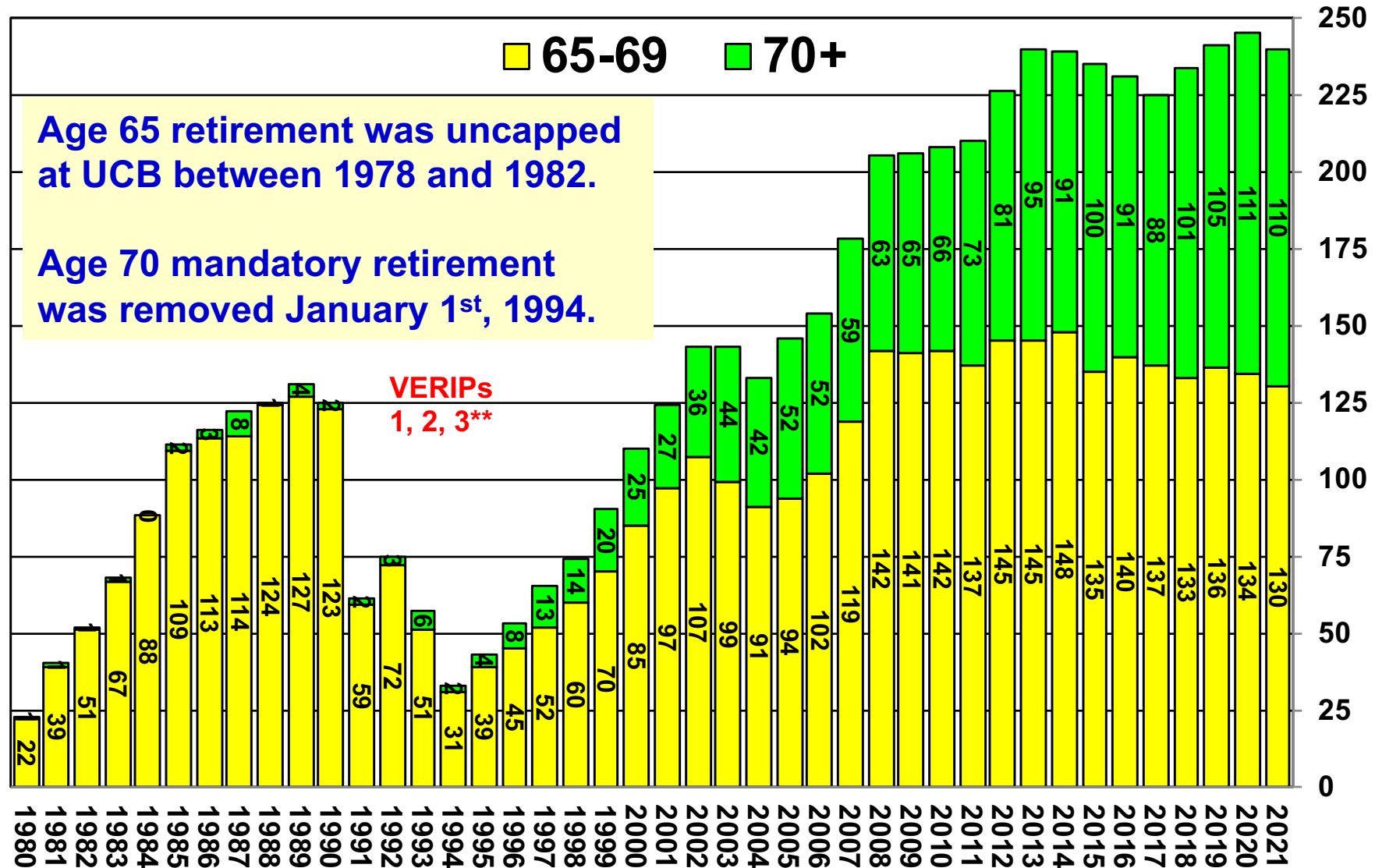
Source: UCB Faculty Personnel Records, AY1979-80—2021-22.

*2021-22 is preliminary, as of August 17, 2021.

UC Berkeley Faculty Headcount by Age Categories, AY 1979-80—2021-22*



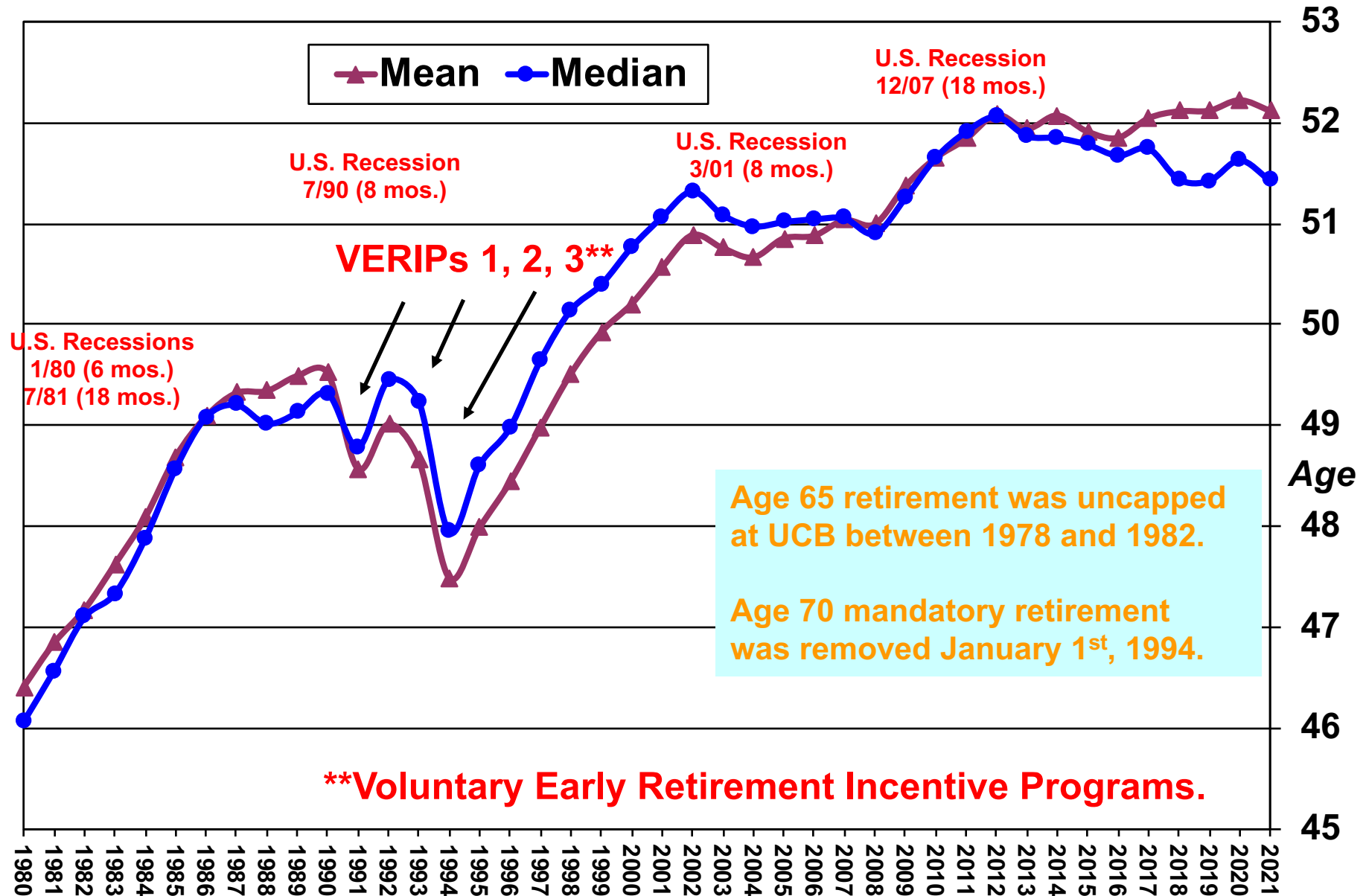
UC Berkeley Faculty Headcount by Selected Age Categories, AY 1980-81—2021-22*



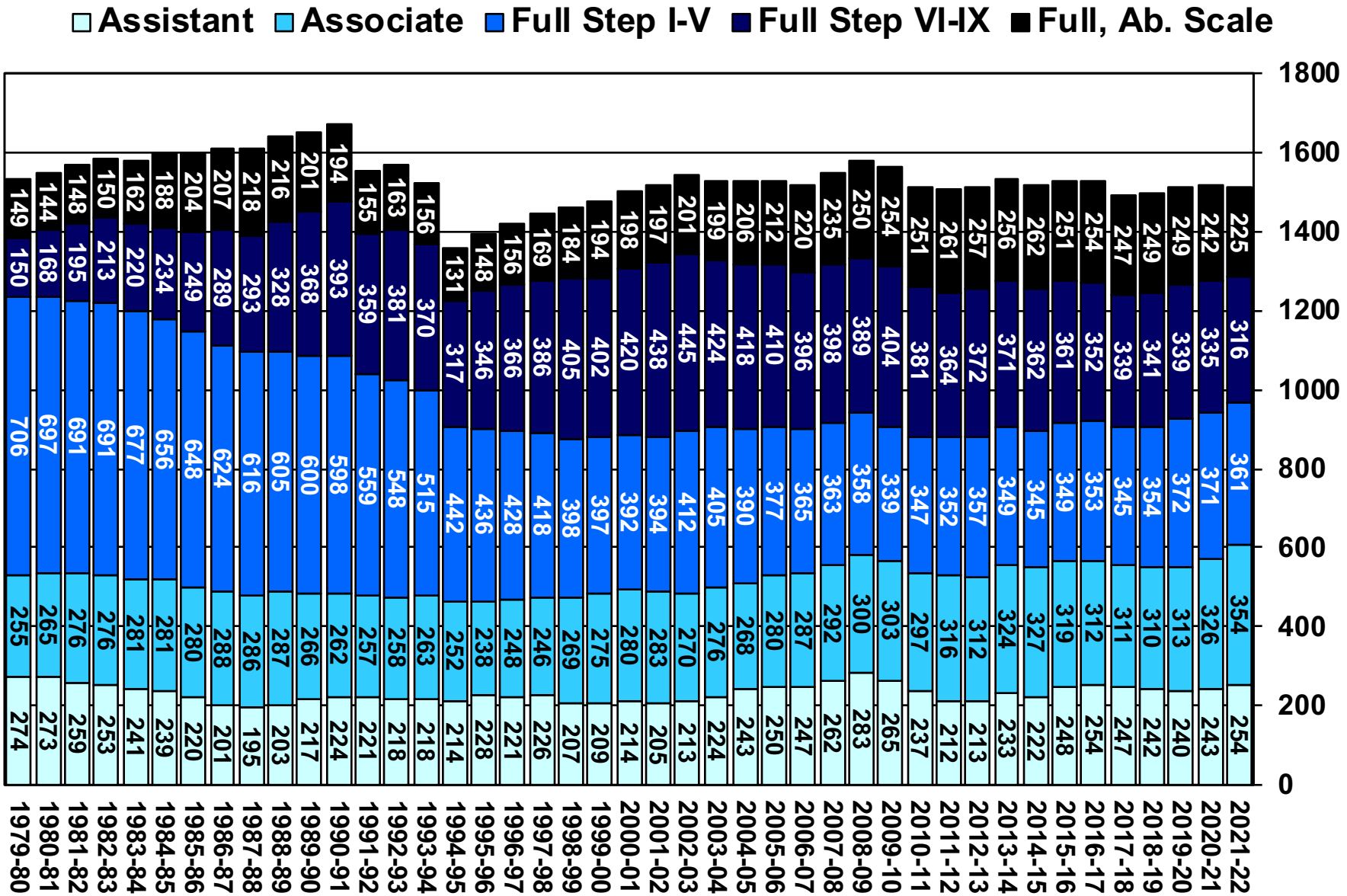
****Voluntary Early Retirement Incentive Programs.**

*2021-22 is preliminary, as of August 17, 2021.

Mean and Median Age of UC Berkeley Faculty, AY 1980-81—2021-22*

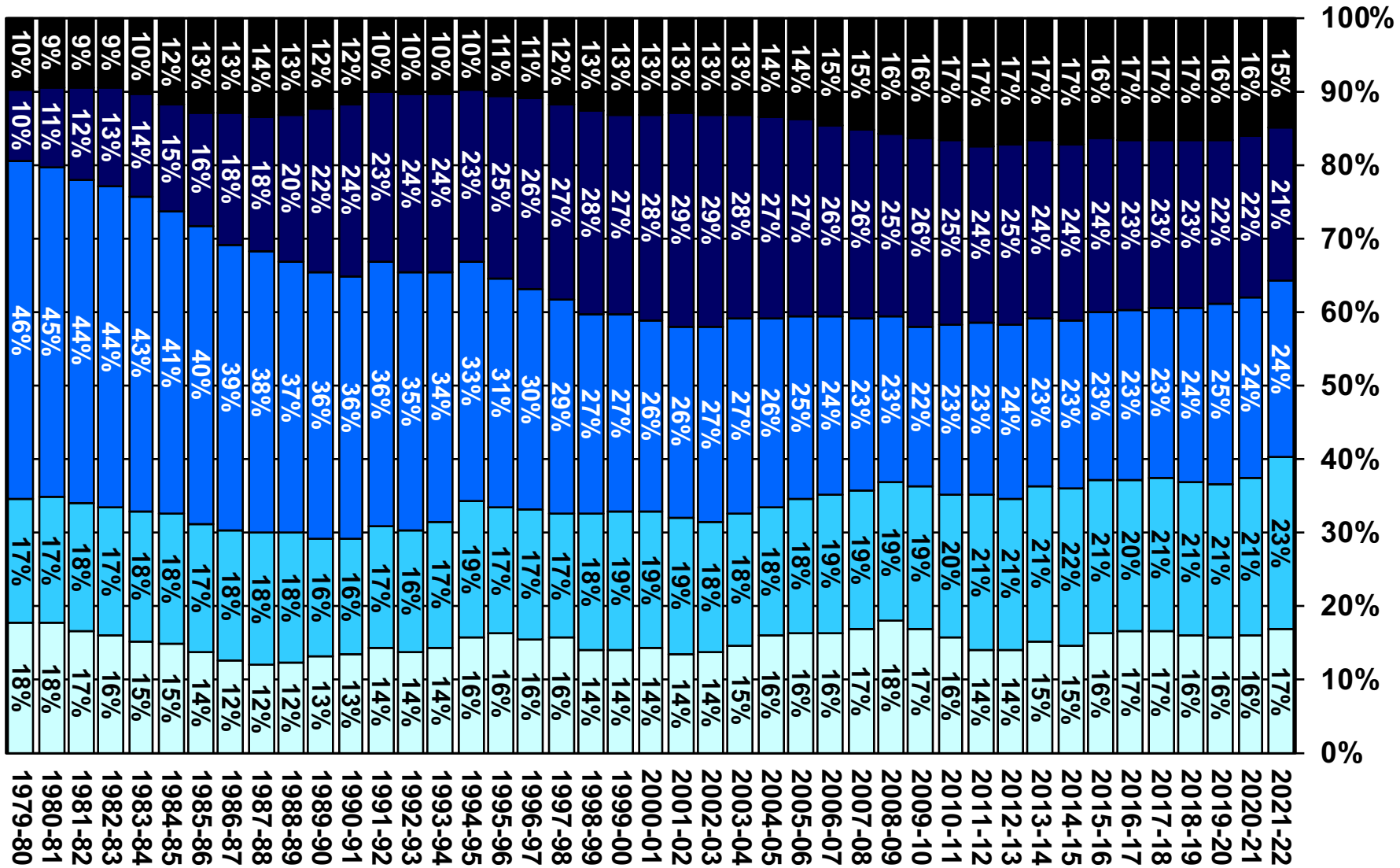


UC Berkeley Faculty Headcount by Rank/Step, AY 1980-81—2021-22*



UC Berkeley Faculty Headcount by Rank/Step, AY 1980-81—2021-22*

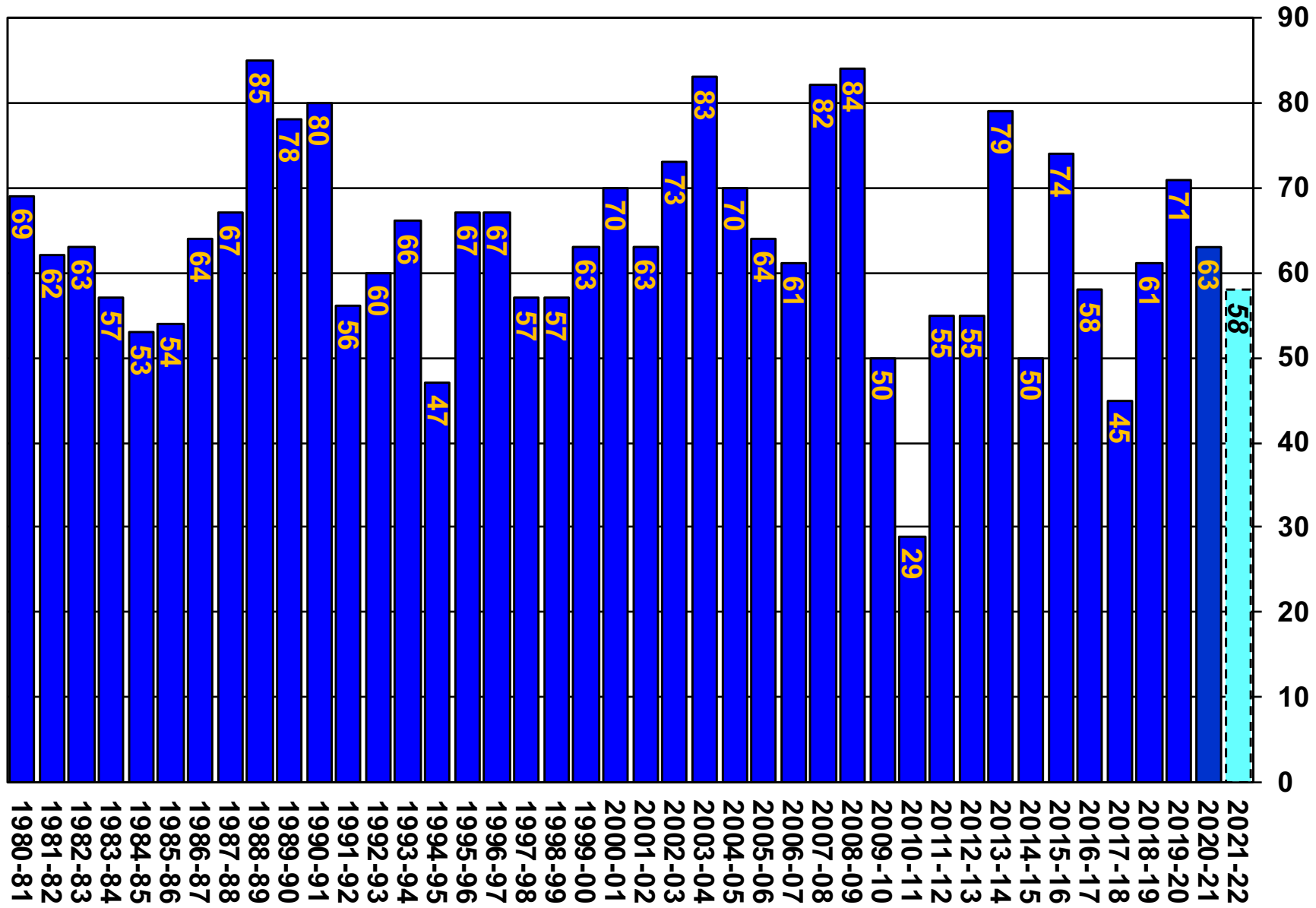
■ Assistant
 ■ Associate
 ■ Full Step I-V
 ■ Full Step VI-IX
 ■ Full, Ab. Scale



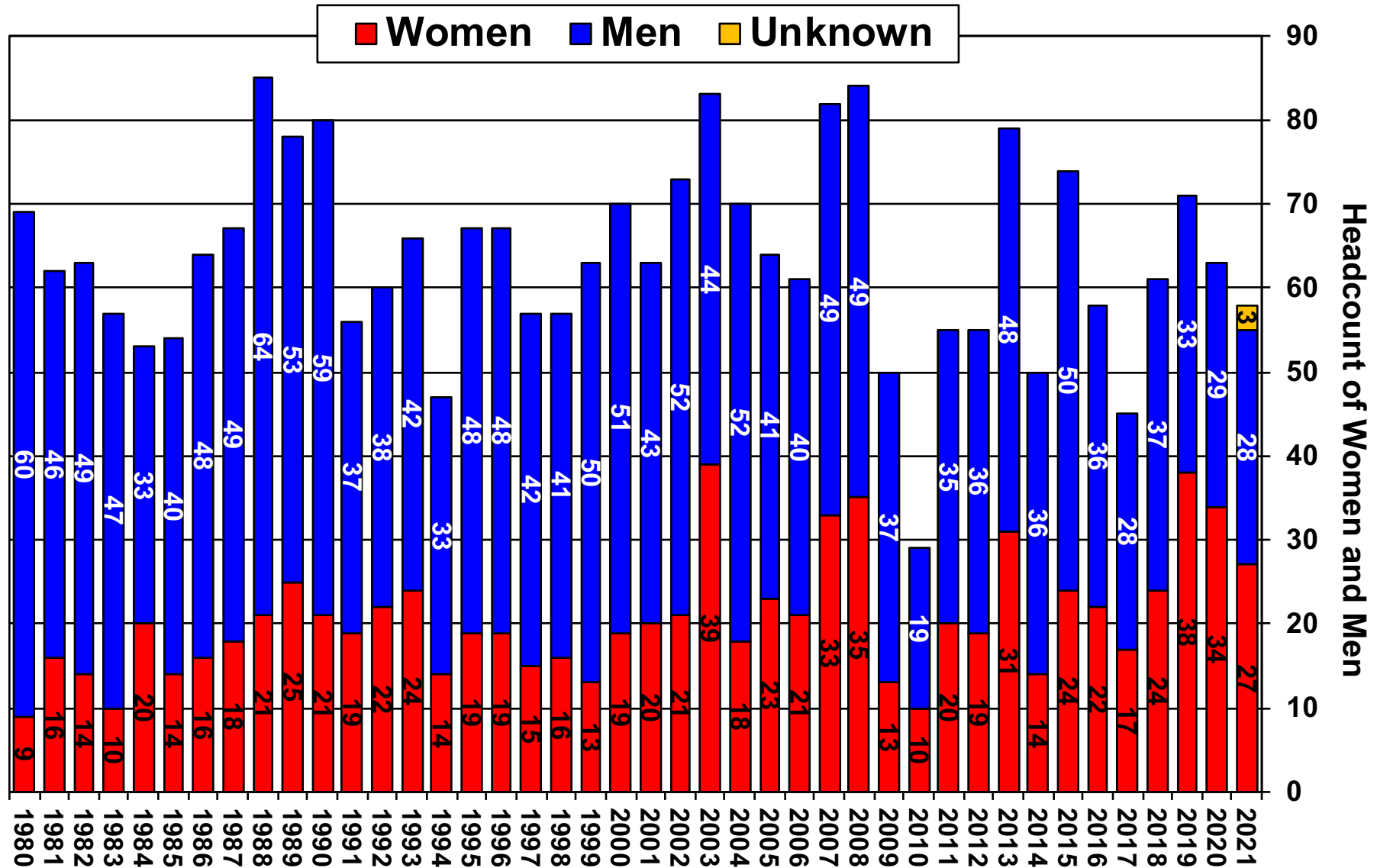
New UCB Faculty by Selected Demographic Characteristics

1980-81—2021-22

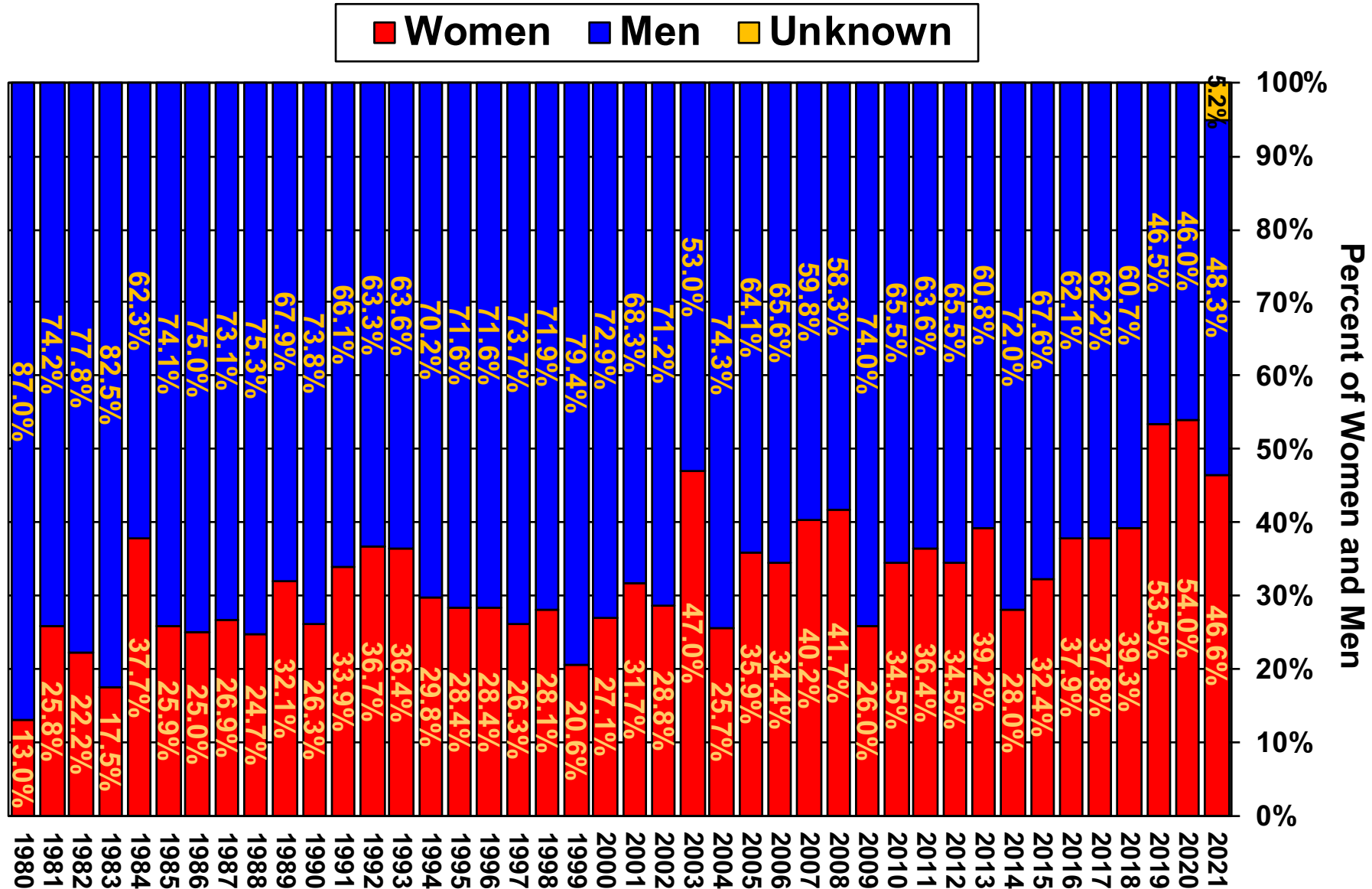
UC Berkeley New Faculty Headcount, AY 1980-81—2021-22*



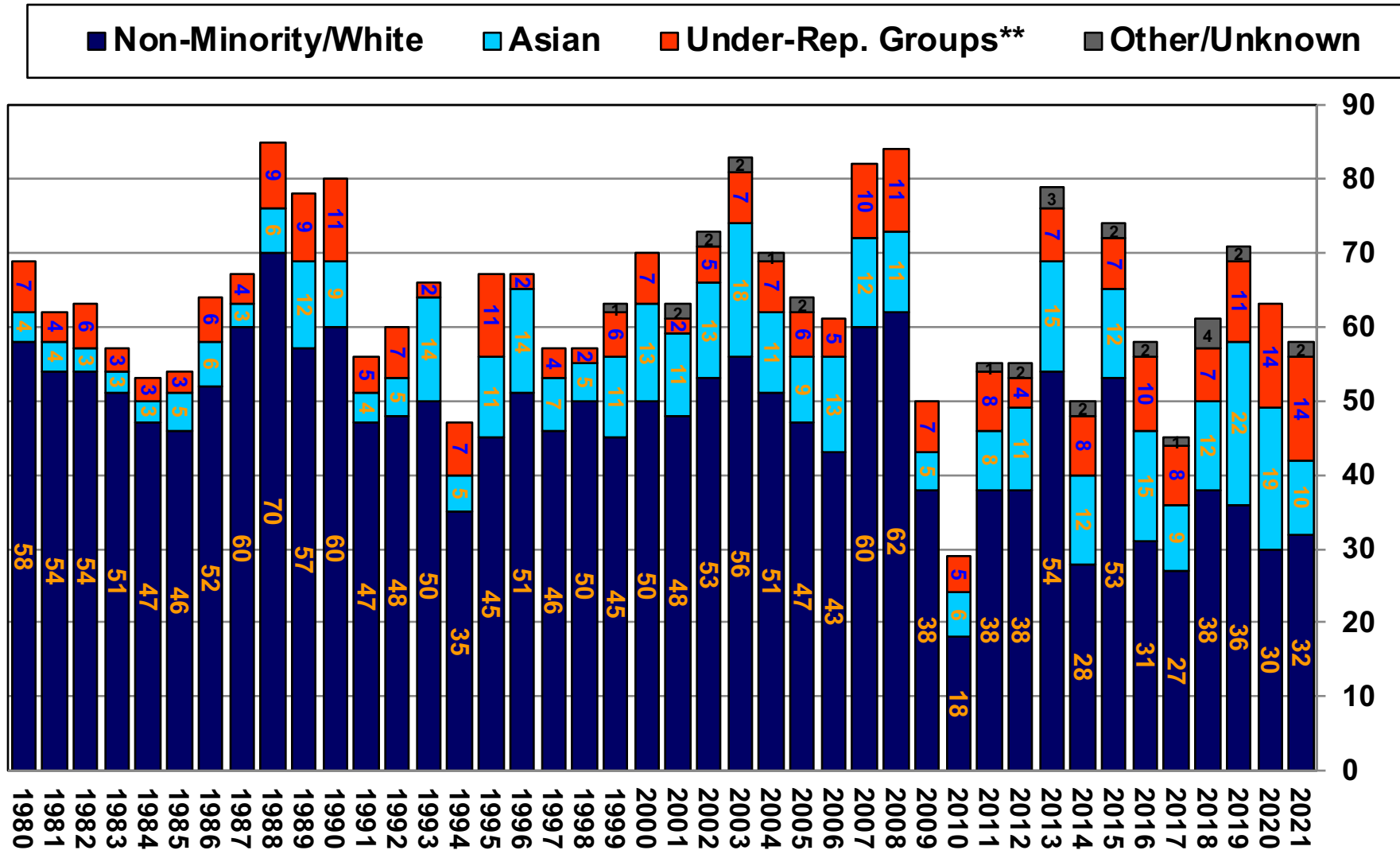
UC Berkeley New Faculty Headcount by Gender, AY 1980-81—2021-22*



UC Berkeley New Faculty Headcount by Gender, AY 1980-81—2021-22*

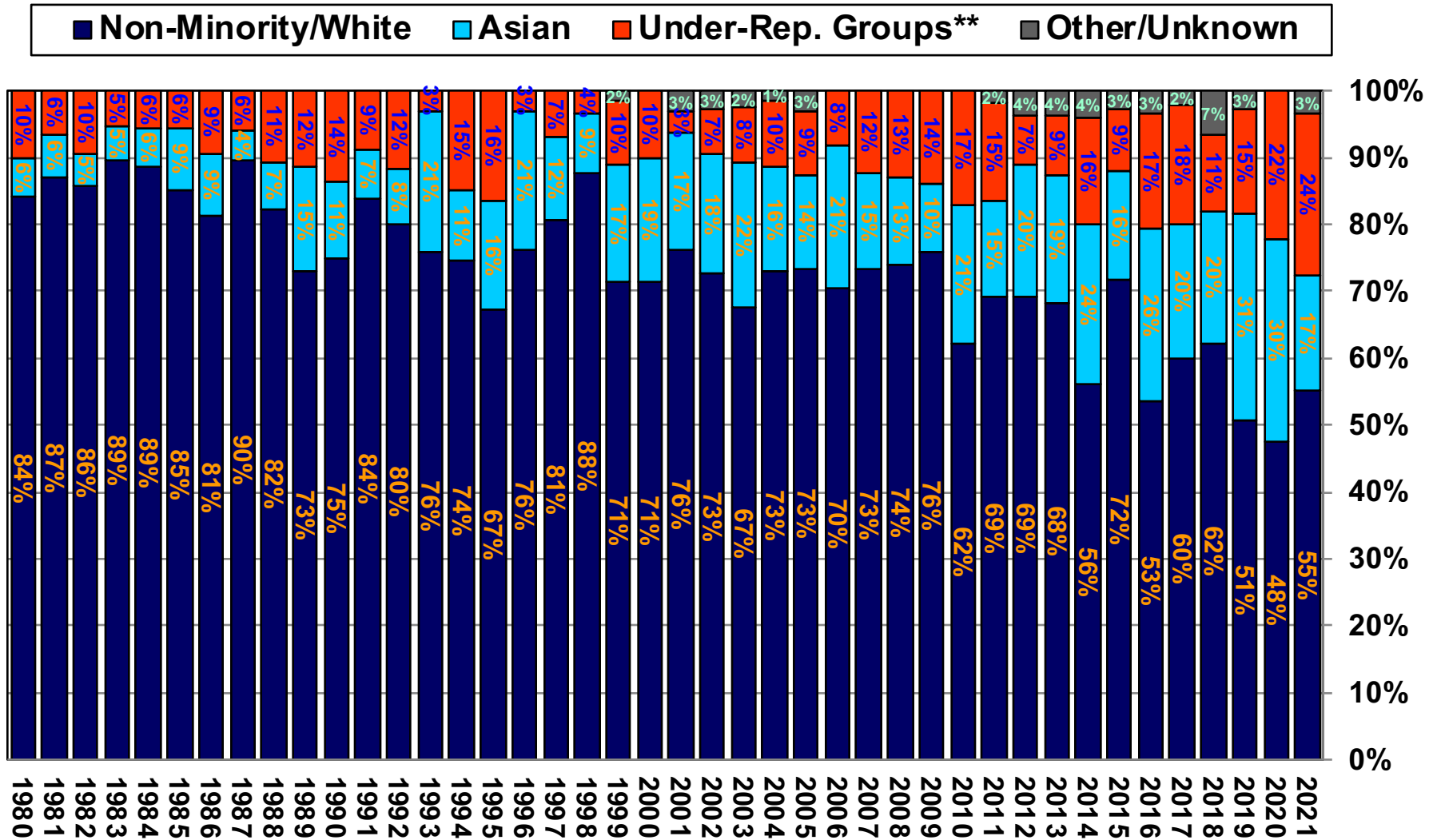


UC Berkeley New Faculty Headcount by Race/Ethnicity Groups, AY 1980-81—2021-22*



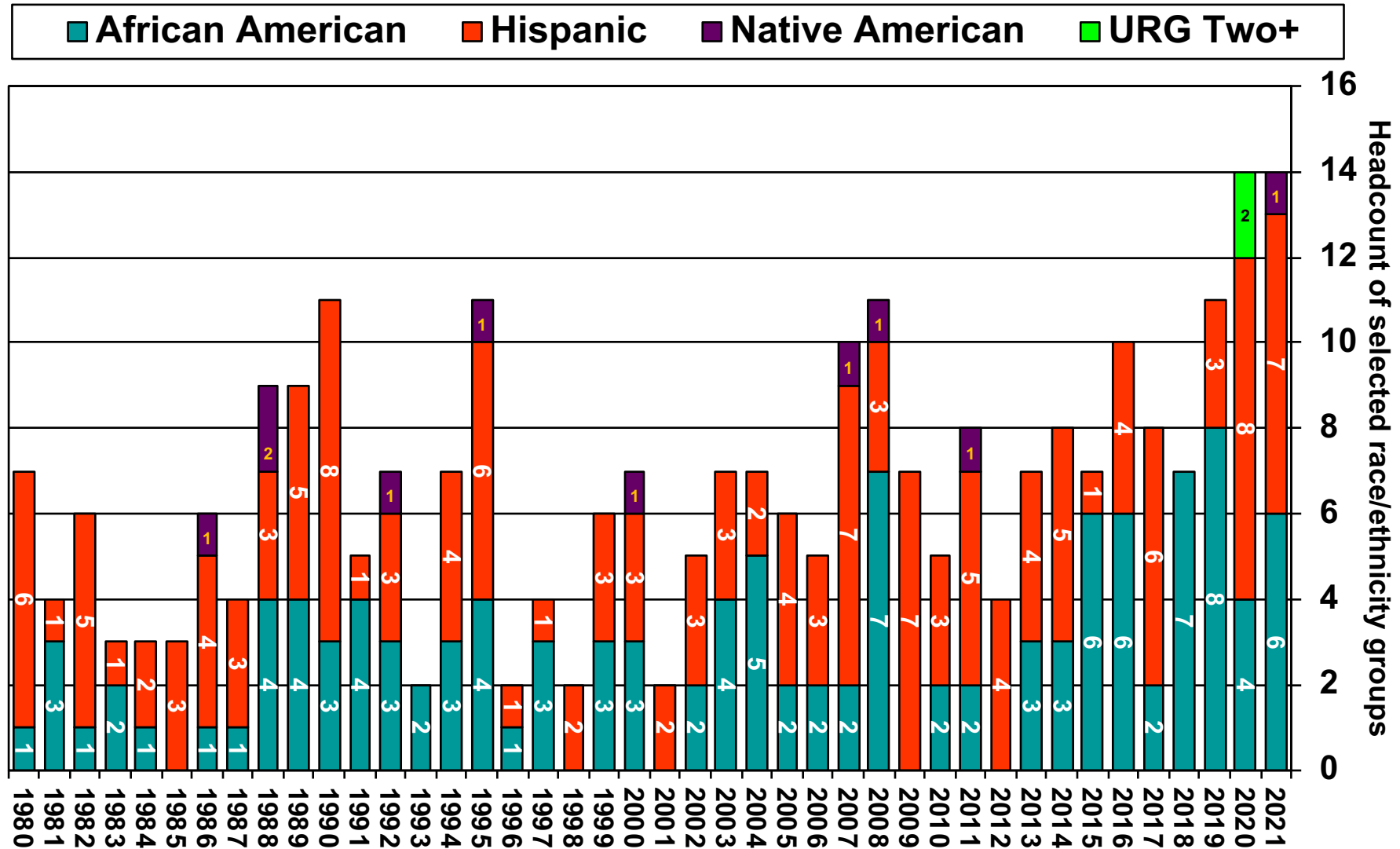
**URG includes African Am., Hispanic, and Native Am.

UC Berkeley New Faculty Headcount by Race/Ethnicity Groups, AY 1980-81—2021-22*



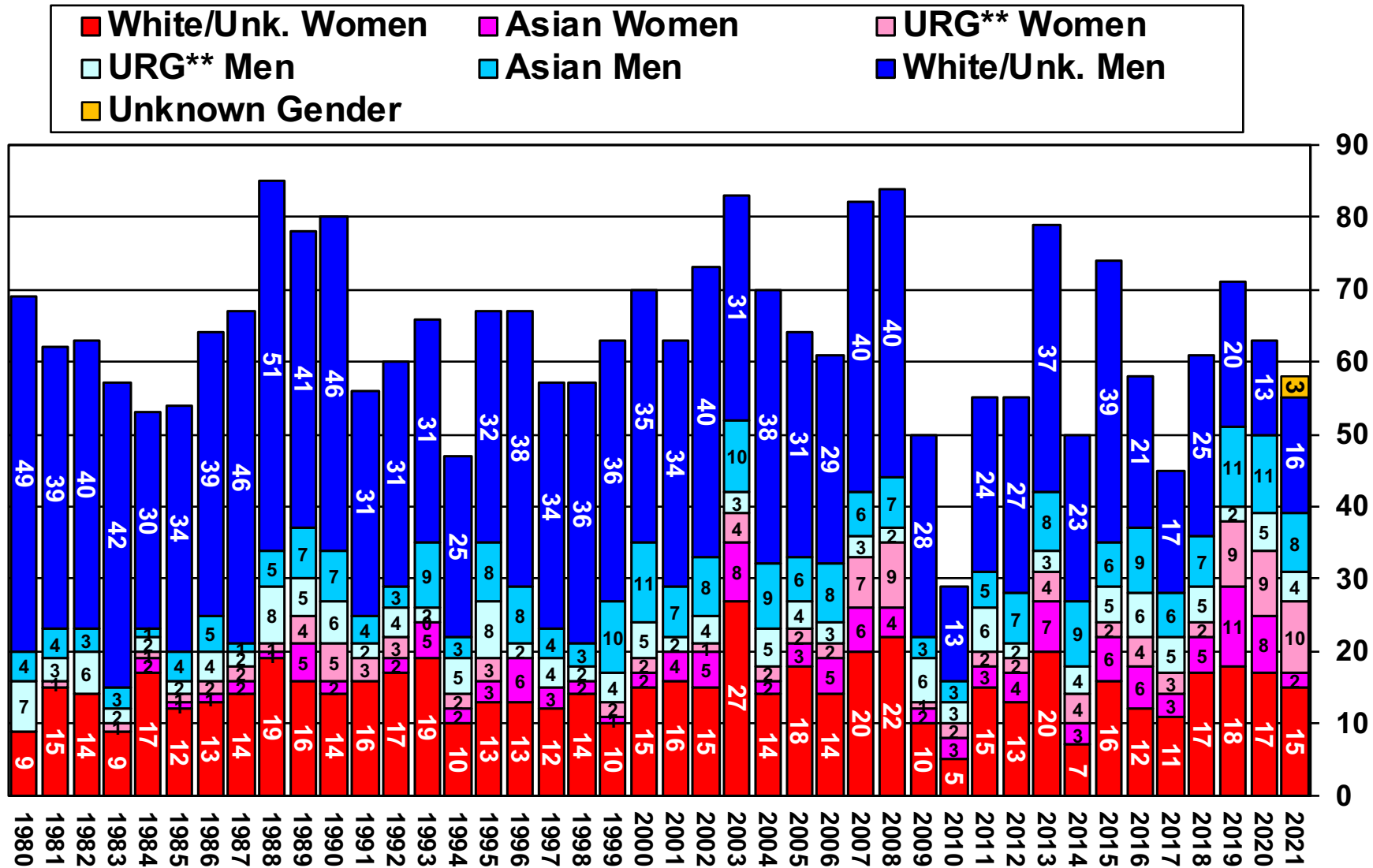
**URG includes African Am., Hispanic, and Native Am.

UC Berkeley New Faculty Headcount by Race/Ethnicity: African American, Hispanic, Native American, & URG Two+ AY 1980-81—2021-22*



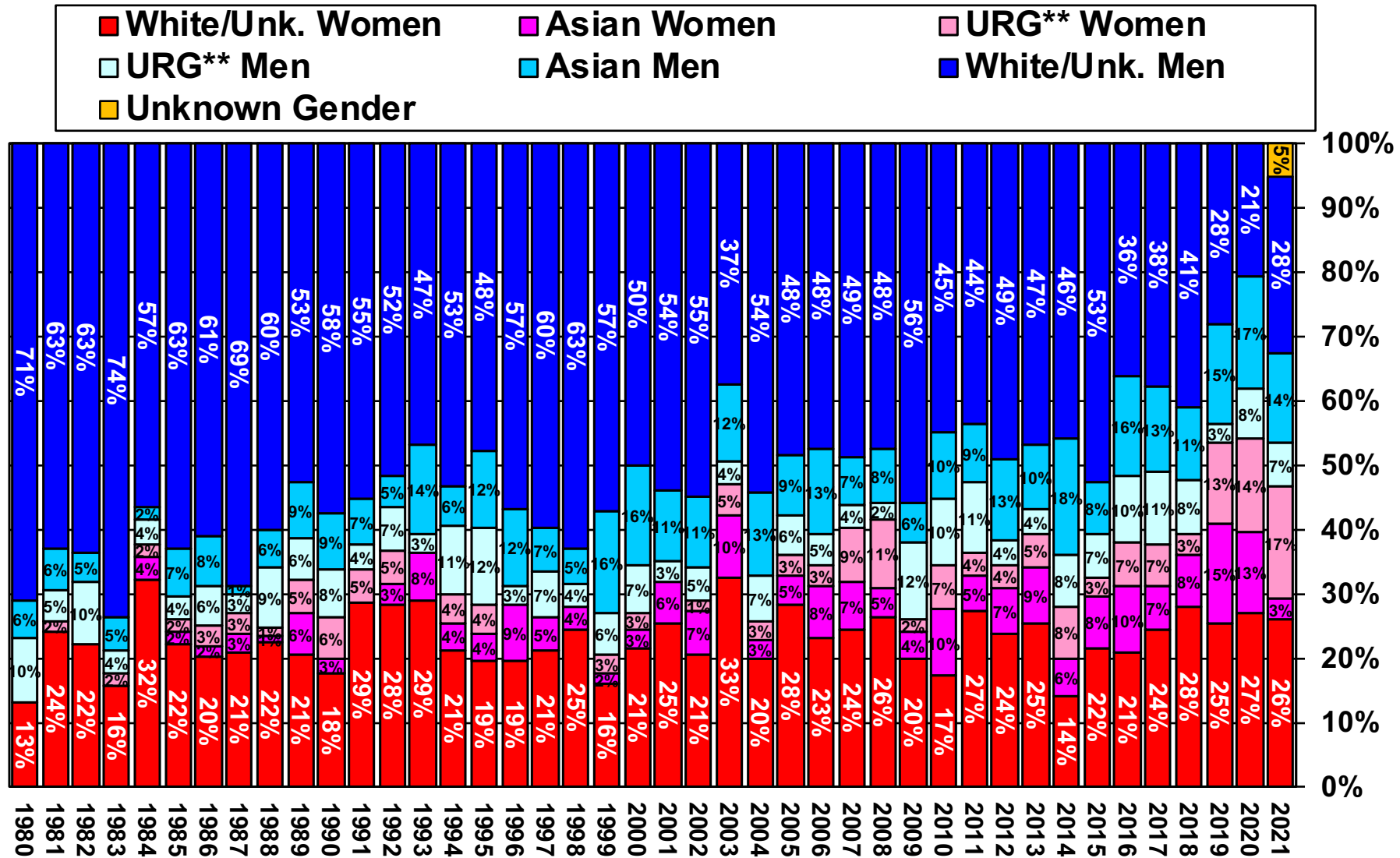
*2021-22 is preliminary, as of August 17, 2021.
UCPath data (2019-21) allows a URG two or more race/ethnicity self identification.

UC Berkeley New Faculty Headcount by Gender/Ethnicity, AY 1980-81—2021-22*



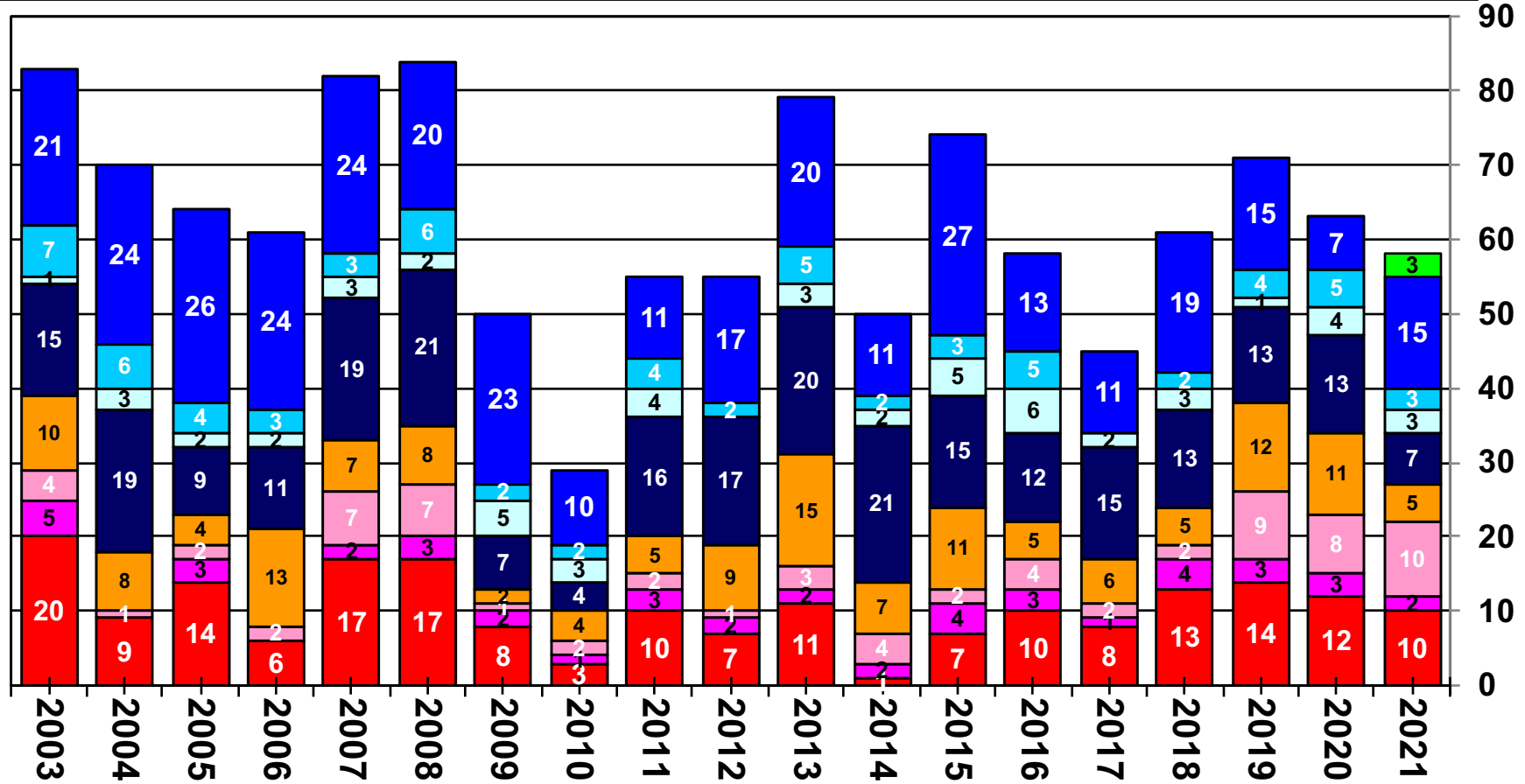
**URG includes African Am., Hispanic, and Native Am.

UC Berkeley New Faculty Headcount by Gender/Ethnicity, AY 1980-81—2021-22*



**URG includes African Am., Hispanic, and Native Am.

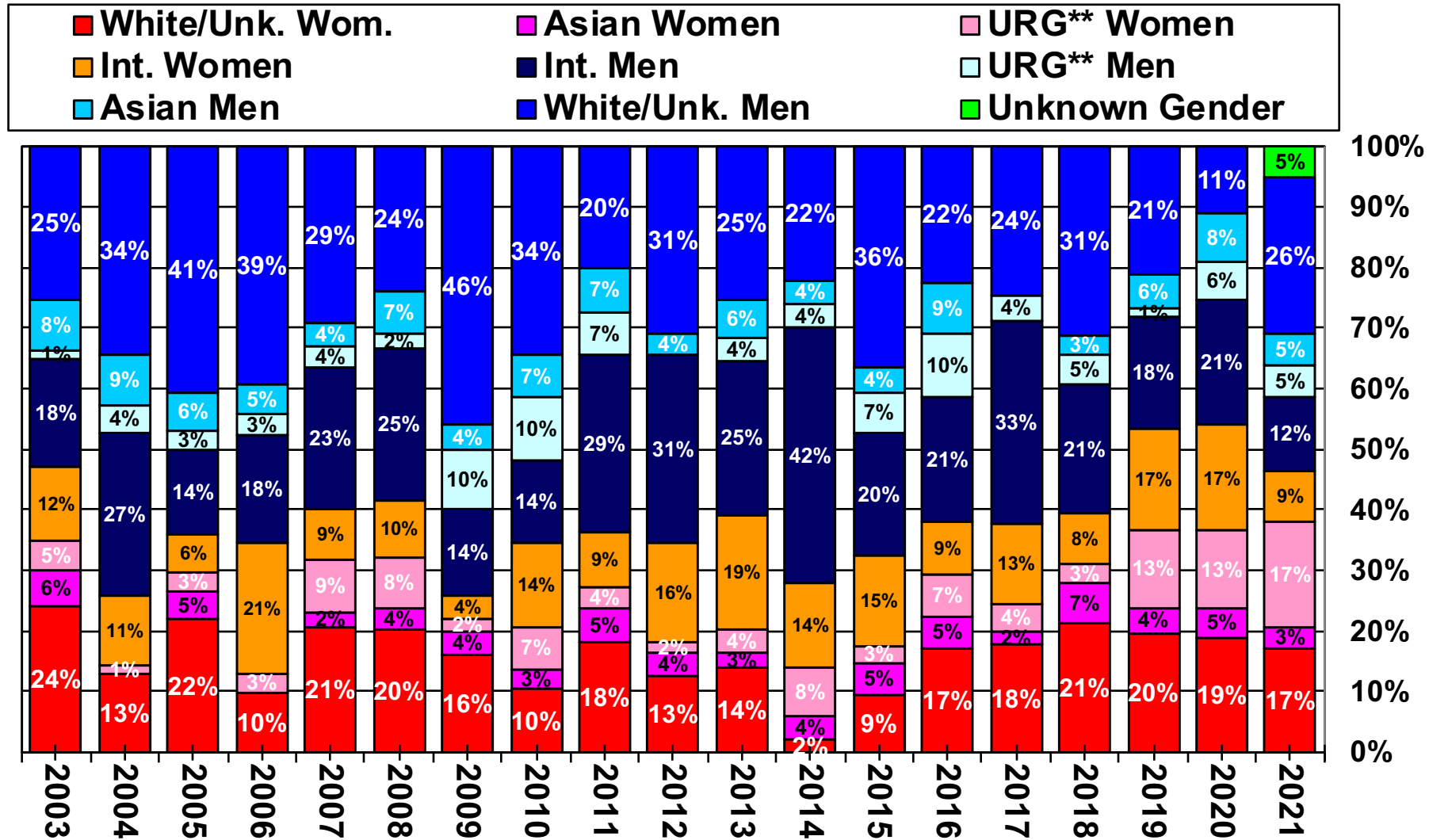
UCB New Faculty Headcount by Gender, Ethnicity, and International Status, AY 2003-04—2021-22*



**URG includes African Am., Hispanic, and Native Am.

*2021-22 is preliminary, as of August 17, 2021.
 Data drawn from UCPath (2019-21) is missing some citizenship status data.

UCB New Faculty Headcount by Gender, Ethnicity, and International Status, AY 2003-04—2021-22*

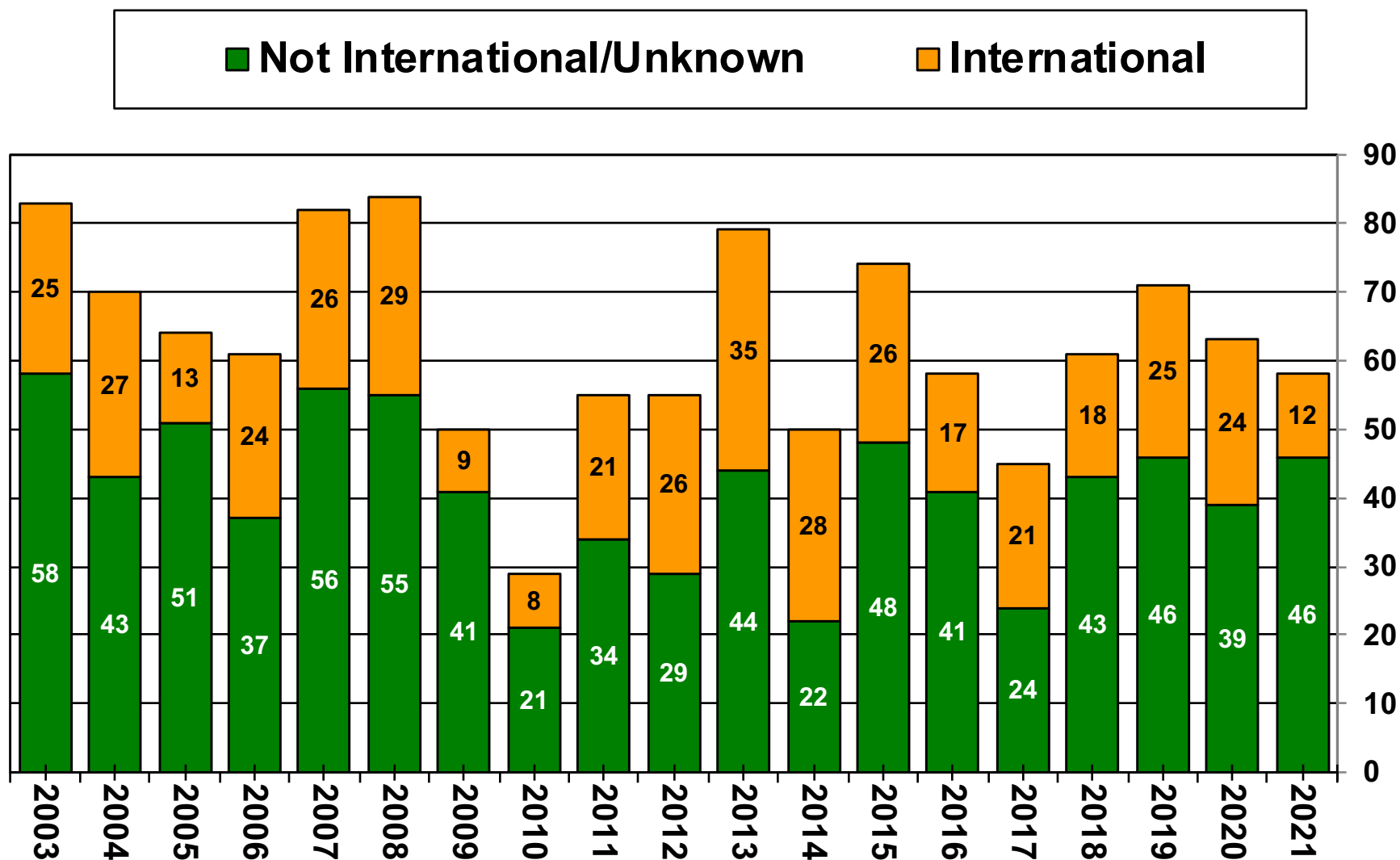


**URG includes African Am., Hispanic, and Native Am.

*2021-22 is preliminary, as of August 17, 2021.

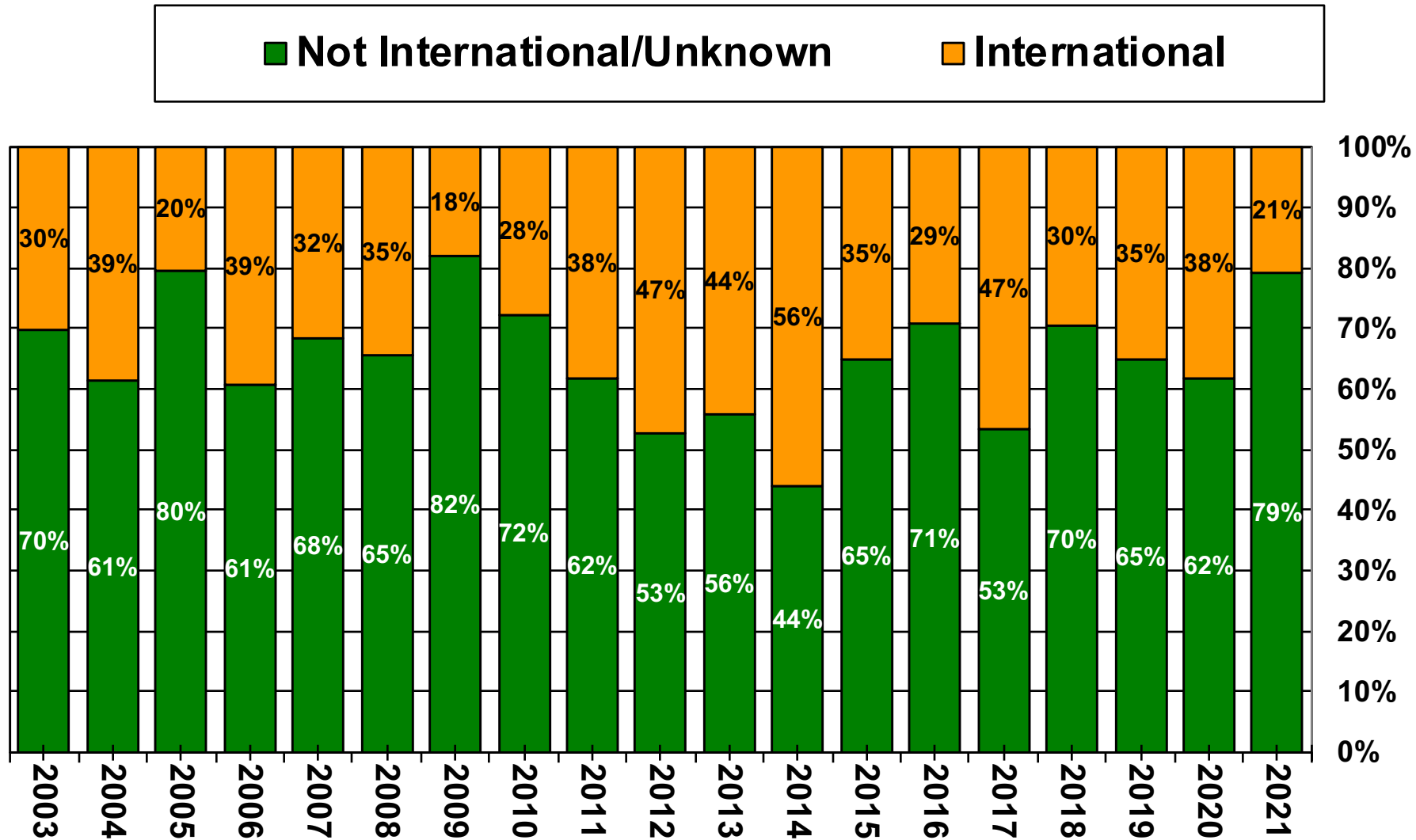
Data drawn from UCPath (2019-21) is missing some citizenship status data.

UCB New Faculty Headcount by International Status, AY 2003-04—2021-22*



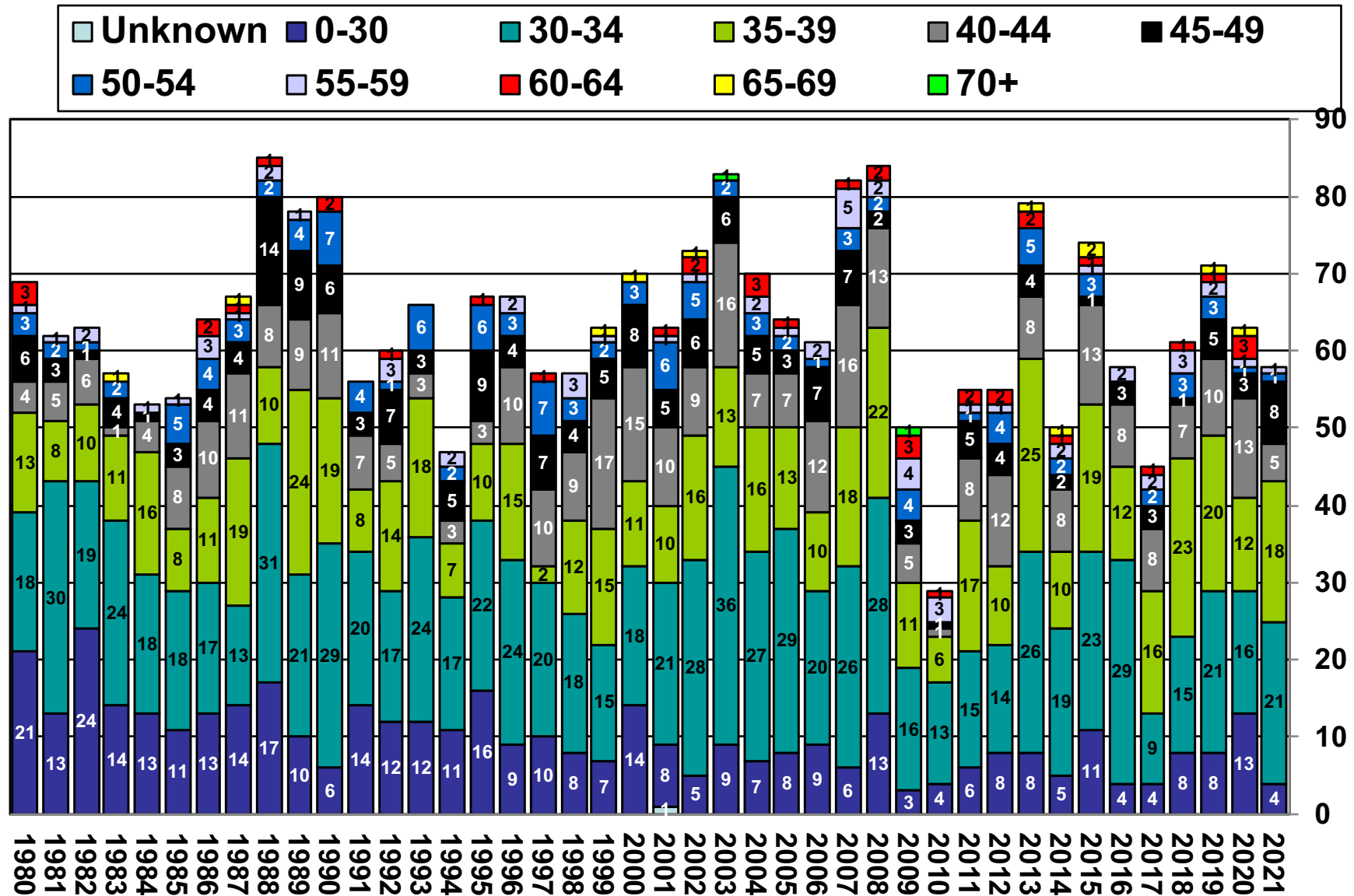
*2021-22 is preliminary, as of August 17, 2021.
Data drawn from UCPath (2019-21) is missing some citizenship status data.

UCB New Faculty Headcount by International Status, AY 2003-04—2021-22*



*2021-22 is preliminary, as of August 17, 2021.
Data drawn from UCPath (2019-21) is missing some citizenship status data.

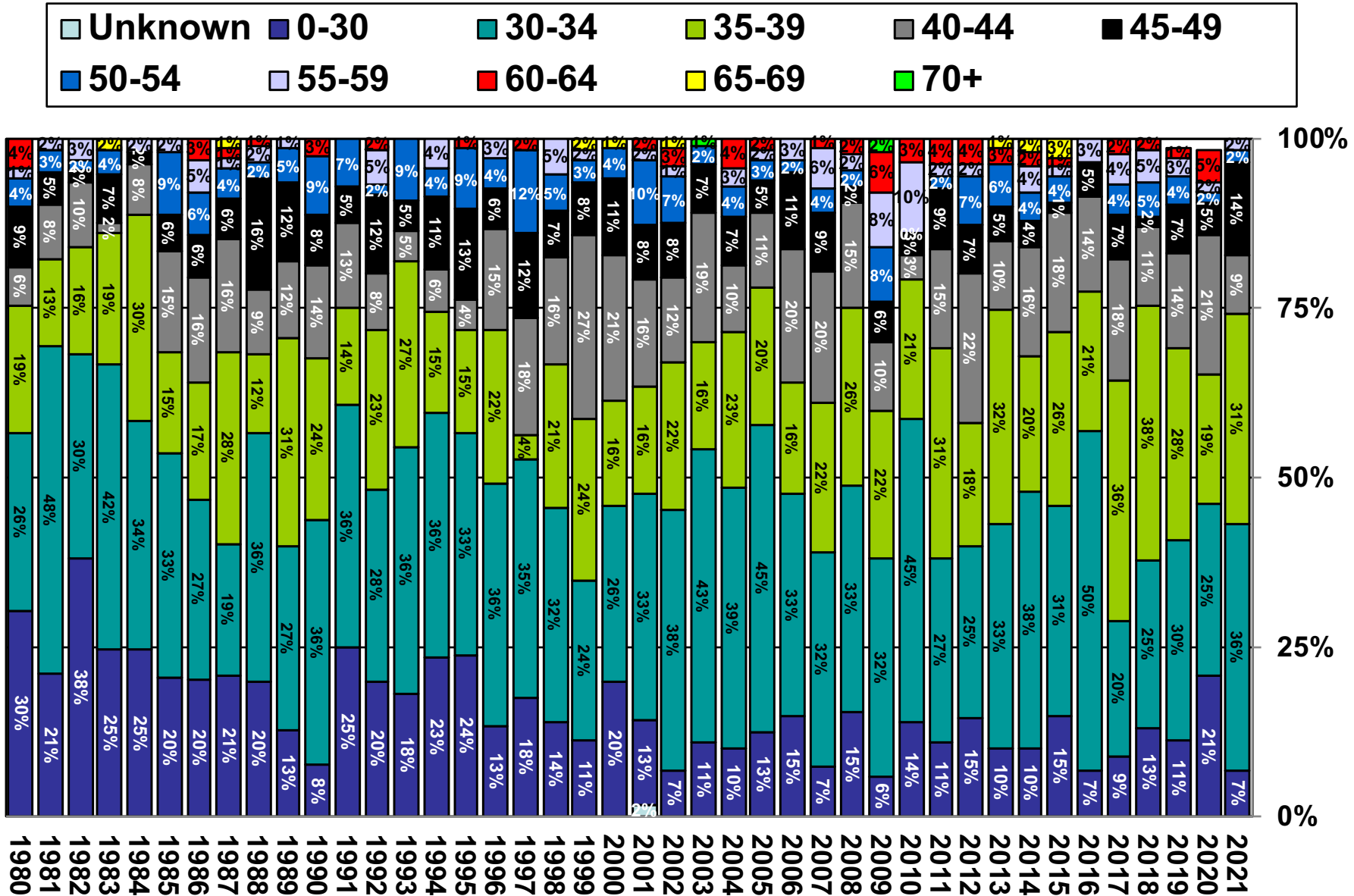
UC Berkeley New Faculty Headcount by Age Categories, AY 1980-81—2021-22*



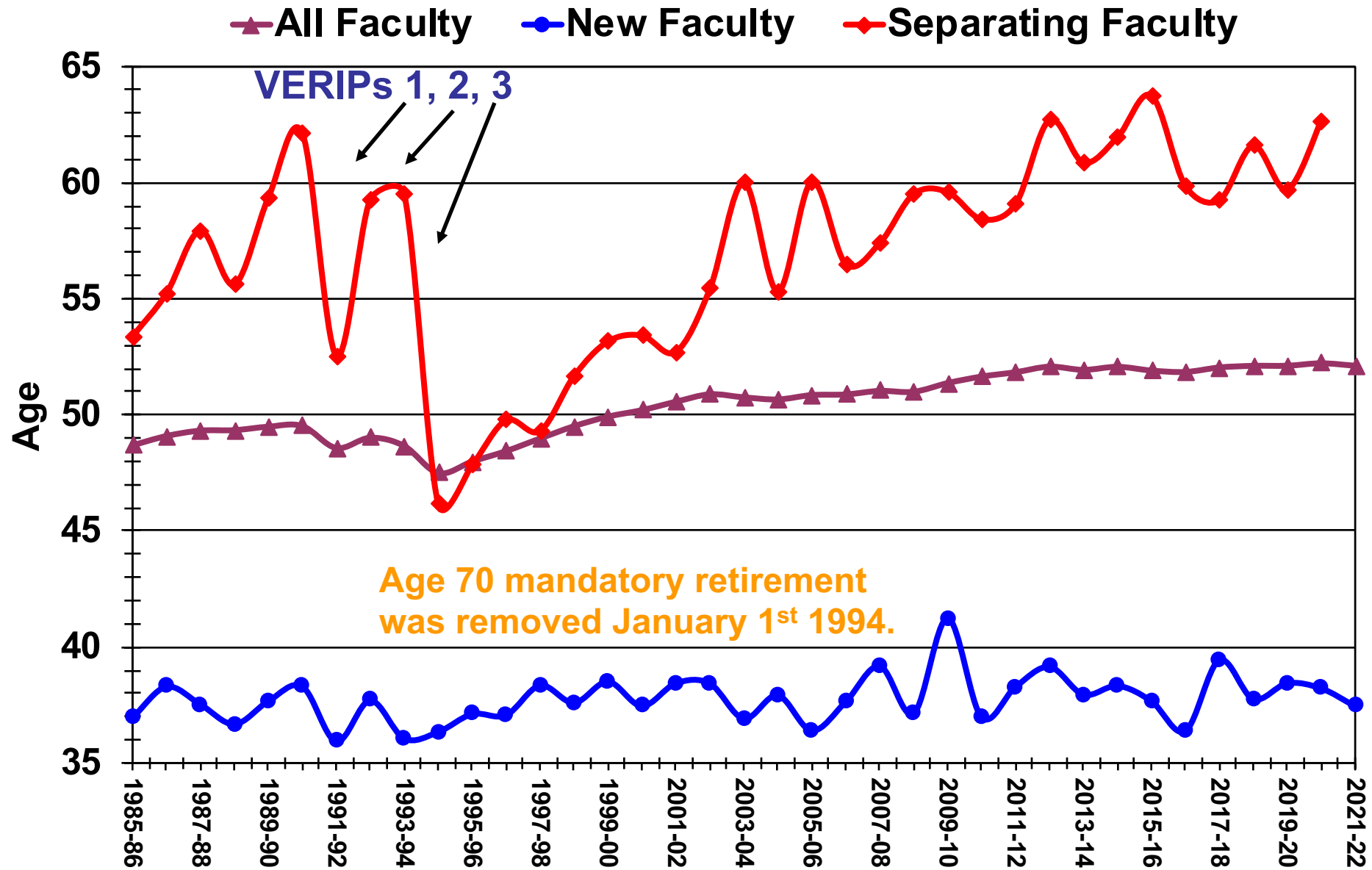
Source: UCB Faculty Personnel Records, AY1980-81—2021-22.

*2021-22 is preliminary, as of August 17, 2021.

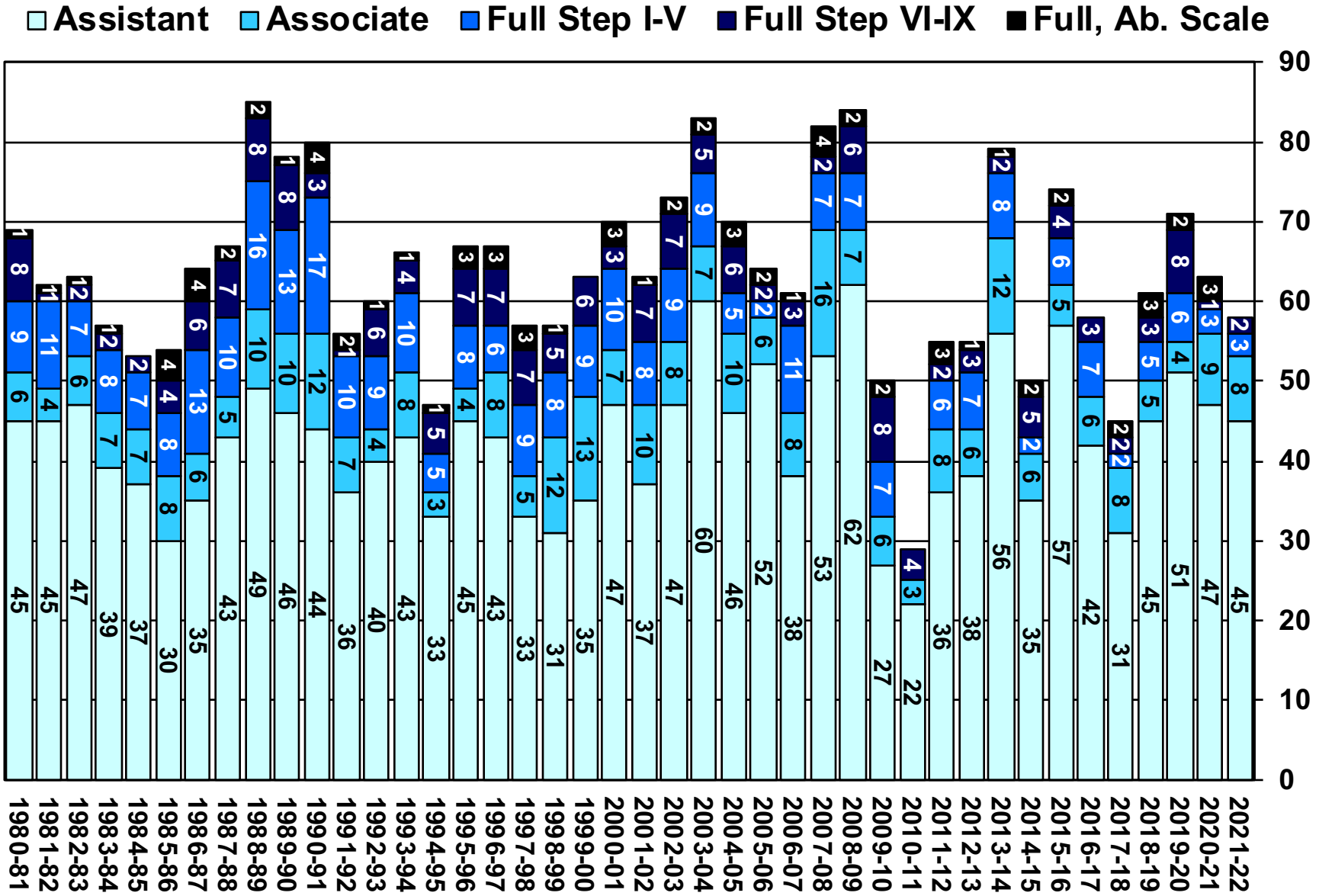
UC Berkeley New Faculty Headcount by Age Categories, AY 1980-81—2021-22*



Mean Age of UC Berkeley Faculty, 1985-86—2021-22*



UC Berkeley New Faculty Headcount by Rank/Step, AY 1980-81—2021-22*



UC Berkeley New Faculty Headcount by Rank/Step, AY 1980-81—2021-22*

■ Assistant
 ■ Associate
 ■ Full Step I-V
 ■ Full Step VI-IX
 ■ Full, Ab. Scale

