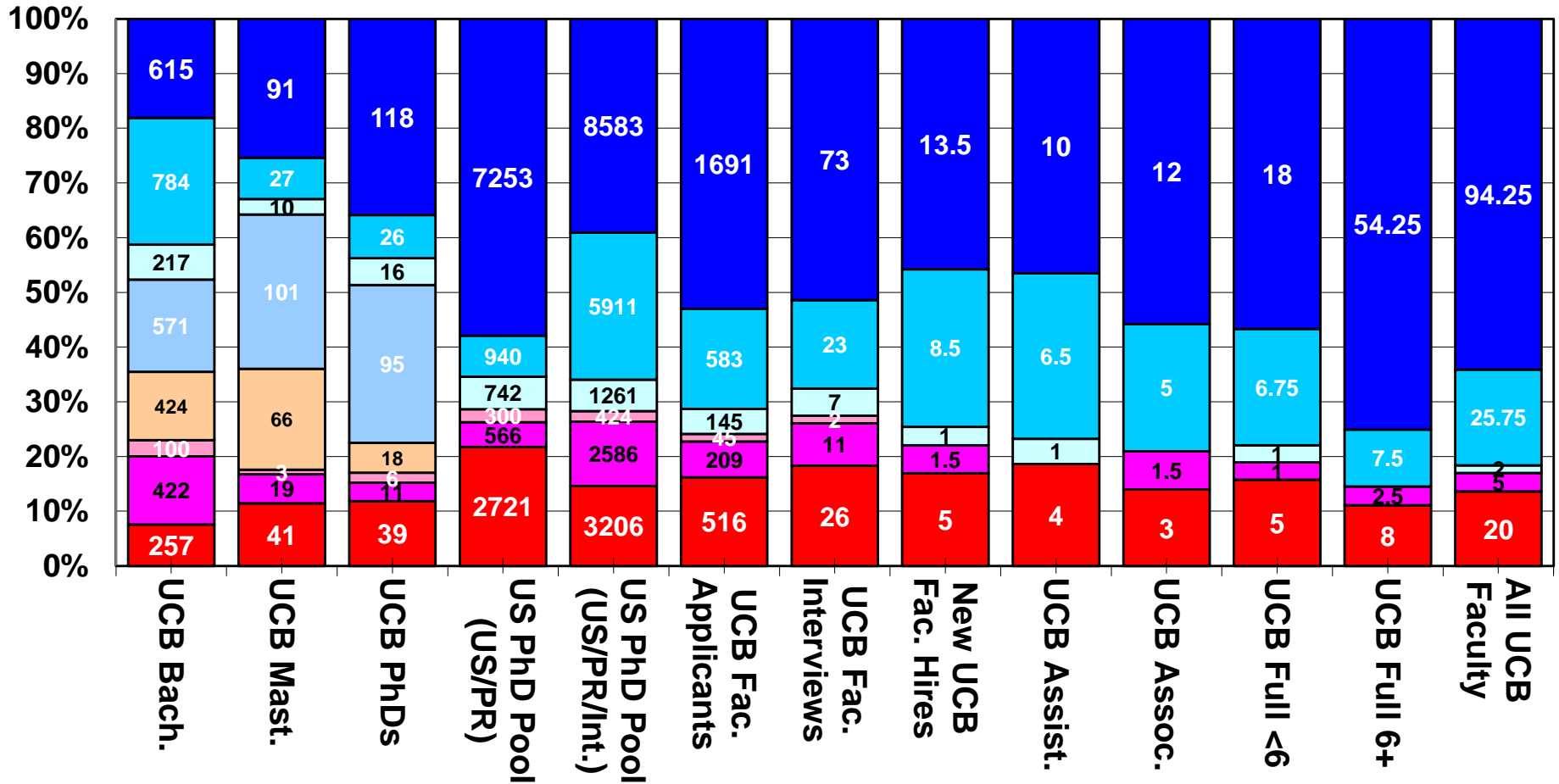
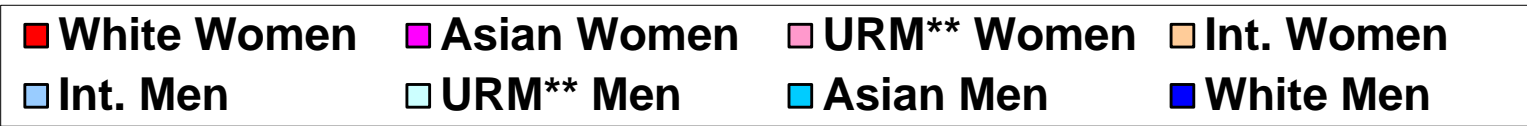


UCB L&S Div of Physical Sciences

Equity Benchmarks

**Prepared by Office for Faculty Equity & Welfare
September 2019**

UCB L&S Div of Physical Sciences, Diversity Pipeline*, AY2018-19

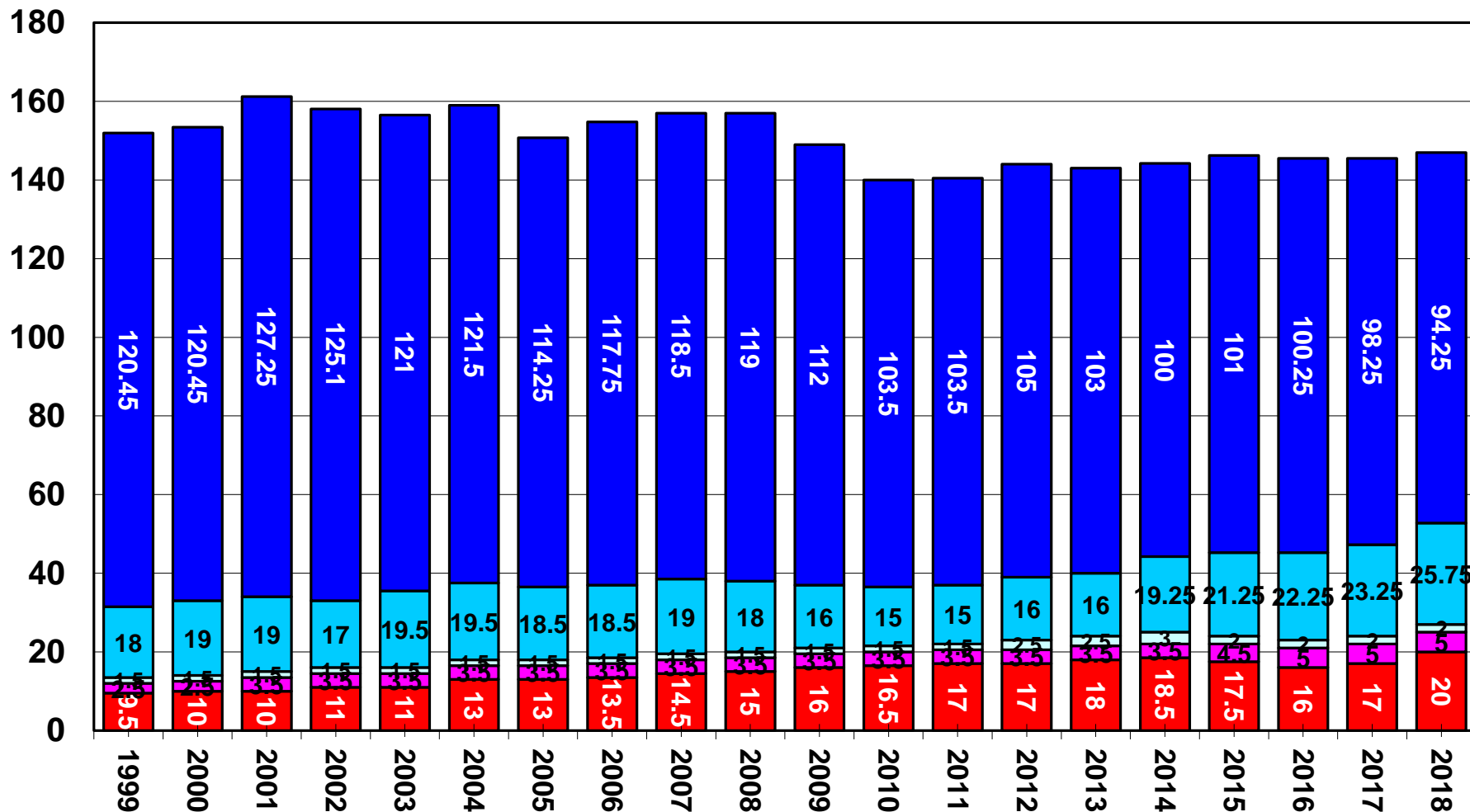


Sources: UCB Degree File, 2013-14--2017-18; Survey of Earned Doctorates (All US PhDs, 2013-17); UCB APRecruit, AY 2012-13—2018-19; Faculty Personnel Records, AY2014-15—2018-19 (Spring). Faculty FTE data as of 4/30/2019.

*All data (degrees, pool, & faculty FTE) are cut to dean level. UCB degree data does not supply race/ethn. for Int. students. Unknown gender/race/ethn. are excluded from pool/applicant analysis. Includes multiple appointments and part-time faculty.

**URM=African Am./African/Black, Native American, & Hispanic.

UCB Faculty L&S Div of Physical Sciences*, AY1999-00--2018-19



Sources: UCB Faculty Personnel Records, AY1999-00--2018-19.
Faculty FTE data as of 4/30/2019.

*Includes multiple appointment & part-time faculty.

**URM=African American, Native American, & Hispanic.